

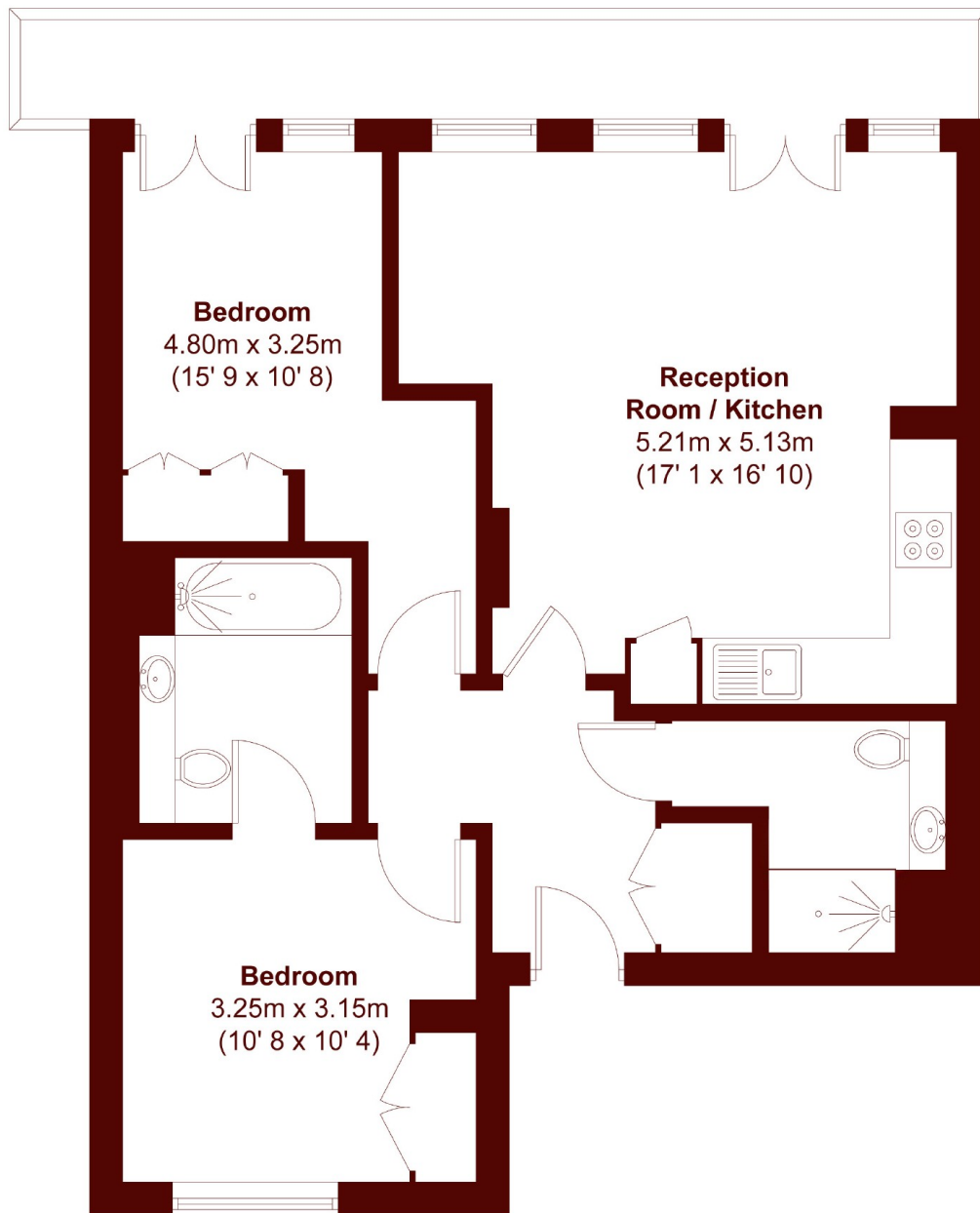


## Trematon Walk, N1

£650,000



- Modern Apartment
- Prime Location
- Excellent Transport Links
- Private Terrace
- Two Bedrooms
- Two Bathrooms



APPROX. GROSS INTERNAL FLOOR AREA = 687 SQFT / 63.8 SQM

## Marsh & Parsons Camden

27 Parkway, London, NW1  
7PN  
020 7244 2200