

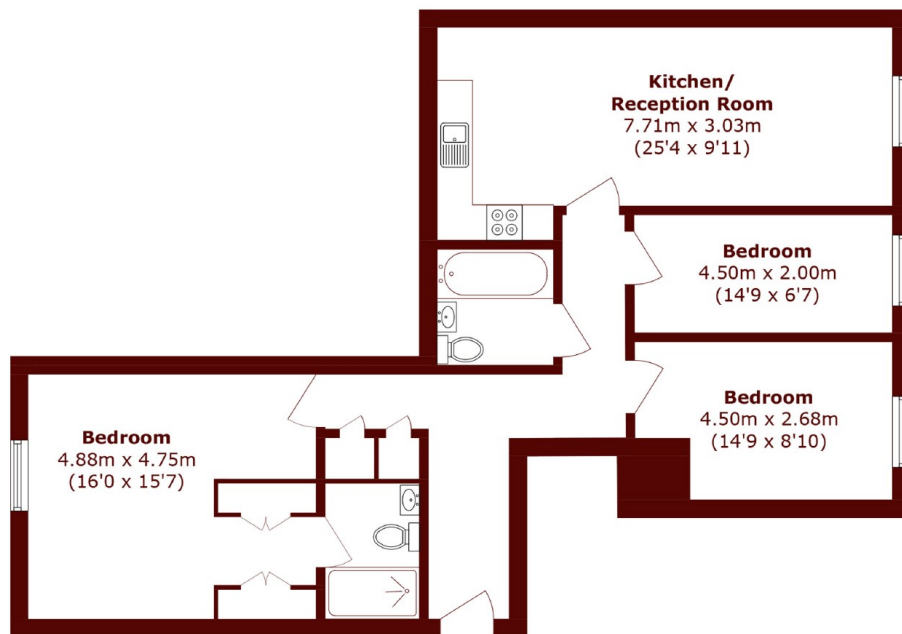


Lock House, NW1

£900,000

3 2 1 B

- Central Location
- Underground Parking
- Three Double Bedrooms
- Modern Design
- Two Bathrooms
- Residents Gym



Total area (approx.): 90.7 sq. m (976.3 sq. ft)

Marsh & Parsons Camden

27 Parkway, London, NW1
7PN
020 7244 2200