

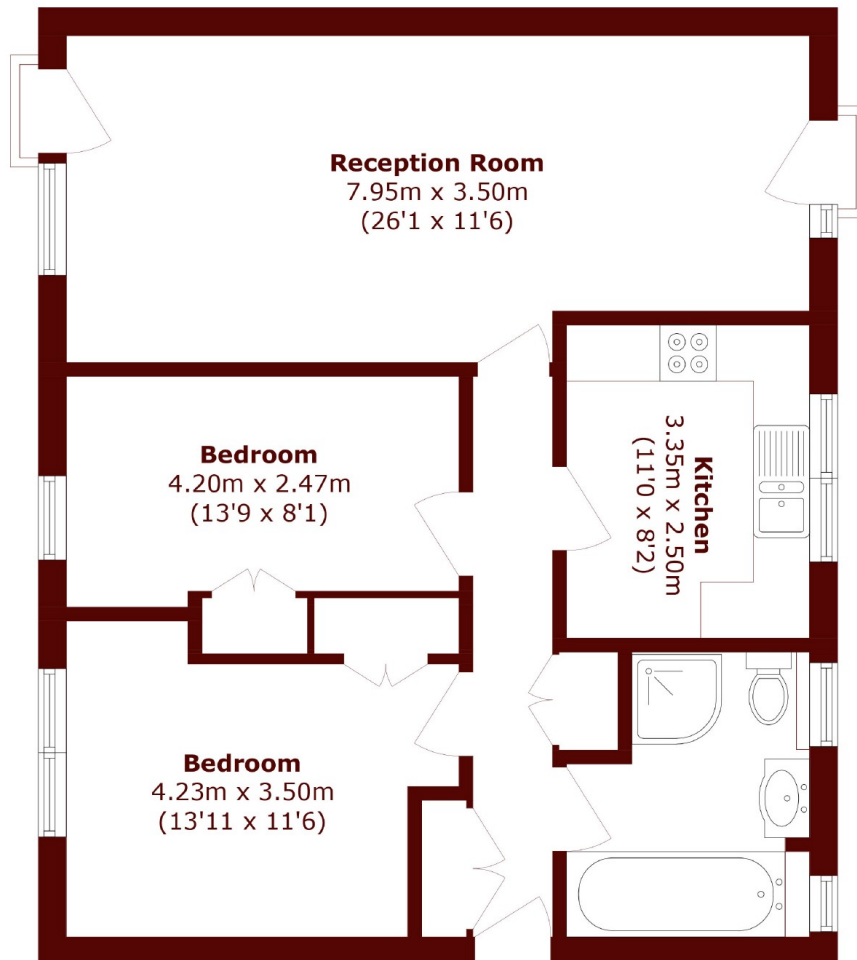


Chester Close South, NW1

£800,000



- Two Bedrooms
- Moments From Regents Park
- Underground Parking
- Concierge
- No Chain
- Garage



Total area (approx.): 76.7 sq. m (825.5 sq. ft)

Marsh & Parsons Marsh & Parsons

27 Parkway, London, NW1
7PN
020 7244 2200