



Albert Street, NW1

£750,000



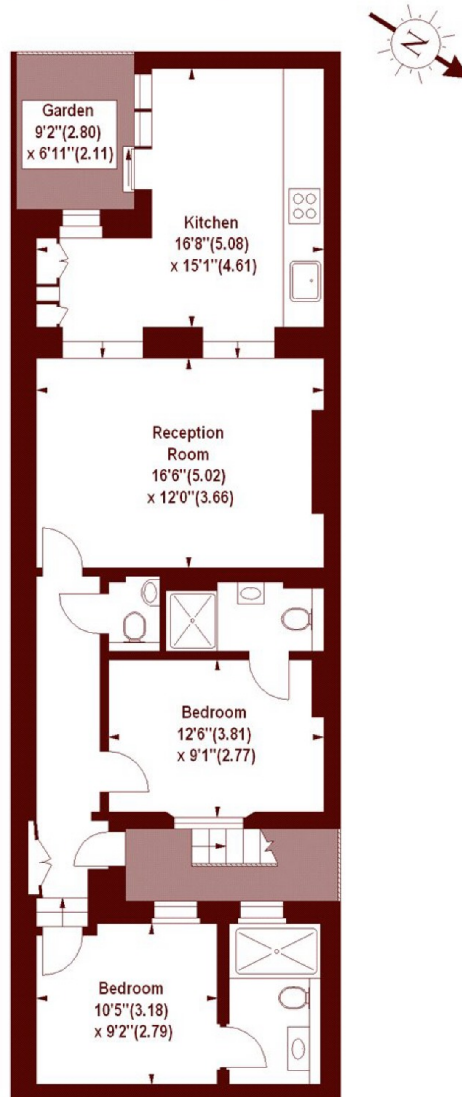
- Two Double Bedrooms
- Two Bathrooms

- Long Lease
- Grade II Listed

- Permit Parking
- No Chain

Albert Street, NW1

APPROX. GROSS INTERNAL FLOOR AREA 812 SQFT / 75.43 SQM



LOWER GROUND FLOOR

The floor plan is not to scale and measurements and areas shown are approximate and therefore should be used for illustrative purposes only.

The plan has been prepared in accordance with the RICS code of Measuring Practice and whilst we have confidence in the information produced, it must not be relied on.

If there is any aspect of particular importance, you should carry out or commission your own inspection of the property.

Copyright of FeaturePRO.

Marsh & Parsons Marsh & Parsons

27 Parkway, London, NW1

7PN

020 7244 2200