



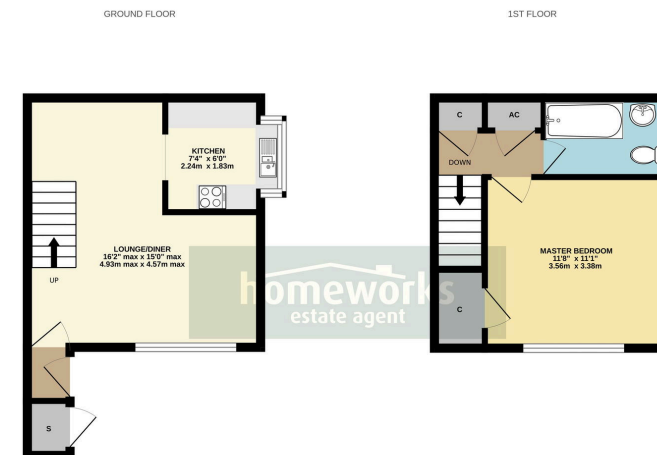
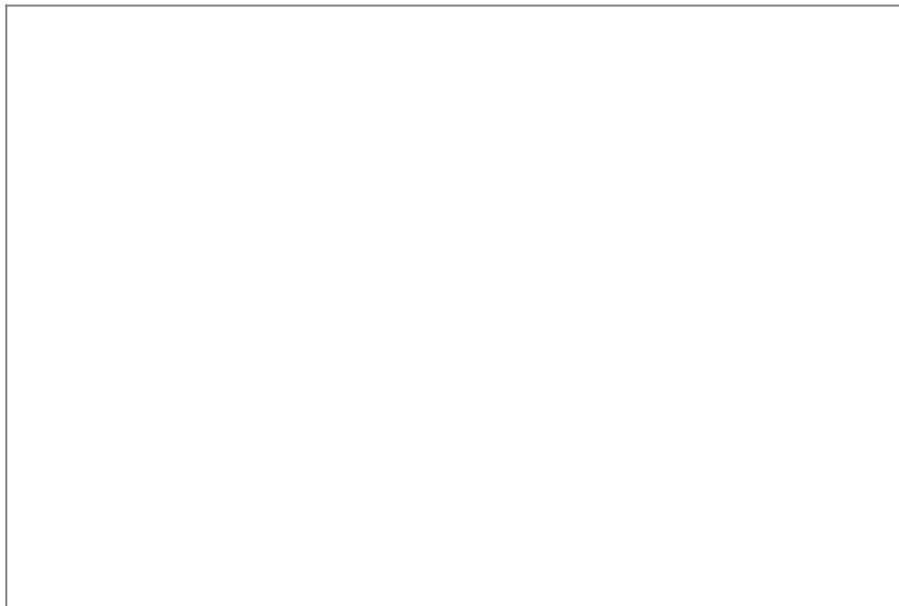
10 Hillfields,
£135,000

1 1 1



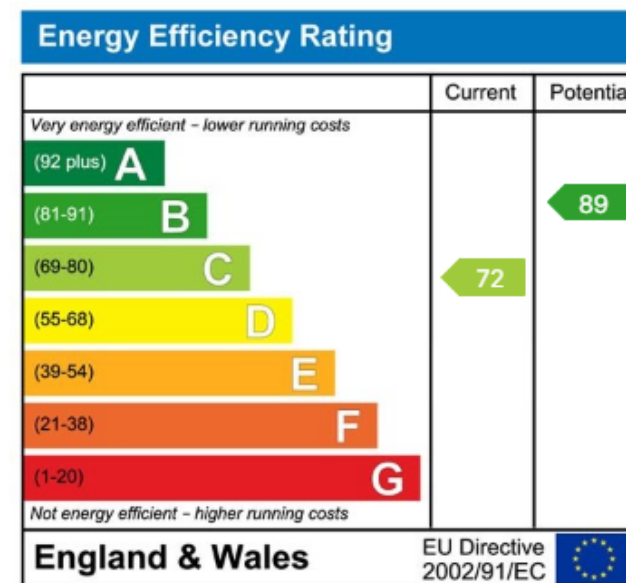
- ** CALLING ALL FIRST TIME BUEYRS AND INVESTORS **
- ONE DOUBLE BEDROOM
- RE FITTED KITCHEN & BATHROOM
- ALLOCATED PARKING SPACE
- ** CALL TODAY TO ARANGE YOUR VIEWING **
- WELL-PRESENTED CLUSTER HOME
- 16'2 LOUNGE/DINER
- LARGE ENCLOSED GARDEN
- POPULAR RESIDENTAL LOCATION





Whilst every attempt has been made to ensure the accuracy of the floorplan contained here, measurements of doors, windows, rooms and any other items are approximate and no responsibility is taken for any error or omission in this document. This plan is for illustrative purposes only and should not be used as a basis for any prospective purchase. The services, systems and appliances shown here are not intended and no guarantee as to their operation or efficiency can be given. Made with Metagaze G2024

**** CALLING ALL FIRST TIME BUYERS AND INVESTORS **** |
WELL-PRESENTED CLUSTER HOME | ONE DOUBLE BEDROOM |
16'2 LOUNGE/DINER | RE FITTED KITCHEN & BATHROOM |
LARGE ENCLOSED GARDEN | ALLOCATED PARKING SPACE |
POPULAR RESIDENTIAL LOCATION | **** CALL TODAY TO
ARRANGE YOUR VIEWING ****



C AMOS MNAEA Managing Director
VAT no. 185 328 683

zoopla

rightmove

Homeworks (Dereham) Ltd. Registration Number (08951563) incorporated in England. Registered Office: 45a Norwich Road, Dereham, Norfolk, England, NR20 3AS