



homeworks
estate agent



54 Swaffham Road
Dereham, NR19 2DL

☎ (01362) 65 44 44
✉ sales@homeworks-uk.com
🌐 www.homeworks-uk.com

Fakenham Road, Beetley, Dereham, NR20

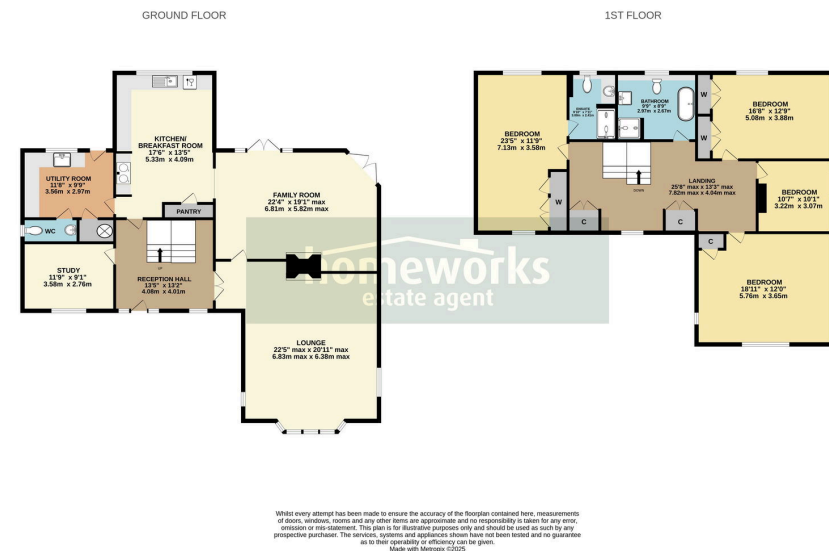
£650,000

🛏 4 🚿 3 🛋 3



- * INDIVIDUALLY BUILT LARGE DETACHED FAMILY HOME IN SOUGHT AFTER LOCATION
- NO ONWARD CHAIN
- FOUR DOUBLE BED ROOMS
- EN-SUITE TO 23'5 MASTER
- THREE GENEROUS RECEPTIONS ROOMS
- 17'6 KITCHEN / BREAKFAST ROOM
- 13'5 RECEPTION HALL & 25'8 LANDING
- PRIVATE GARDEN
- LARGE DRIVE WITH AMPLE ROOM FOR GARAGE/ CARTSHED (STPP)
- EARLY VIEWING ADVISED IS STRONGLY ADVISED





*** INDIVIDUALLY BUILT LARGE DETACHED FAMILY HOME IN SOUGHT AFTER VILLAGE LOCATION * FOUR DOUBLE BEDROOMS | EN-SUITE TO MASTER | THREE GENEROUS RECEPTIONS ROOMS | 17'6 KITCHEN / BREAKFAST ROOM | 13'5 RECEPTION HALL & 25'8 LANDING | PRIVATE GARDEN | NO ONWARD CHAIN | VIEWING ADVISED!**



C AMOS MNAEA Managing Director
VAT no. 185 328 683



Homeworks (Dereham) Ltd. Registration Number (08951563) incorporated in England. Registered Office: 45a Norwich Road, Dereham, Norfolk, England, NR20 3AS