



Wright Drive, Scarning, Dereham, NR19 2TS

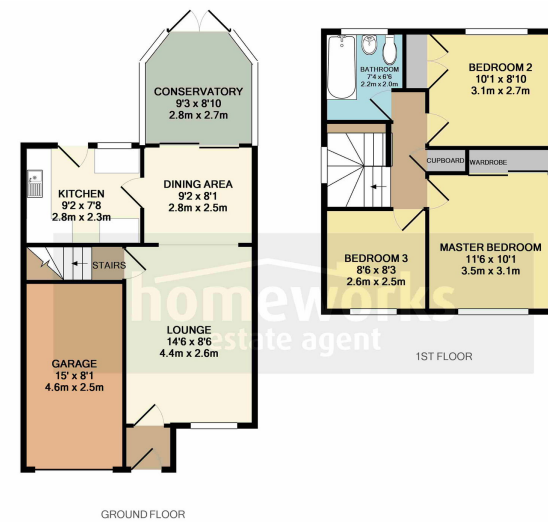
Guide Price £225,000

3 1 1



- SEMI-DETACHED HOUSE IN A POPULAR LOCATION
- 14'6 LOUNGE
- 9'3 CONSERVATORY
- DRIVEWAY PARKING & GARAGE
- CLOSE TO LOCAL SCHOOLS & AMENITIES
- THREE DOUBLE BEDROOMS
- 9'2 KITCHEN WITH SEPARATE DINING AREA
- FAMILY BATHROOM OFF-LANDING
- ENCLOSED REAR GARDEN
- CALL NOW TO ARRANGE YOUR VIEWING!





Whilst every attempt has been made to ensure the accuracy of the floor plan contained here, measurements of doors, windows, rooms and any other items are approximate and no responsibility is taken for any error, omission or mis-statement. This plan is for illustrative purposes only and should be used as such by any prospective purchaser. The services, systems and appliances shown have not been tested and no guarantee as to their operability or efficiency can be given.

Made with Metropix ©2018

SITUATED ON THE EVER POPULAR SCARNING DEVELOPMENT IS THIS THREE DOUBLE BEDROOM SEMI-DETACHED HOME. THE ACCOMMODATION COMPRISES OF A 14'6 LOUNGE | 9'2 KITCHEN WITH SEPARATE DINING AREA | 9'3 CONSERVATORY | FAMILY BATHROOM OFF-LANDING | ENCLOSED REAR GARDEN | DRIVEWAY & GARAGE | CLOSE TO LOCAL SCHOOLS & AMENITIES! CALL TODAY. £225,000 to £250,000



C AMOS MNAEA Managing Director
VAT no. 185 328 683

zoopla

rightmove

Homeworks (Dereham) Ltd. Registration Number (08951563) incorporated in England. Registered Office: 45a Norwich Road, Dereham, Norfolk, England, NR20 3AS