



homeworks
estate agent



54 Swaffham Road
Dereham, NR19 2DL

☎ (01362) 65 44 44
✉ sales@homeworks-uk.com
🌐 www.homeworks-uk.com

Middlemarch Road, Dereham, NR19 1EL

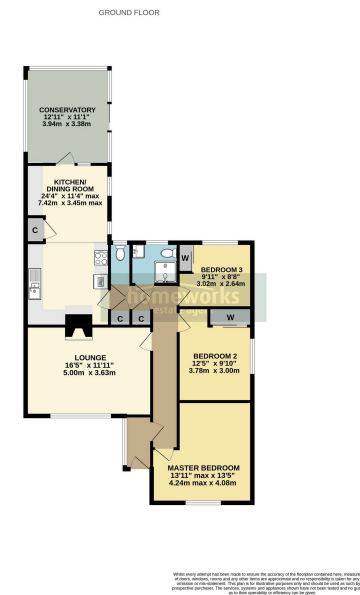
Guide Price £325,000

3 1 2

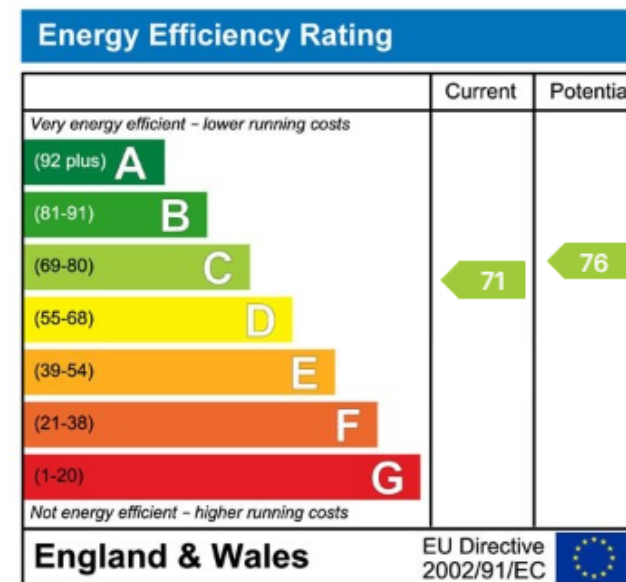


- AN EXTENDED & WELL-PRESENTED DETACHED BUNGALOW
- 16'5 LOUNGE & 12'11 CONSERVATORY
- SHOWER ROOM PLUS SEPARATE ADDITIONAL W.C.
- ENCLOSED REAR GARDEN
- LOCATED CLOSE TO AMENITIES & BUS ROUTES
- THREE DOUBLE BEDROOMS
- 24'4 KITCHEN/DINING ROOM
- DRIVEWAY & GARAGE
- SOLAR PANELS
- ** GUIDE PRICE £325,000 - £350,000 **





AN EXTENDED & WELL-PRESENTED DETACHED BUNGALOW SITUATED IN SOUTH AFTER LOCATION. EASY REACH OF AMENITIES & BUS ROUTES, THIS PROPERTY OFFERS THREE BEDROOMS, AN IMPRESSIVE 24'4 KITCHEN/DINER, 16'5 LOUNGE & 12'11 CONSERVATORY WHICH OVERLOOKS THE REAR GARDEN. THERE IS A MODERN SHOWER ROOM PLUS AN ADDITIONAL W.C. ADDING EXTRA CONVENIENCE, A GENEROUS DRIVEWAY & GARAGE. CALL NOW. ** GUIDE PRICE £325,000 - £350,000 **



C AMOS MNAEA Managing Director
 VAT no. 185 328 683

