





George Borrow Road, Dereham, NR19 1HH

£300,000

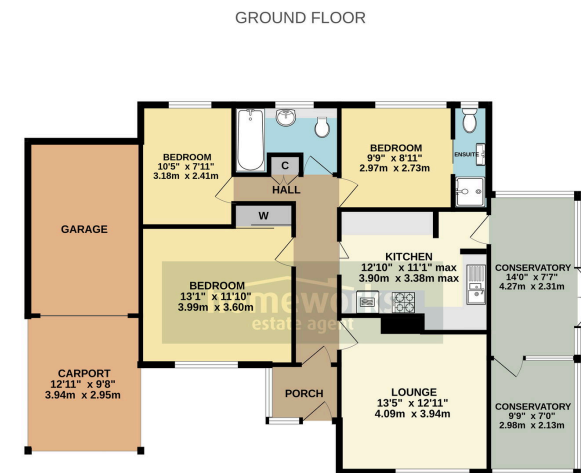
3 2 1





- DETACHED BUNGALOW OCCUPYING A CORNER PLOT
- 13'5 LOUNGE
- TWO CONSERVATORIES
- FAMILY BATHROOM
- ENCLOSED & PRIVATE REAR GARDEN
- THREE BEDROOMS
- 12'10 KITCHEN
- MASTER BEDROOM WITH EN-SUITE SHOWER ROOM
- GENEROUS DRIVEWAY, CARPORT & GARAGE
- EARLY VIEWING IS RECOMMENDED





While every attempt has been made to ensure the accuracy of the description contained herein, measurements of these various items and any other items are approximate and no responsibility is taken for any error, omission or misstatement. The plan is for the proposed property only and should not be used for any other purpose. The services, systems and fixtures shown have been taken from the best available information and no guarantee is made as to their accuracy or efficiency and no guarantee is made as to their condition.

A THREE BEDROOM DETACHED BUNGALOW OCCUPYING A CORNER PLOT. WITH 13'5 LOUNGE | 12'10 KITCHEN | TWO CONSERVATORIES | EN-SUITE SHOWER ROOM | FAMILY BATHROOM | GENEROUS DRIVEWAY, CARPORT & GARAGE | ENCLOSED & PRIVATE REAR GARDEN | EARLY VIEWING IS RECOMMENDED. \* VENDOR HAS FOUND \*



C AMOS MNAEA Managing Director  
VAT no. 185 328 683

ZOOPLA

rightmove

Homeworks (Dereham) Ltd. Registration Number (08951563) incorporated in England. Registered Office: 45a Norwich Road, Dereham, Norfolk, England, NR20 3AS