







BRITISH
PROPERTY
AWARDS
2024
★★★★★
GOLD WINNER
ESTATE AGENT
IN DEREHAM


homeworks
estate agent



54 Swaffham Road
Dereham, NR19 2DL

 (01362) 65 44 44
 sales@homeworks-uk.com
 www.homeworks-uk.com

Watton Road, IP25 7PF

Guide Price £200,000

🛏 2 🚿 1 🚗 2



- IMMACULATE END-TERRACED COTTAGE
- 13'7 SITTING ROOM
- 10'9 KITCHEN
- ENCLOSED FRONT GARDEN
- IDEAL FIRST TIME BUY OR INVESTMENT
- TWO DOUBLE BEDROOMS
- SEPARATE 10'9 DINING ROOM
- FAMILY BATHROOM OFF-LANDING
- OFF ROAD PARKING FOR ONE VEHICLE AT THE FRONT OF THE PROPERTY
- ** GUIDE PRICE £200,000 - £210,000 **



homeworks
estate agent



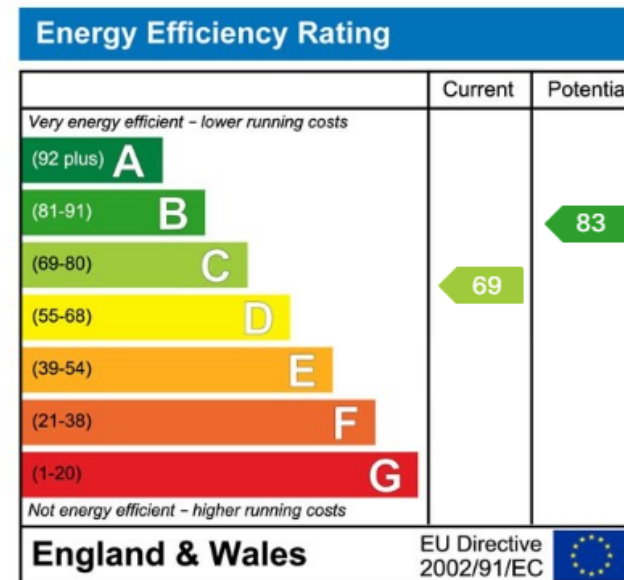
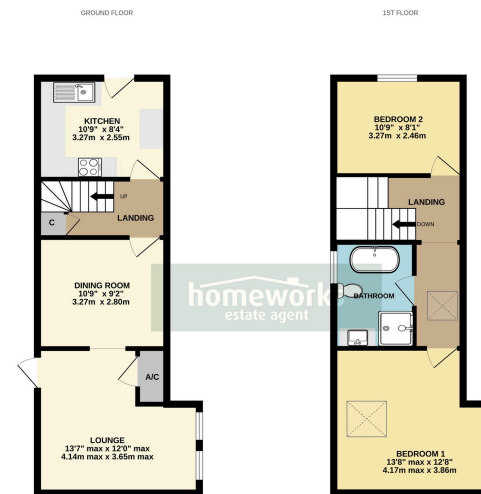
homeworks
estate agent



homeworks
estate agent



Charming and well-presented two double bedroom end-terraced cottage in the heart of Shipdham. Features two reception rooms, an 11' kitchen, family bathroom off-landing, an enclosed rear garden and off-road parking. Ideal for those seeking village life with comfort and character.



C AMOS MNAEA Managing Director
VAT no. 185 328 683

