



homeworks
estate agent



54 Swaffham Road
Dereham, NR19 2DL

☎ (01362) 65 44 44
✉ sales@homeworks-uk.com
🌐 www.homeworks-uk.com

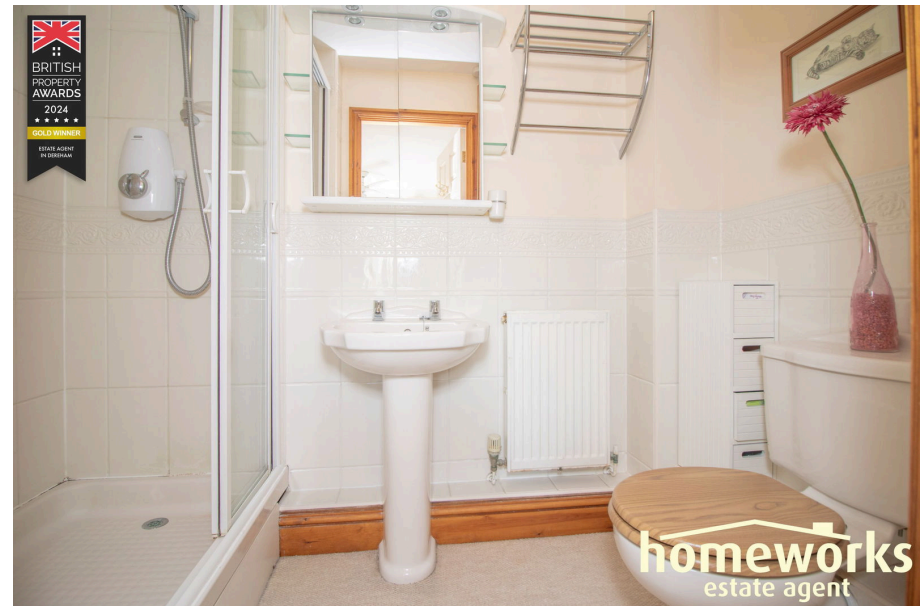
Wisteria Close, Dereham, NR20 3TD

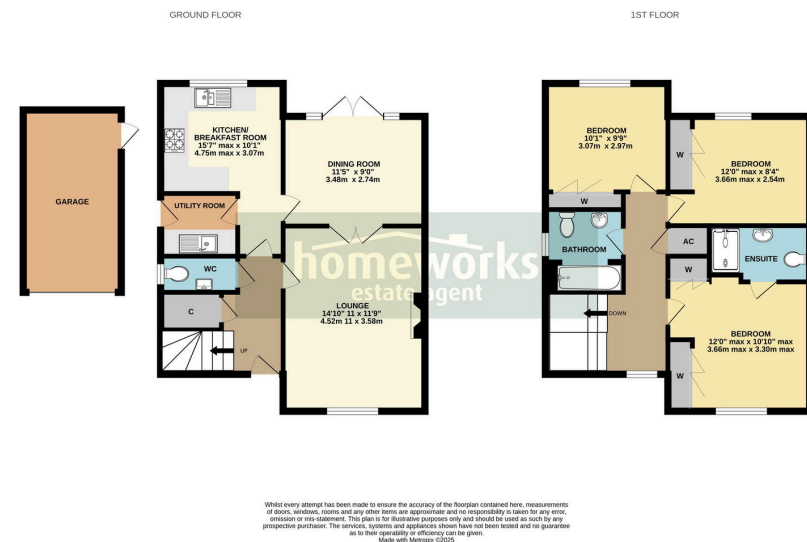
Guide Price £275,000

3 2 2



- SEMI-DETACHED HOUSE IN A SOUGHT AFTER LOCATION
- KITCHEN WITH SEPARATE UTILITY
- EN-SUITE TO MASTER BEDROOM
- GARAGE & DECENT DRIVEWAY
- VENDORS HAVE FOUND!
- THREE DOUBLE BEDROOMS
- LOUNGE & DINING ROOM
- FAMILY BATHROOM OFF-LANDING & DOWNSTAIRS CLOAKROOM
- ENCLOSED REAR GARDEN
- GUIDE PRICE £275,000 - £300,000





**** GENEROUS HOME IN A DESIRABLE LOCATION**
**** Homeworks are pleased to welcome this lovely semi-detached home to the market. With THREE DOUBLE BEDROOMS | KITCHEN / BREAKFAST ROOM WITH SEPARATE UTILITY | LOUNGE & DINING ROOM | EN-SUITE TO MASTER BEDROOM | FAMILY BATHROOM OFF-LANDING & DOWNSTAIRS CLOAKROOM | GARAGE & DECENT DRIVEWAY | ENCLOSED REAR GARDEN | VENDORS HAVE FOUND | GUIDE PRICE £275,000 - £300,000 ****



C AMOS MNAEA Managing Director
 VAT no. 185 328 683



Homeworks (Dereham) Ltd. Registration Number (08951563) incorporated in England. Registered Office: 45a Norwich Road, Dereham, Norfolk, England, NR20 3AS