



BRITISH
PROPERTY
AWARDS

2024

★★★★★

GOLD WINNER

ESTATE AGENT
IN DEREHAM



homeworks
estate agent



54 Swaffham Road
Dereham, NR19 2DL

☎ (01362) 65 44 44
✉ sales@homeworks-uk.com
🌐 www.homeworks-uk.com

Spinney Close, Beetley, Dereham, NR20 4TB

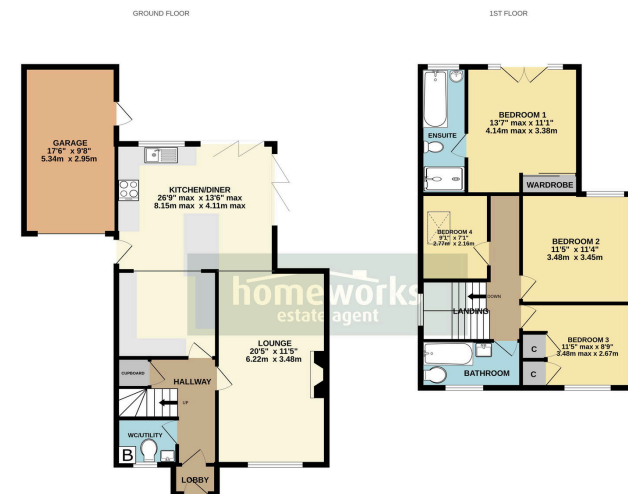
Offers Over £349,950

🛏 4 🚿 2 🚗 2

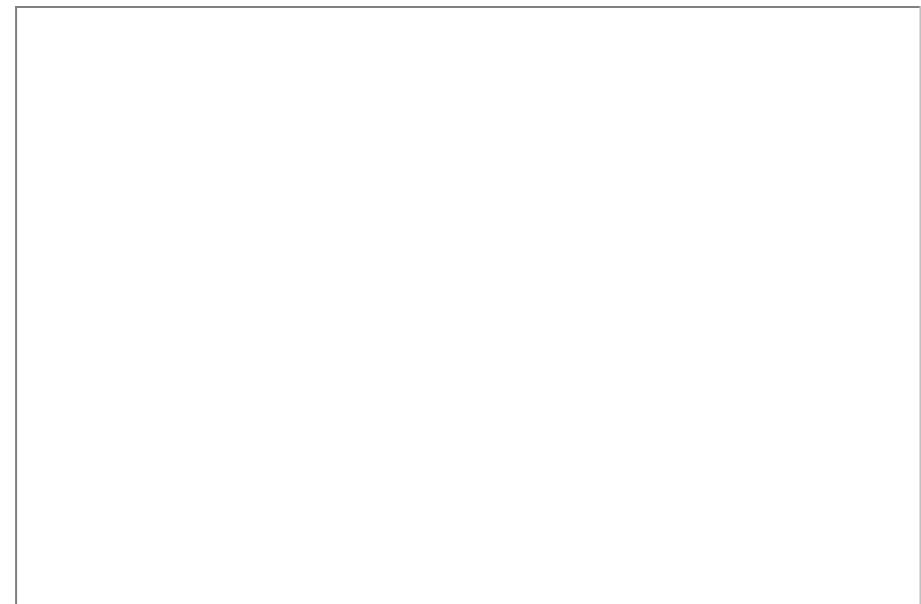


- ** NO ONWARD CHAIN **
- FOUR BEDROOMS
- 26'9 KITCHEN/DINER
PERFECT FOR
ENTERTAINING
- ENCLOSED & TREE LINED
GARDEN
- POPULAR VILLAGE
LOCATION
- EXTENDED & DETACHED
FAMILY HOME
- FAMILY BATHROOM, EN
SUITE TO MASTER &
DOWNSTAIRS W.C.
- 20'5 LOUNGE
- 17'6 GARAGE & OFF ROAD
PARKING
- INTERNAL VIEWING HIGHLY
RECOMMENDED





This extended four bedroom detached home in Beetley offers spacious living with a 26'9 kitchen/diner, 20'5 lounge and a master bedroom with en-suite. Set in a tree-lined garden with a 17'6 garage and off-road parking, the property is located in a popular village, ideal for family living.



C AMOS MNAEA Managing Director
VAT no. 185 328 683

