

BRITISH
PROPERTY
AWARDS
2024
★★★★★
GOLD WINNER




ESTATE AGENT
IN DEREHAM



homeworks
estate agent



54 Swaffham Road
Dereham, NR19 2DL

 (01362) 65 44 44
 sales@homeworks-uk.com
 www.homeworks-uk.com

Ashley Road, Beetley, NR20

Offers In Region Of £400,000

3 3 3

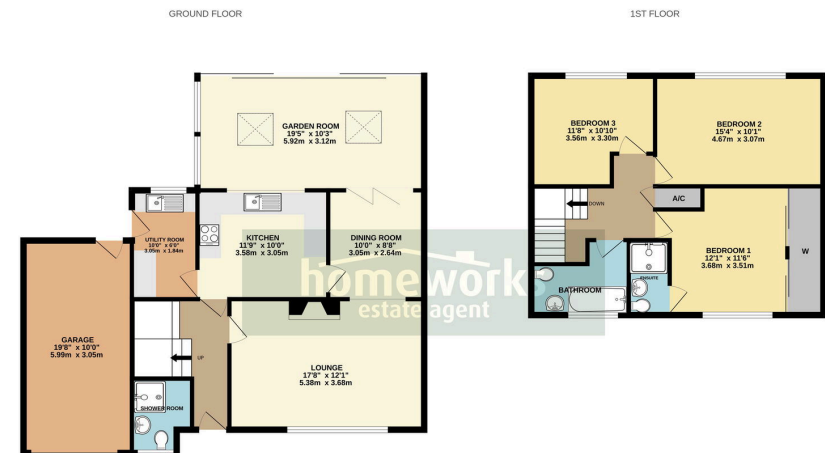


- ** IMMACULATE FAMILY HOME **
- DETACHED HOUSE
- THREE DOUBLE BEDROOMS
- 17'8 LOUNGE
- 19'5 GARDEN ROOM
- DOWNSTAIRS SHOWER ROOM, FAMILY BATHROOM & EN-SUITE TO MASTER
- ENCLOSED & TREE LINED REAR GARDEN
- 19'8 GARAGE & OFF ROAD PARKING
- CUL-DE-SAC LOCATION - RARELY AVAILABLE!
- ** CALL TODAY TO ARRANGE YOUR VIEWING **

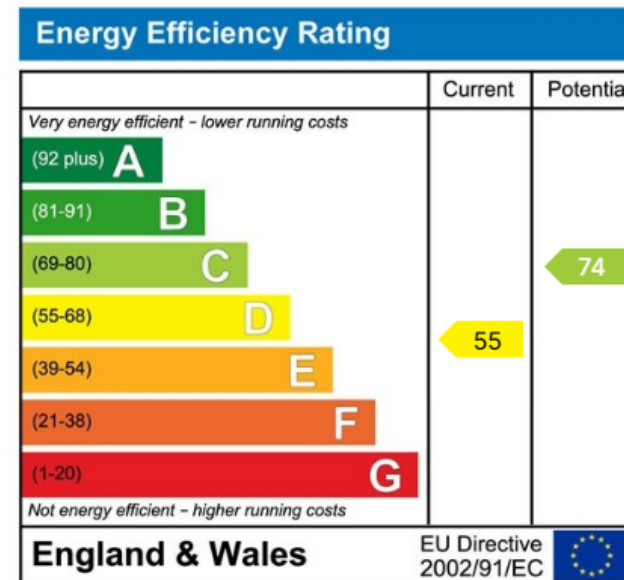




A spacious three-bedroom detached home sold with no onward chain. Features include a large lounge with fireplace, dining room, garden room, kitchen, utility, ensuite to main bedroom, downstairs shower room, and family bathroom. Outside offers a generous garage, driveway parking, and a beautiful & tree lined rear garden. Oil central heating & uPVC double glazing. Call now to view!



Whilst every effort has been made to ensure the accuracy of the description contained herein, measurements of doors, windows, rooms and any other items are approximate and no responsibility is taken for any error, omission or misstatement. This plan is for guidance purposes only and should be used as such by any prospective purchaser. The services, systems and appliances shown have not been tested and no guarantee as to their operability or efficiency can be given.
Made with Metreplan C025



C AMOS MNAEA Managing Director
VAT no. 185 328 683

