



Hornbeam Drive, Dereham, NR20 3FQ

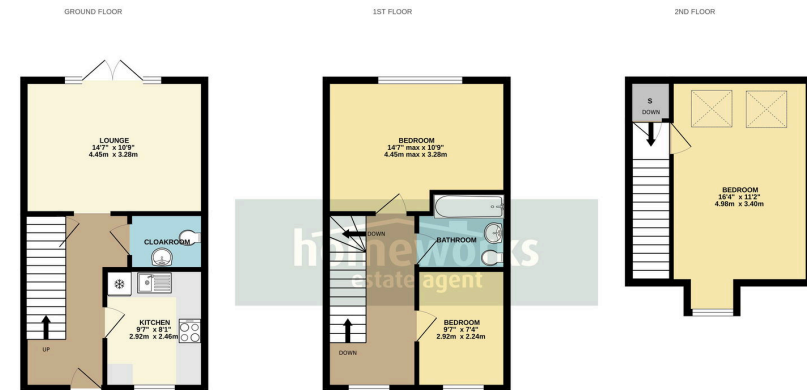
£270,000

3 1 1



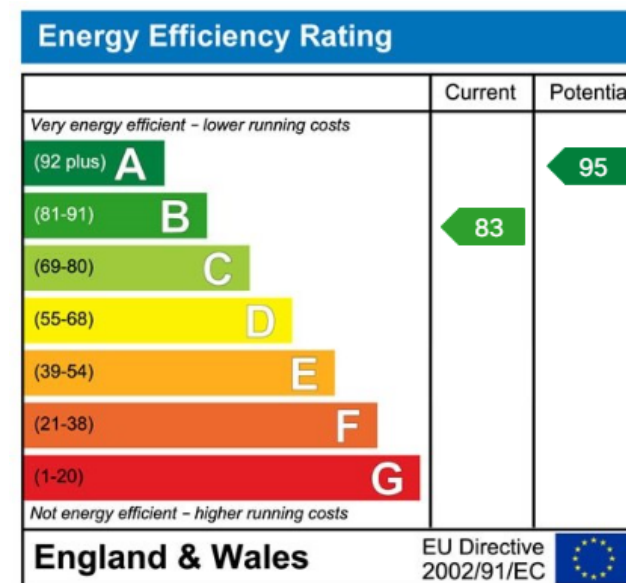
- **** NO ONWARD CHAIN ****
- **THREE BEDROOMS**
- **16'4 MASTER BEDROOM**
- **DRIVEWAY PARKING**
- **SIZABLE ENCLOSED REAR GARDEN**
- **SEMI DETACHED TOWN HOUSE**
- **14'7 LOUNGE**
- **FAMILY BATHROOM & SEPARATE CLOAKROOM**
- **IMMACULATE CONDITION THROUGHOUT**
- **** CALL TODAY TO AVOID MISSING OUT ****





Whilst every attempt has been made to ensure the accuracy of the floorplan contained here, measurements of rooms, windows, doors and any other items are approximate and no responsibility is taken for any error, omission or misstatement. This plan is for illustrative purposes only and should be used as such by any prospective purchaser. The services, systems and appliances shown have not been tested and no guarantee as to their operability or efficiency can be given.
Made with Metrepro (2020)

Homeworks are proud to present this fantastic three bedroom detached home on the sought-after Etling Grove development in Dereham. This modern property is being sold CHAIN FREE, making it an excellent opportunity for buyers looking for a hassle-free move.



C AMOS MNAEA Managing Director
VAT no. 185 328 683

