



Plot 8

Harvest Close South Petherton, TA13 5FL

GeorgeJames PROPERTIES
EST. 2014

Plot 8

Harvest Close, South Petherton, TA13 5FL

Guide Price - Guide Price £525,000

Tenure – Freehold

Local Authority – Somerset Council

Summary

A brand new detached bungalow built to a high standard with high quality fixtures and fittings. The bungalow is situated within a lovely small exclusive development of just nine similar properties. Accommodation comprises three bedrooms, the principle bedroom has an en-suite shower room, a bathroom serves the other bedrooms. There is a sitting room/dining room with bi-fold doors leading to the garden, a quality fitted kitchen opens to a separate utility room. Outside there are gardens with patio area and access to a car port.

Amenities

South Petherton is a small residential country town, set in attractive surrounding countryside, and has been recently voted the second best village in the country to bring up a family. Offering a wide range of shopping facilities, a day centre, two schools, Library, inn, churches, doctor and veterinary surgeries, chemist, tennis and bowling clubs along with bus services to neighbouring towns and villages. Yeovil is circa 10 miles, Crewkerne circa 6 miles (mainline station to Waterloo) Ilminster 6 miles and the county town of Taunton 18 miles with its M5 connection at junction 25 and mainline station to Paddington.

Services

Private sewerage treatment plant and private bore hole water. Mains electricity connected. An efficient air external source heat pump provides hot water and underfloor heating.

Entrance Hall

With built in cloaks cupboards.

Sitting Room/Dining Room 19' 8" x 14' 10" (5.99m x 4.51m)

With window to the side and bi-folding doors leading to the rear garden. Double doors lead to the kitchen.

Kitchen 16' 6" x 11' 2" (5.03m x 3.40m)

With two windows to the rear, range of kitchen units with built in sink unit. Integrated appliances including fridge freezer, dishwasher, hob and oven.



Utility Room 9' 6" x 7' 10" (2.90m x 2.40m)

With window to the rear and door to the car port. Storage units, built in sink and space for washing machine and tumble dryer.

Bathroom 11' 8" x 6' 0" (3.55m x 1.82m)

With window to the side, bathroom suite comprising low level WC, wash hand basin, shower cubicle and bath.

Bedroom 1 14' 6" x 10' 6" (4.42m x 3.20m)

With window to the front.

En-Suite Shower Room

With window to the side, low level WC and wash hand basin. Shower cubicle.

Bedroom 2 11' 10" x 9' 6" (3.6m x 2.9m)

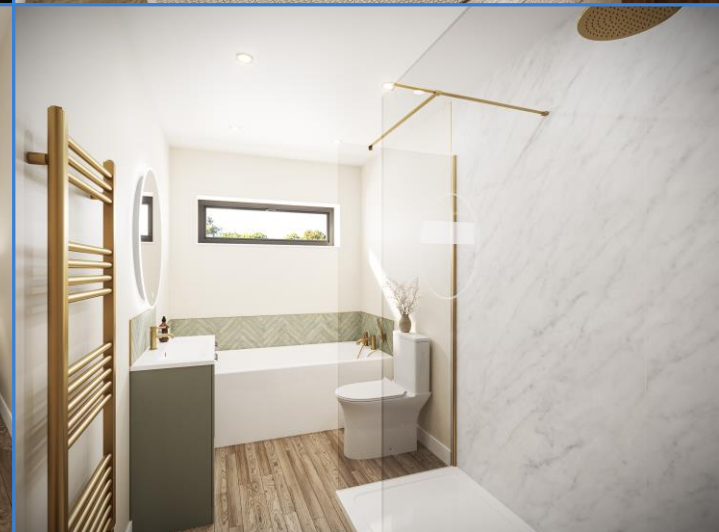
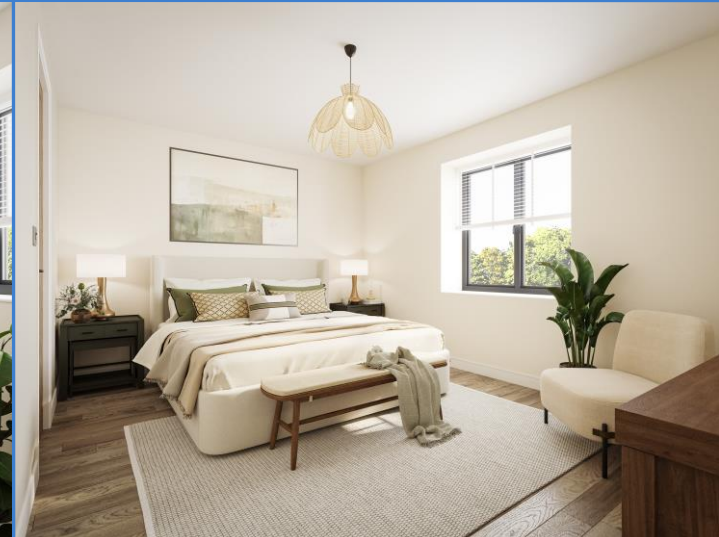
With window to the front.

Bedroom 3/Study 14' 10" x 8' 5" (4.51m x 2.56m)

With window to the side.

AGENTS NOTE

FOR SAT NAV DIRECTIONS USE POSTCODE TA13 5DJ



GROUND FLOOR
1350 sq.ft. (125.4 sq.m.) approx.



TOTAL FLOOR AREA: 1350 sq.ft. (125.4 sq.m.) approx.
Whilst every attempt has been made to ensure the accuracy of the floorplan contained here, measurements
of dimensions and areas are approximate and no responsibility is taken for any error,
and should be used as such by any
are not been tested and no guarantee
given.



1 Brandon House, West Street, Somerton, TA11 7PS

Tel: 01458 274153

email: somerton@georgejames.properties

www.georgejames.properties



THE PROPERTY MISDESCRIPTIONS ACT 1991 The Agent has not tested any apparatus, equipment, fixtures and fittings or services and so cannot verify that they are in working order or fit for the purpose. A Buyer is advised to obtain verification from their Solicitor or Surveyor. References to the Tenure of a Property are based on information supplied by the Seller. The Agent has not had sight of the title documents. A Buyer is advised to obtain verification from their Solicitor. You are advised to check the availability of this property before travelling any distance to view. We have taken every precaution to ensure that these details are accurate and not misleading. If there is any point which is of particular importance to you, please contact us and we will provide any information you require. This is advisable, particularly if you intend to travel some distance to view the property. The mention of any appliances and services within these details does not imply that they are in full and efficient working order. These particulars are in draft form awaiting Vendors confirmation of their accuracy. These details must therefore be taken as a guide only and approved details should be requested from the agents.