



## The Lake House

3 Bineham Court , Knole TA10 9JE

GeorgeJames PROPERTIES  
EST. 2014



# The Lake House

3 Bineham Court , Knole, TA10 9JE

Guide Price - £725,000

Tenure – Freehold

Local Authority – South Somerset District Council

## Summary

Bineham Court is a prestigious small estate just outside the hamlet of Knole. It is formed from the original model farm with the main farmhouse and various outbuildings, set around a lawned central courtyard. The farm was built in the 1850's by the Duke of Devonshire, and converted in 2001 to create 11 dwellings. Each dwelling is unique in design and size, all have been thoughtfully developed retaining many of the original features of the farmhouse and buildings and are built in Blue Lias stone under slate roofs. The Lake House is a large part of the original farmhouse and offers well-proportioned living space. The front door opens into a flagstone hall, which in turn leads to an elegant sitting room a well-appointed utility and cloakroom and a large farmhouse kitchen/dining room. From here, there is a stunning orangery with stone columns, high ceiling and a lantern roof, which enjoys delightful views over the garden and open countryside beyond. On the first floor there are four bedrooms and two bathrooms. Outside there are attractive formal gardens overlooking the estate's small lake with access to the properties private adjoining paddock, in all amounting to approximately 2 acres.

## Amenities

Bineham is situated just outside the Hamlet of Knole which is tucked away from main roads and surrounded by beautiful countryside. Knole has remained very much unspoilt with a variety of mainly period cottages and houses. Long Sutton is situated approximately one mile to the East and offers facilities which include a village shop, village hall, church and the well patronised Long Sutton Golf Club. The Devonshire Arms is a popular pub/hotel and there are numerous walks to be had along the river and across the moors. The village provides a much respected Primary School that has a Breakfast Club, plus an After School Club for pupils. There are also excellent secondary schools in the area including Huish Episkopi Academy, Millfield, Wells Cathedral School, Taunton School and Sherborne, as well as Hazelgrove and Sherborne Prep schools. A wide selection of amenities can be found in Somerton - the Royal and ancient capital of Wessex, approximately three miles away.





## Services

Mains water and electricity. Mains drainage, oil fired central heating and hot water. Quarterly management fee of £175, Council tax band G

### Entrance Hall 8' 11" x 9' 10" (2.73m x 3.0m)

Flagstone floor, turned staircase leading to first floor, under stairs cupboard, radiator.

### Utility Room / WC 8' 10" x 9' 10" (2.7m x 3m)

With window to the rear. Low level WC, radiator, range of wall and base cupboards, Belfast sink with mixer tap, space for washing machine and tumble dryer.

### Sitting Room 16' 8" x 17' 4" (5.09m x 5.29m)

Two sash windows to the front. Fireplace housing cast iron wood burning stove, pictures lights.

### Kitchen/Dining Room 17' 4" x 18' 3" (5.29m x 5.55m)

With sash window to the front. Flagstone floor and range of base units. Double Belfast sink unit with mixer tap, space for dishwasher. Large recess housing four oven AGA with electric side module, recessed to either side with inset lighting, storage units with granite worktops and boiler storage, doors lead to:-

### Orangery 15' 7" x 25' 10" (4.75m x 7.87m)

This large, double glazed, impressive room has beautiful views across the garden and the countryside beyond, with oak flooring, two sets of French doors opening onto the garden, two radiators. High ceiling with lantern window.

### Landing

Window to the rear, radiator.

### Bedroom 1 16' 2" x 14' 0" (4.93m x 4.27m)

With sash windows to the front and rear, two radiators. Range of built in wardrobes and door leading to the en-suite.

### En-suite 8' 6" x 5' 0" (2.6m x 1.52m)

Low level WC with hand wash basin, shower cubicle with mains shower, rain shower head and hand held unit, ladder towel rail.

### Inner Landing

With access to the loft space.

### Bathroom 6' 8" x 6' 9" (2.03m x 2.05m)

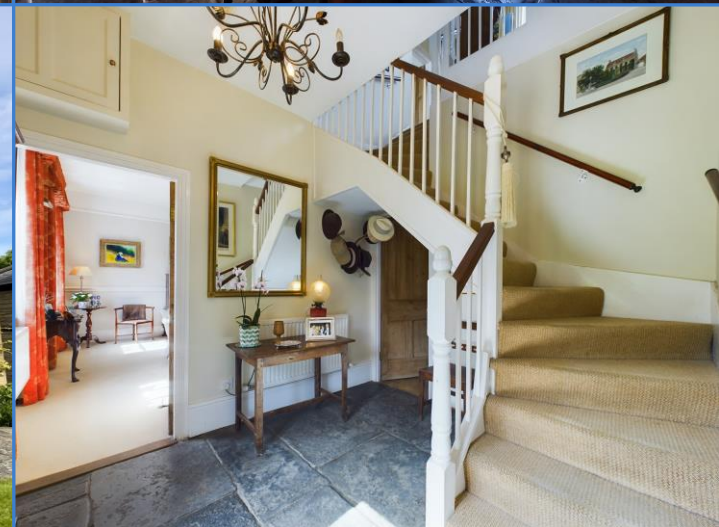
Bathroom suite comprising of low level WC, wash hand basin with large mirror with cupboard under. Panelled bath with shower attachment, fitted wall mirror and light, heated ladder towel rail.

### Bedroom 2 11' 3" x 9' 4" (3.43m max x 2.84m)

Sash window to front, radiator, high level storage cupboards.

### Bedroom 3 11' 2" x 7' 3" (3.40m x 2.21m)

Sash window to front, radiator.





**Bedroom 4** 10' 0" x 6' 7" (3.06m max x 2.00m)

With sash window to front, radiator and built in cupboard.

**Garden & Paddock**

The front of the property overlooks the lawned courtyard with pedestrian access and gates to the rear garden. The terrace and large lawned gardens surround the rear and side of the house which overlook the estate lake and paddock which belongs to the property. The lower lawn lies below a low stone wall with a central rose arch, there are flower and rose beds and potted urns throughout. There is a wooden shed and large log store. In a secluded corner there is a discrete and attractive BBQ area. The property sits in a plot amounting to approximately 2 acres.

**Double Garage** 19' 4" x 18' 8" (5.90m x 5.70m)

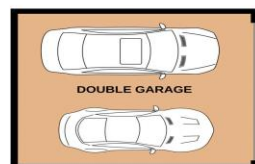
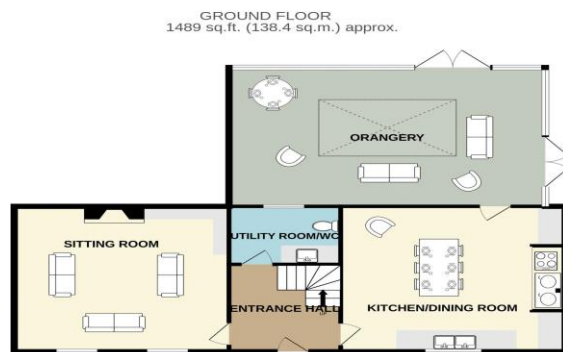
With electric up and over garage door, power and light.











TOTAL FLOOR AREA: 2232 sq.ft. (207.4 sq.m.) approx.  
Whilst every attempt has been made to ensure the accuracy of the floorplan contained here, measurements of doors, windows, rooms and any other items are approximate and no responsibility is taken for any error, omission or mis-statement. This plan is for illustrative purposes only and should be used as such by any prospective purchaser. The services, systems and appliances shown have not been tested and no guarantee as to their operability or efficiency can be given.  
Made with Metrepro 5.0204

Energy Efficiency Rating			
Score	Energy rating	Current	Potential
92+	A		
81-91	B		87 B
69-80	C		
55-68	D		
39-54	E	44 E	
21-38	F		
1-20	G		



1 Brandon House, West Street, Somerton, TA11 7PS

Tel: 01458 274153

email: [somerton@georgejames.properties](mailto:somerton@georgejames.properties)

[www.georgejames.properties](http://www.georgejames.properties)



THE PROPERTY MISDESCRIPTIONS ACT 1991 The Agent has not tested any apparatus, equipment, fixtures and fittings or services and so cannot verify that they are in working order or fit for the purpose. A Buyer is advised to obtain verification from their Solicitor or Surveyor. References to the Tenure of a Property are based on information supplied by the Seller. The Agent has not had sight of the title documents. A Buyer is advised to obtain verification from their Solicitor. You are advised to check the availability of this property before travelling any distance to view. We have taken every precaution to ensure that these details are accurate and not misleading. If there is any point which is of particular importance to you, please contact us and we will provide any information you require. This is advisable, particularly if you intend to travel some distance to view the property. The mention of any appliances and services within these details does not imply that they are in full and efficient working order. These particulars are in draft form awaiting Vendors confirmation of their accuracy. These details must therefore be taken as a guide only and approved details should be requested from the agents.