




ANTHONY JAMES
PROPERTIES
T: 023 8084 4405
www.anthonyjamesproperties.co.uk
FOR SALE

25 Dale Road, Hythe, SO45 5DS
£450,000


ANTHONY JAMES
PROPERTIES



25 Dale Road

Hythe, Southampton

This spacious four bedroom chalet bungalow is offered with no forward chain and is ideally located within close proximity to Hythe Village and convenient bus routes. The accommodation features four generous bedrooms, a large lounge that opens onto a conservatory, and an open plan kitchen/ dining room, perfect for family living and entertaining. A well appointed family bathroom and a separate WC provide added convenience. The property offers flexible living arrangements, making it suitable for a variety of lifestyles.

Outside, the property boasts a driveway to the front providing off road parking for at least two vehicles, with a pathway leading to the front door and garage access via an up and over door. The extensive fan shaped rear garden is a true highlight, offering an ideal space for keen gardeners and families to enjoy, with steps leading to various well maintained areas of flowers and shrubs. There is also access to the garage via a side door. The single garage benefits from power and lighting, with the gas fired boiler located within, adding practicality to this attractive home. This property combines generous living space with excellent outdoor areas, making it a fantastic opportunity for buyers seeking comfort and convenience.

Council Tax band: D

Tenure: Freehold



1 Southward House
Dibden Purlieu SO45 4PT



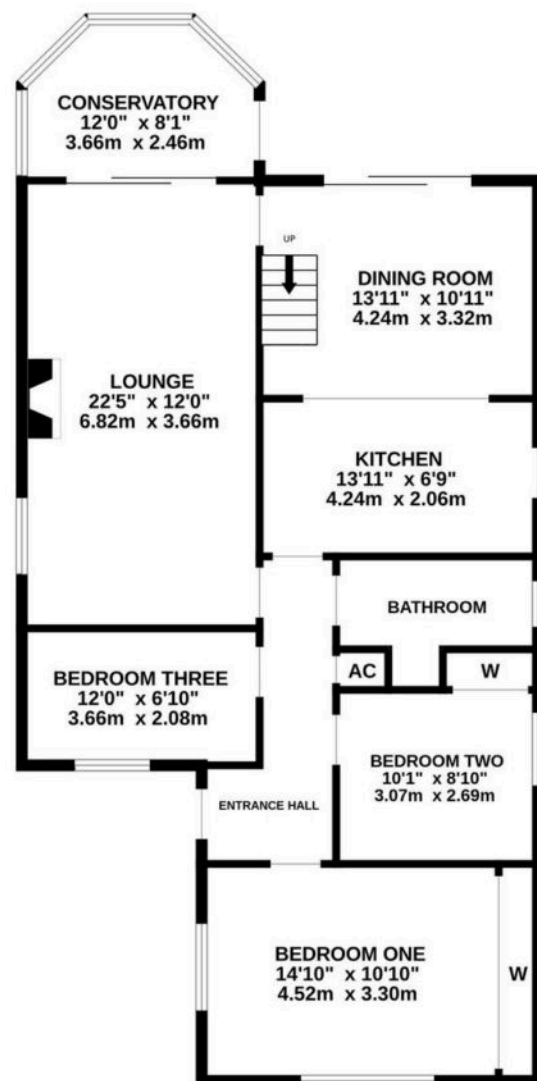
T: 02380 844405

info@anthonyjamesproperties.co.uk





GROUND FLOOR



1ST FLOOR

