



23 Birchdale, Hythe
£325,000


ANTHONY JAMES
PROPERTIES



23 Birchdale

Hythe, Southampton

This well presented semi-detached house is set within a pleasing cul-de-sac location on the outskirts of Hythe, enjoys a scenic backdrop of wooded grounds, and boasts the convenience of no forward chain.

Comprising three generous bedrooms and a spacious shower room, the interior also features an entrance hall with bespoke fitted storage, a lounge/dining room, and a modern kitchen with integrated appliances. Further appealing features include UPVC double glazing, gas central heating and neutral decoration.

Outside, the well-maintained abode offers a large driveway providing plenty of off-road parking, an integral garage, and an enclosed rear garden. An internal viewing is strongly recommended to fully appreciate the appeal and potential of this delightful home which would suit a wide variety of prospective buyers.

Council Tax band: C

Tenure: Freehold



1 Southward House
Dibden Purlieu SO45 4PT

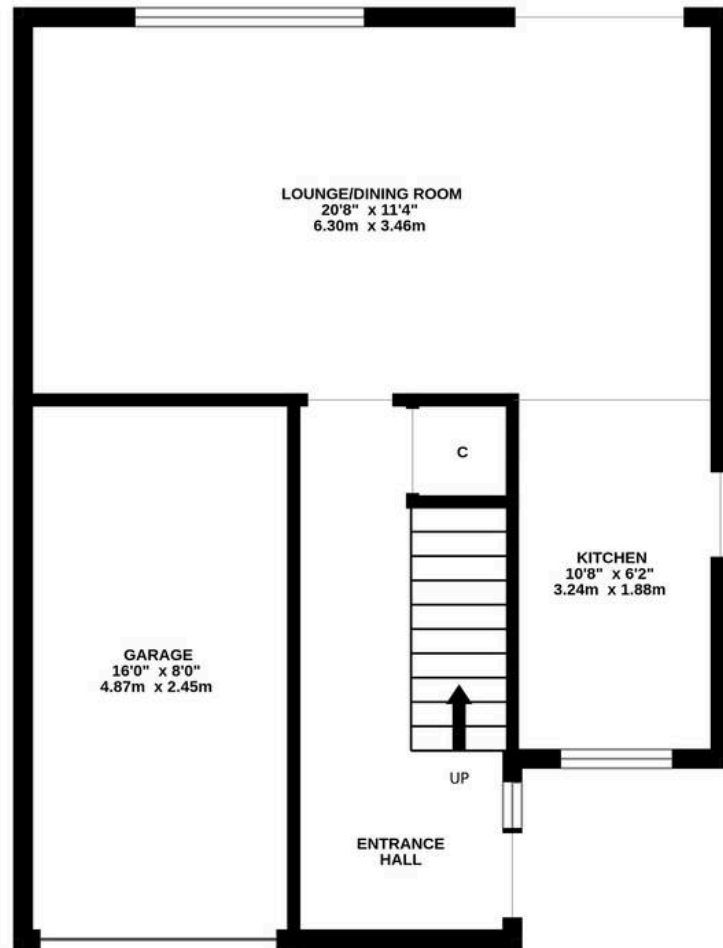


T: 02380 844405

info@anthonyjamesproperties.co.uk



GROUND FLOOR



1ST FLOOR

