



Field View Blackfield Road, Fawley
£595,000


ANTHONY JAMES
PROPERTIES



Field View Blackfield Road

Fawley, Southampton

Nestled on the outskirts of Fawley, this exceptional five double bedroom house offers the perfect blend of character and modern living. Situated on a non-estate plot, this property boasts flexible accommodation and annex space. As you step inside, you are greeted by a light and airy atmosphere, with an open plan feel ideal for entertaining guests or simply relaxing with the family. The recently installed utility room and WC add convenience to the living space, while the oak flooring throughout the living room and conservatory align with the charm of this characterful home.

Featuring two spacious living rooms and a total of three wood burners (plus gas fired central heating throughout), two of which have been recently replaced, this home offers warmth and comfort throughout. With all bedrooms designed as double bedrooms, there is ample space for a growing family or visiting guests. The ground floor shower room and first-floor family bathroom provide practicality with the potential for an annex or guest suite.

Council Tax band: E

Tenure: Freehold



1 Southward House
Dibden Purlieu SO45 4PT

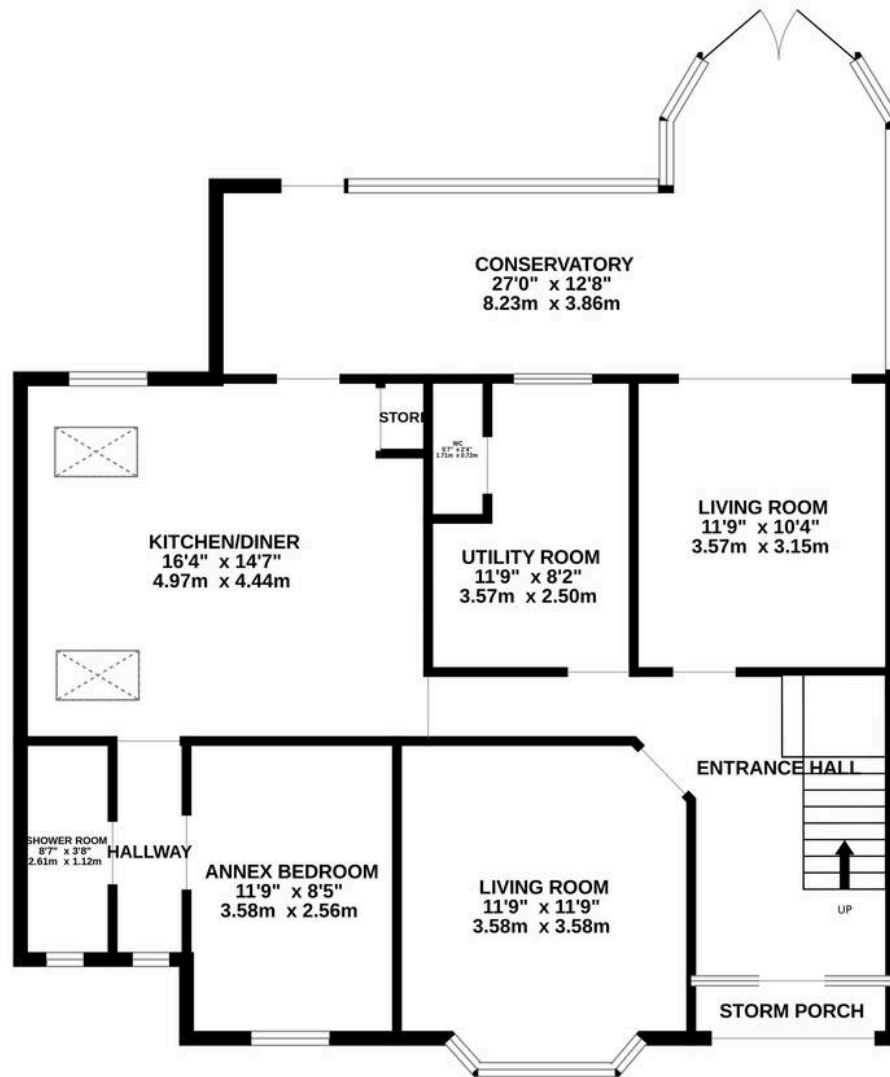


T: 02380 844405

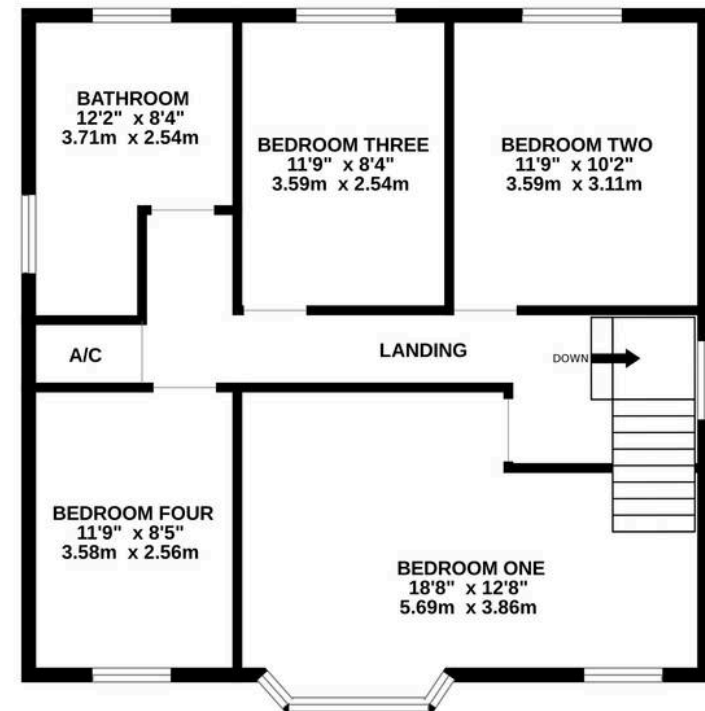
info@anthonyjamesproperties.co.uk



GROUND FLOOR
1155 sq.ft. (107.3 sq.m.) approx.



1ST FLOOR
719 sq.ft. (66.8 sq.m.) approx.



TOTAL FLOOR AREA : 1874 sq.ft. (174.1 sq.m.) approx.

Whilst every attempt has been made to ensure the accuracy of the floorplan contained here, measurements of doors, windows, rooms and any other items are approximate and no responsibility is taken for any error, omission or mis-statement. This plan is for illustrative purposes only and should be used as such by any prospective purchaser. The services, systems and appliances shown have not been tested and no guarantee as to their operability or efficiency can be given.

Made with Metropix ©2025