



70 Springfield Avenue, Holbury
£355,000


ANTHONY JAMES
PROPERTIES



70 Springfield Avenue

Holbury, Southampton

This 3-bedroom detached bungalow is a wonderful opportunity to acquire a property with no onward chain. The property boasts three generously sized bedrooms, a large open plan kitchen/dining room, a spacious lounge, and a modern bathroom. The well-maintained front and rear gardens offer a peaceful space to unwind, with a driveway and garage providing ample parking space. Situated near the New Forest National Park this property must be viewed to be fully appreciated.

Council Tax band: D

Tenure: Freehold



1 Southward House
Dibden Purlicu SO45 4PT

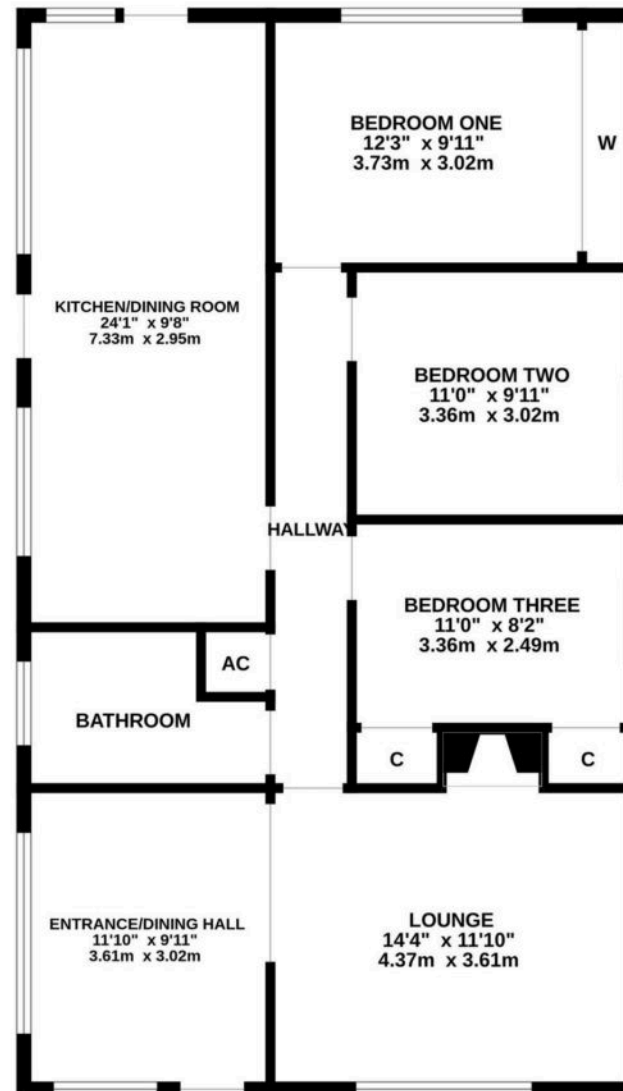


T: 02380 844405

info@anthonyjamesproperties.co.uk



GROUND FLOOR
1000 sq.ft. (92.9 sq.m.) approx.



TOTAL FLOOR AREA : 1000 sq.ft. (92.9 sq.m.) approx.

Whilst every attempt has been made to ensure the accuracy of the floorplan contained here, measurements of doors, windows, rooms and any other items are approximate and no responsibility is taken for any error, omission or mis-statement. This plan is for illustrative purposes only and should be used as such by any prospective purchaser. The services, systems and appliances shown have not been tested and no guarantee as to their operability or efficiency can be given.
Made with Metropix ©2025