



Ameria Whinfield Road, Dibden Purlieu, SO45 4QB  
£499,950

  
ANTHONY JAMES  
PROPERTIES





# Ameria Whinfield Road

Dibden Purlieu, Southampton

An impressive, refurbished detached house, which is situated within a short walk of Dibden Purlieu Village and The New Forest National Park. Internally there are three double bedrooms, a generous lounge/family room, an open plan kitchen/breakfast room, a ground floor cloak and a family bathroom. Outside of the property you will find ample driveway parking, a single garage and an pleasing garden to the rear. Further features include new UPVC double glazing throughout and gas central heating. An internal viewing is strongly recommended to fully appreciate the accommodation on offer.

Council Tax band: E

Tenure: Freehold



1 Southward House  
Dibden Purlieu SO45 4PT



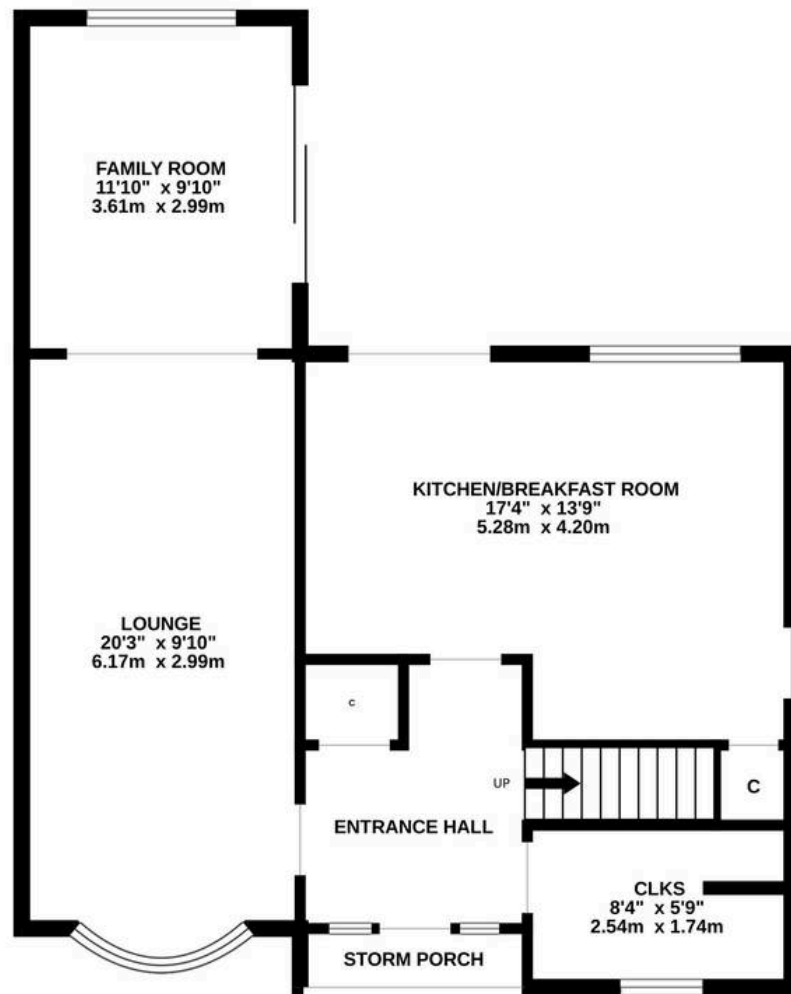
T: 02380 844405

info@anthonyjamesproperties.co.uk

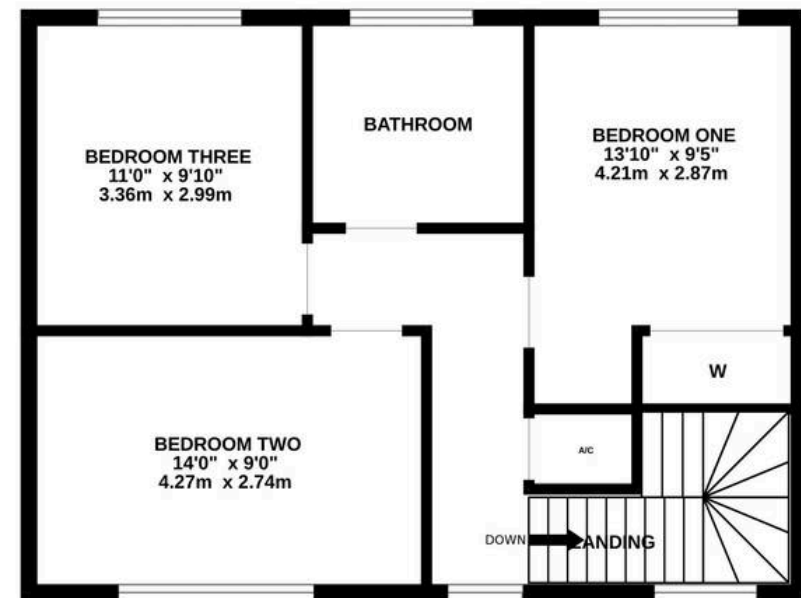




## GROUND FLOOR



## 1ST FLOOR



Whilst every attempt has been made to ensure the accuracy of the floorplan contained here, measurements of doors, windows, rooms and any other items are approximate and no responsibility is taken for any error, omission or mis-statement. This plan is for illustrative purposes only and should be used as such by any prospective purchaser. The services, systems and appliances shown have not been tested and no guarantee as to their operability or efficiency can be given.

Made with Metropix ©2023