



3 Fairway Road, Hythe, SO45 5FU  
£410,000

  
ANTHONY JAMES  
PROPERTIES





## 3 Fairway Road

Hythe, Southampton

Nestled in the sought-after Lower Hollybank area, this three to five-bedroom chalet bungalow presents a rare opportunity for discerning buyers. Boasting a flexible layout spread over two floors, this property is available with no onward chain, making it an attractive prospect for those looking to settle in Hollybank. Complete with driveway parking, garage, separate WC, and wet room, the property is equipped with modern comforts including gas central heating and double glazing. The pleasant, low-maintenance rear garden provides a tranquil retreat for residents, offering a perfect balance of relaxation and outdoor enjoyment.

Council Tax band: D

Tenure: Freehold



1 Southward House  
Dibden Purlieu SO45 4PT



T: 02380 844405

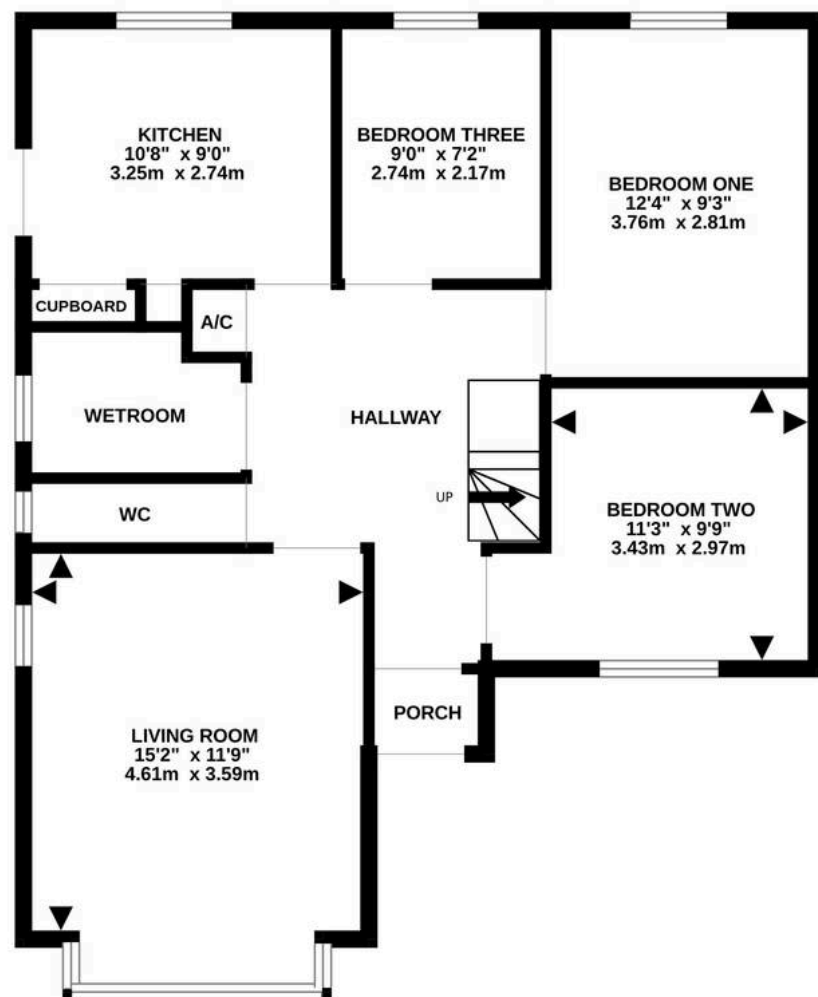
info@anthonyjamesproperties.co.uk



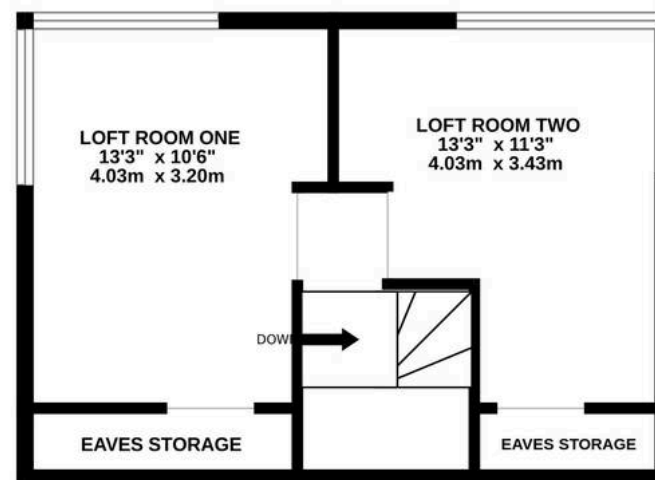




GROUND FLOOR  
732 sq.ft. (68.0 sq.m.) approx.



1ST FLOOR  
339 sq.ft. (31.5 sq.m.) approx.



TOTAL FLOOR AREA : 1071 sq.ft. (99.5 sq.m.) approx.

Whilst every attempt has been made to ensure the accuracy of the floorplan contained here, measurements of doors, windows, rooms and any other items are approximate and no responsibility is taken for any error, omission or mis-statement. This plan is for illustrative purposes only and should be used as such by any prospective purchaser. The services, systems and appliances shown have not been tested and no guarantee as to their operability or efficiency can be given.  
Made with Metropix ©2025