



6 Broadley Close, Holbury
£299,950



6 Broadley Close

Holbury, Southampton

This appealing, semi-detached house presents an excellent opportunity for prospective buyers to personalise their own home. A well-designed interior layout features an entrance hall, three bedrooms, a bathroom, a ground floor WC, a dual-aspect lounge/dining room, and a separate kitchen/dining room. Notable features include replaced UPVC double glazed windows and gas central heating. Outside, the property enjoys gardens to the front and back, providing areas for relaxation and leisure. There is also driveway parking and a single garage to ensure practicality. Offered for sale with no chain, this would make a convenient purchase for a wide variety of people, and we strongly advise an internal viewing.

Council Tax band: C

Tenure: Freehold



1 Southward House
Dibden Purlieu SO45 4PT

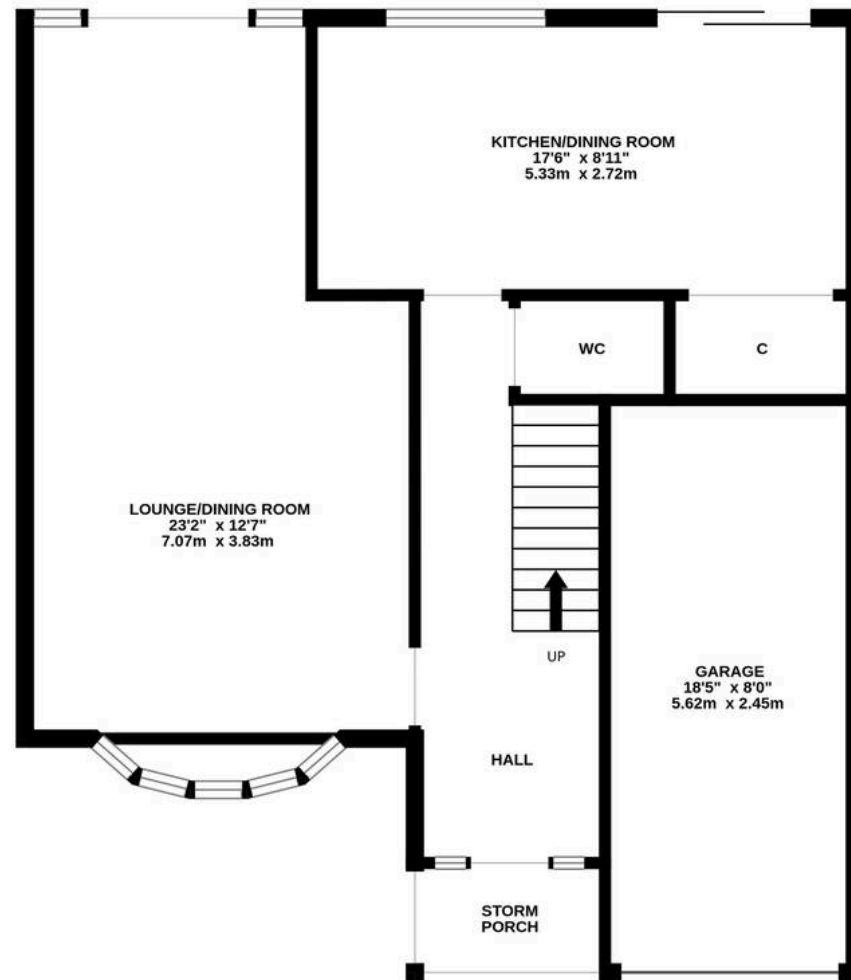


T: 02380 844405

info@anthonyjamesproperties.co.uk



GROUND FLOOR



1ST FLOOR

