



1 Nelson Court, Hythe
£525,000


ANTHONY JAMES
PROPERTIES



1 Nelson Court

Hythe, Southampton

This impeccably presented 4 bedroom detached house offers spacious and versatile accommodation perfect for modern family living. The ground floor comprises an inviting open plan lounge/dining room, a well-appointed kitchen, a study and a generous conservatory, ideal for relaxation and entertaining. Upstairs boasts four double bedrooms, including an ensuite to the master, along with a family bathroom. A ground floor WC adds convenience to this spacious family home. The property also benefits from new carpets throughout the first floor, an immaculate rear garden, a driveway providing ample off-road parking and a tandem garage.

Council Tax band: E

Tenure: Freehold

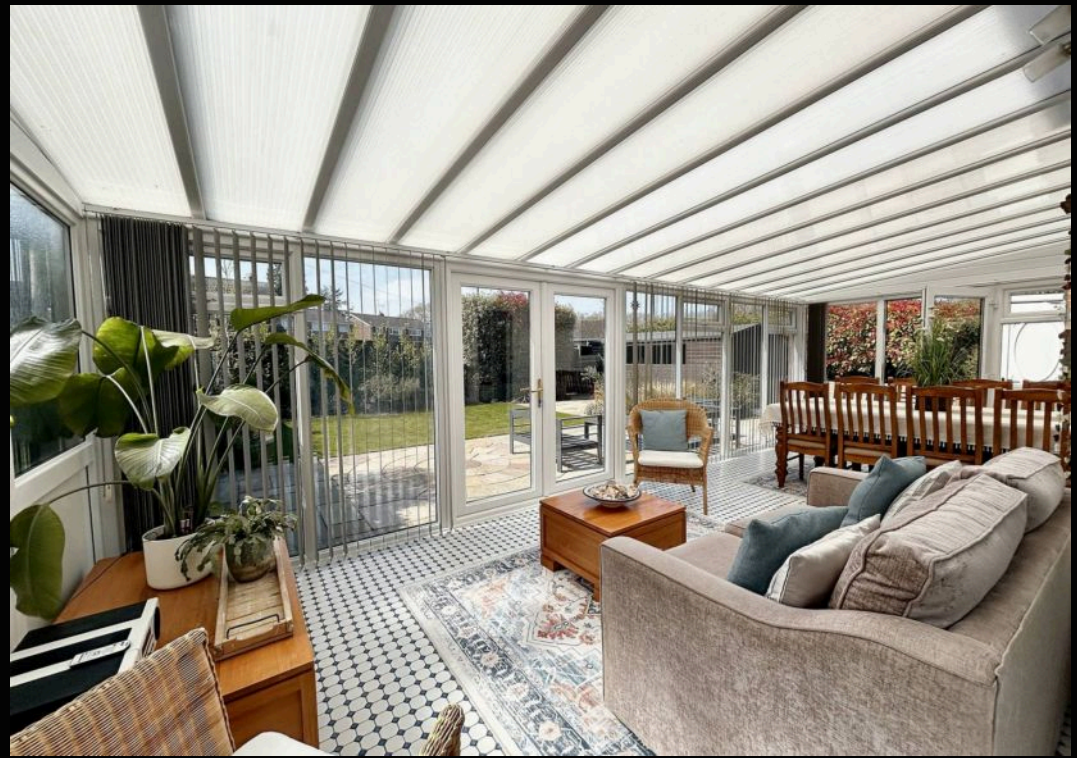


1 Southward House
Dibden Purlicu SO45 4PT

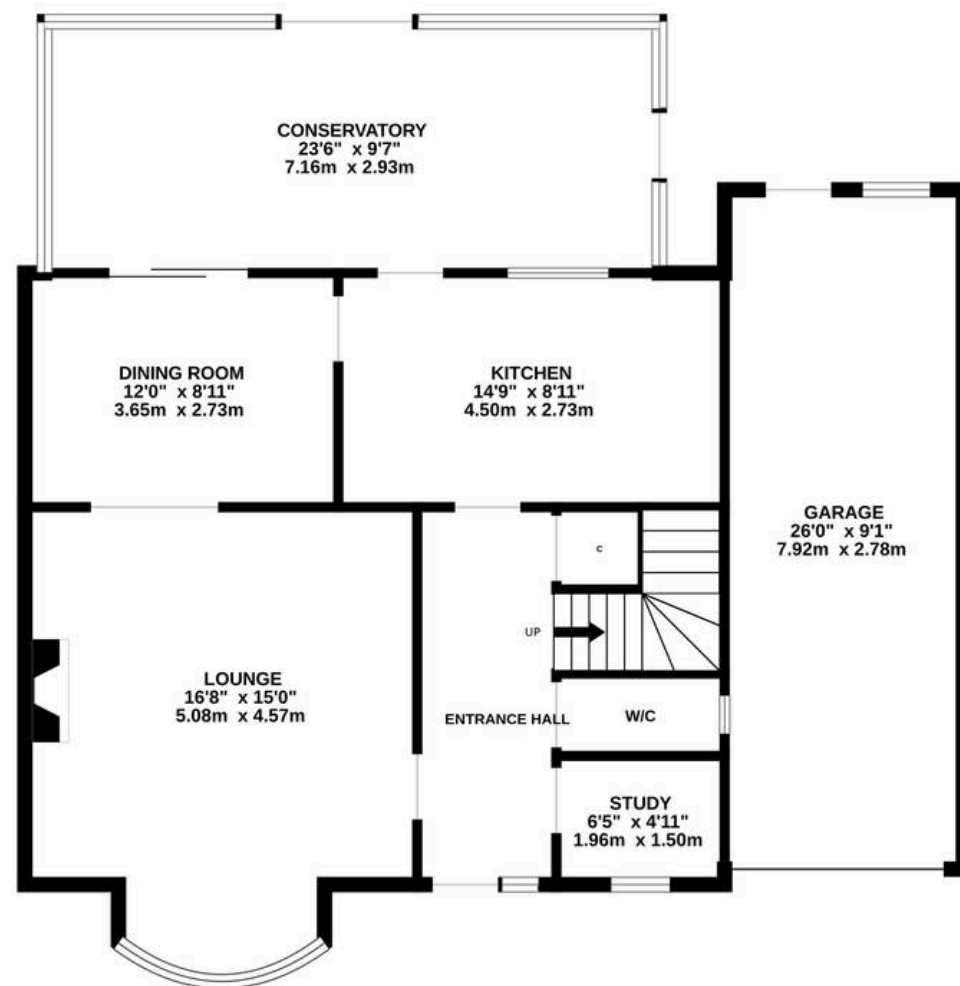


T: 02380 844405

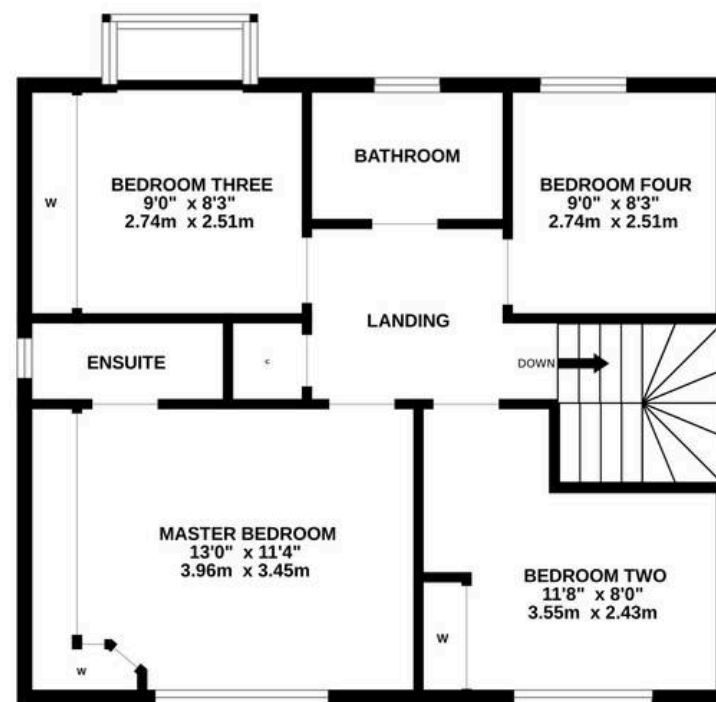
info@anthonyjamesproperties.co.uk



GROUND FLOOR
1108 sq.ft. (103.0 sq.m.) approx.



1ST FLOOR
639 sq.ft. (59.4 sq.m.) approx.



TOTAL FLOOR AREA : 1748 sq.ft. (162.4 sq.m.) approx.

Whilst every attempt has been made to ensure the accuracy of the floorplan contained here, measurements of doors, windows, rooms and any other items are approximate and no responsibility is taken for any error, omission or mis-statement. This plan is for illustrative purposes only and should be used as such by any prospective purchaser. The services, systems and appliances shown have not been tested and no guarantee as to their operability or efficiency can be given.

Made with Metropix ©2025