



18a Atheling Road, Hythe  
£875,000

  
ANTHONY JAMES  
PROPERTIES





# 18a Atheling Road

Hythe, Southampton

This stunning 4-bedroom detached house presents a unique blend of charm and contemporary living. The property features four double bedrooms, an extensive triple aspect lounge, large open plan kitchen/dining room with a separate utility room, a ground floor WC, ensuite, and family bathroom. The addition of a study/bedroom five provides flexible living arrangements. A double garage and extensive driveway offer ample parking space, complemented by the generous wrap-around gardens that enhance the property's appeal.

Council Tax band: E

Tenure: Freehold



1 Southward House  
Dibden Purlieu SO45 4PT



T: 02380 844405

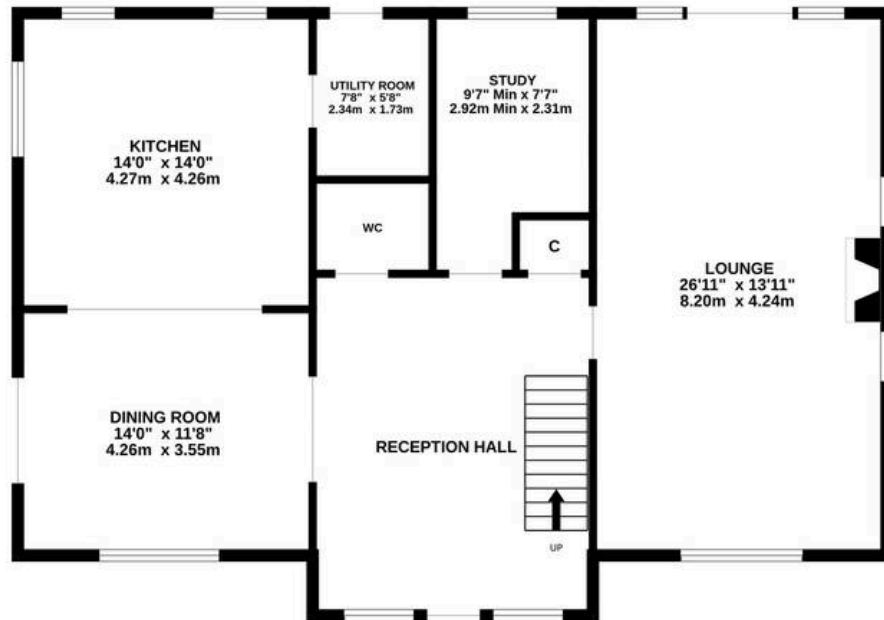
[info@anthonyjamesproperties.co.uk](mailto:info@anthonyjamesproperties.co.uk)



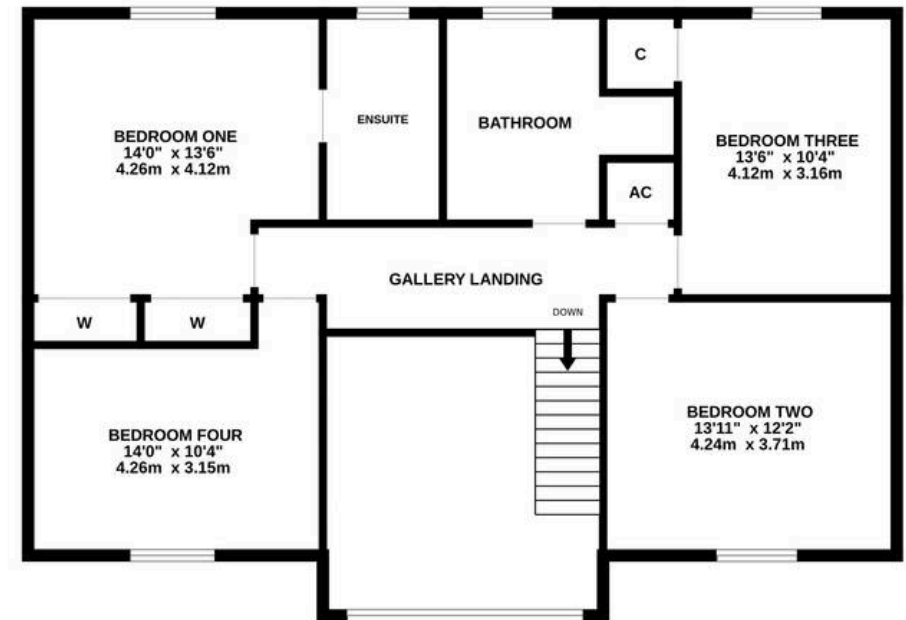




**GROUND FLOOR**  
1088 sq.ft. (101.1 sq.m.) approx.



**1ST FLOOR**  
1095 sq.ft. (101.7 sq.m.) approx.



**TOTAL FLOOR AREA : 2183 sq.ft. (202.8 sq.m.) approx.**

Whilst every attempt has been made to ensure the accuracy of the floorplan contained here, measurements of doors, windows, rooms and any other items are approximate and no responsibility is taken for any error, omission or mis-statement. This plan is for illustrative purposes only and should be used as such by any prospective purchaser. The services, systems and appliances shown have not been tested and no guarantee as to their operability or efficiency can be given.

Made with Metropix ©2025