



22 Ashleigh Close, Hythe  
£495,000

  
ANTHONY JAMES  
PROPERTIES





## 22 Ashleigh Close

Hythe, Southampton

Set on an impressive, mature plot measuring approximately 0.3 acres, this appealing detached house affords a wealth of opportunity for discerning buyers. Internally, the extended accommodation provides the potential for four bedrooms, a bathroom, and ground floor WC, along with spacious and flexible living areas. This includes an extended lounge/dining room, a kitchen/breakfast room and an additional reception room which could be used as a music/play room or office. Outside, you will find driveway parking, an integral garage and a southerly facing rear garden which just goes on and on... ! This appealing property offers an excellent canvas for any potential buyer to personalise and improve a home to suit their own needs. Furthermore, there is no forward chain.

Council Tax band: E

Tenure: Freehold



1 Southward House  
Dibden Purlieu SO45 4PT



T: 02380 844405

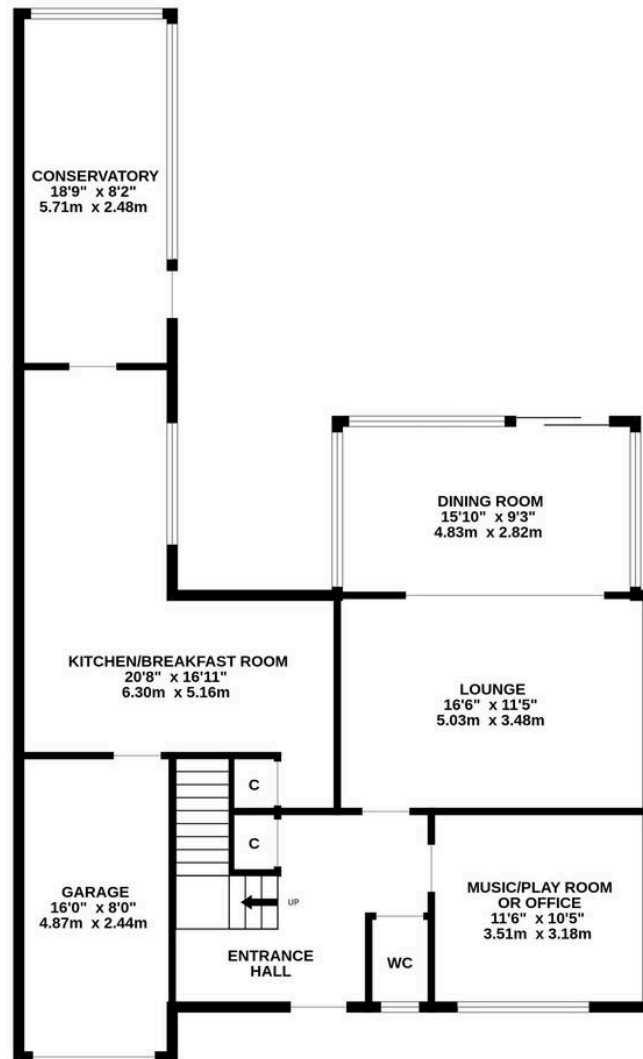
info@anthonyjamesproperties.co.uk



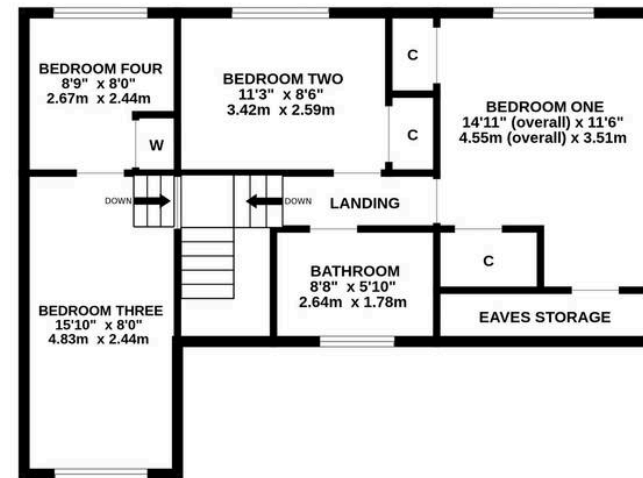




GROUND FLOOR



1ST FLOOR



Whilst every attempt has been made to ensure the accuracy of the floorplan contained here, measurements of doors, windows, rooms and any other items are approximate and no responsibility is taken for any error, omission or mis-statement. This plan is for illustrative purposes only and should be used as such by any prospective purchaser. The services, systems and appliances shown have not been tested and no guarantee as to their operability or efficiency can be given.

Made with Metropix ©2025