



**31 Scott-Paine Drive, Hythe**

Offers Over **£475,000**



**ANTHONY JAMES**  
PROPERTIES





# 31 Scott-Paine Drive

Hythe, Southampton

Located in the sought-after area of Hythe, this impressive 4 bedroom townhouse offers a perfect blend of modern living and coastal charm. The property boasts a spacious open-plan kitchen/dining room, a generous lounge, two ensuites, a family bathroom, and a further WC for convenience. The enclosed and sunny rear garden provides a perfect space for outdoor entertaining or simply unwinding. With a garage and driveway parking, there is ample space for vehicles. Situated within a short walk of Hythe Village and its amenities, this home offers a convenient lifestyle.

Council Tax band: F

Tenure: Freehold



1 Southward House  
Dibden Purlieu SO45 4PT



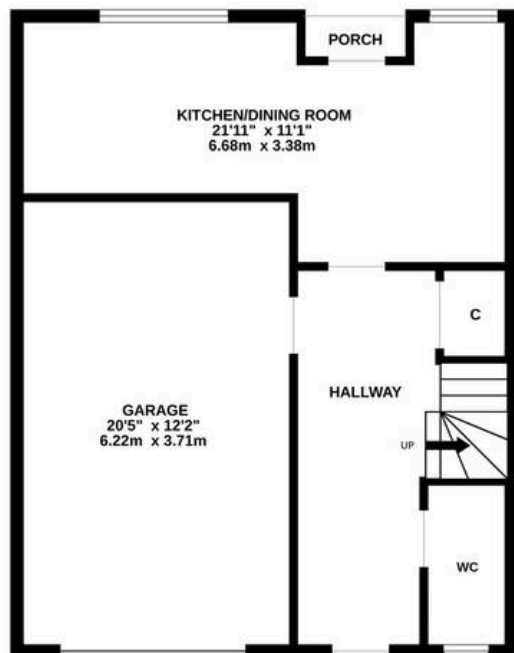
T: 02380 844405

info@anthonyjamesproperties.co.uk

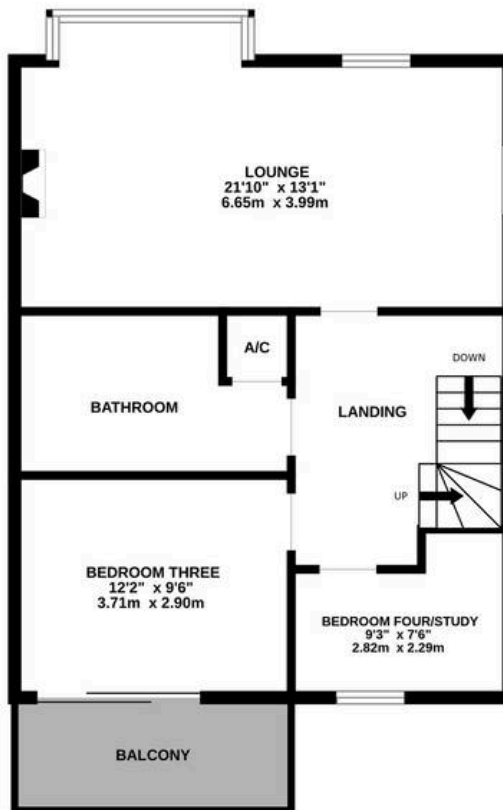




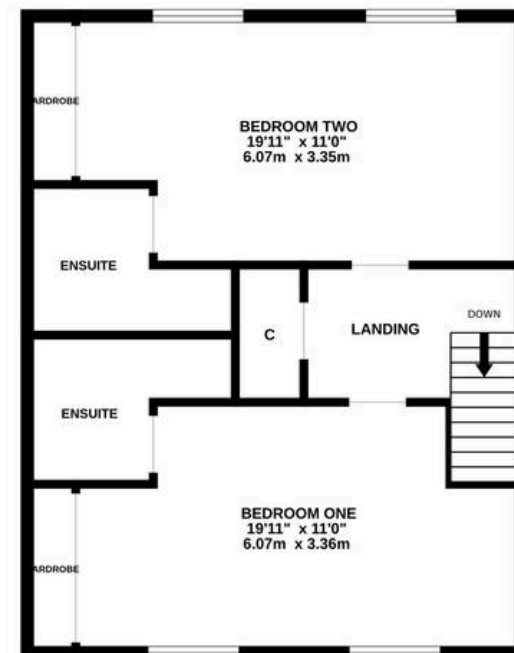
GROUND FLOOR  
608 sq.ft. (56.5 sq.m.) approx.



1ST FLOOR  
623 sq.ft. (57.9 sq.m.) approx.



2ND FLOOR  
609 sq.ft. (56.6 sq.m.) approx.



TOTAL FLOOR AREA : 1841 sq.ft. (171.0 sq.m.) approx.

Whilst every attempt has been made to ensure the accuracy of the floorplan contained here, measurements of doors, windows, rooms and any other items are approximate and no responsibility is taken for any error, omission or mis-statement. This plan is for illustrative purposes only and should be used as such by any prospective purchaser. The services, systems and appliances shown have not been tested and no guarantee as to their operability or efficiency can be given.

Made with Metropix ©2025