



2 Barclay Mews, Hythe
£469,950



2 Barclay Mews

Hythe, Southampton

OFFERS INVITED! Built by respected local builders "Noble & Sons" in the 1980s, this property is set within a select cul-de-sac of just 7 similar homes, well-positioned for both the New Forest National Park and the waterfront. The interior boasts four generously sized bedrooms, including an ensuite, a family bathroom, and a convenient ground floor WC. The accommodation also comprises an entrance lobby, a hallway, a kitchen/dining room and a separate lounge, ensuring ample space for both entertaining and relaxation. No to mention, that the double glazing has recently been replaced throughout. Outside, the property features driveway parking for three vehicles, a single garage, and a private rear garden. Internal viewing is highly recommended to fully appreciate all the pleasing features that this property has to offer.

Council Tax band: E

Tenure: Freehold



1 Southward House
Dibden Purlicu SO45 4PT

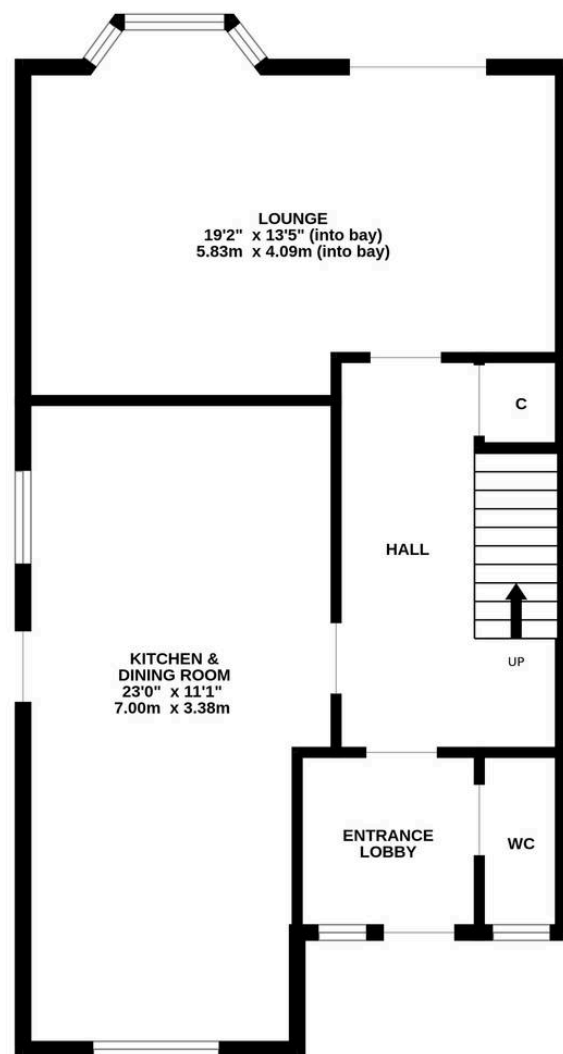


T: 02380 844405

info@anthonyjamesproperties.co.uk



GROUND FLOOR



1ST FLOOR

