



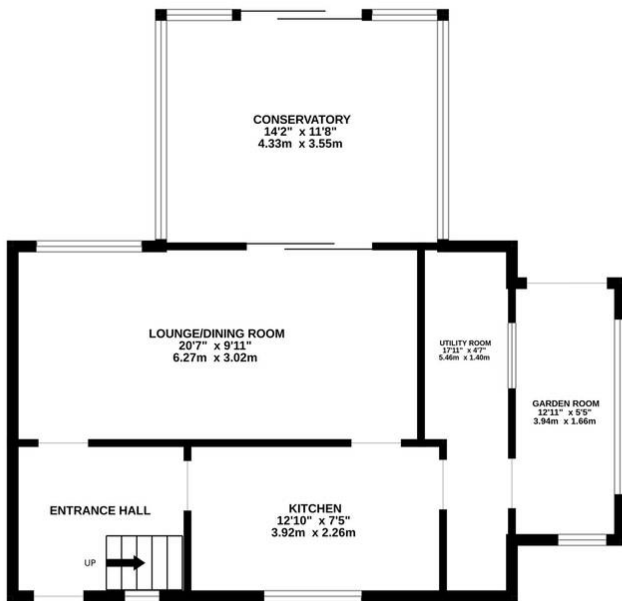
## 14 Hobart Drive, Hythe – SO45 6FH

£319,950 Freehold

An end of terrace house which offers great potential and located within a short walk of Hythe Village. Internally there are three bedrooms, a lounge/dining room, a kitchen, a separate utility room, a family bathroom, separate WC, a large conservatory and a garden room. Outside of the property you will find an extensive rear garden and driveway parking to the front. Further features include double glazing and gas central heating. In addition to this, the property is being sold with NO ONWARD CHAIN, making an internal viewing essential.



GROUND FLOOR  
679 sq.ft. (63.1 sq.m.) approx.



1ST FLOOR  
443 sq.ft. (41.2 sq.m.) approx.



TOTAL FLOOR AREA : 1123 sq.ft. (104.3 sq.m.) approx.

Whilst every attempt has been made to ensure the accuracy of the floorplan contained here, measurements of doors, windows, rooms and any other items are approximate and no responsibility is taken for any error, omission or mis-statement. This plan is for illustrative purposes only and should be used as such by any prospective purchaser. The services, systems and appliances shown have not been tested and no guarantee as to their operability or efficiency can be given.

Made with Metropix ©2024

You can include any text here. The text can be modified upon generating your brochure.



**1 Southward House**  
Dibden Purlieu SO45 4PT



**T: 02380 844405**  
info@anthonyjamesproperties.co.uk