

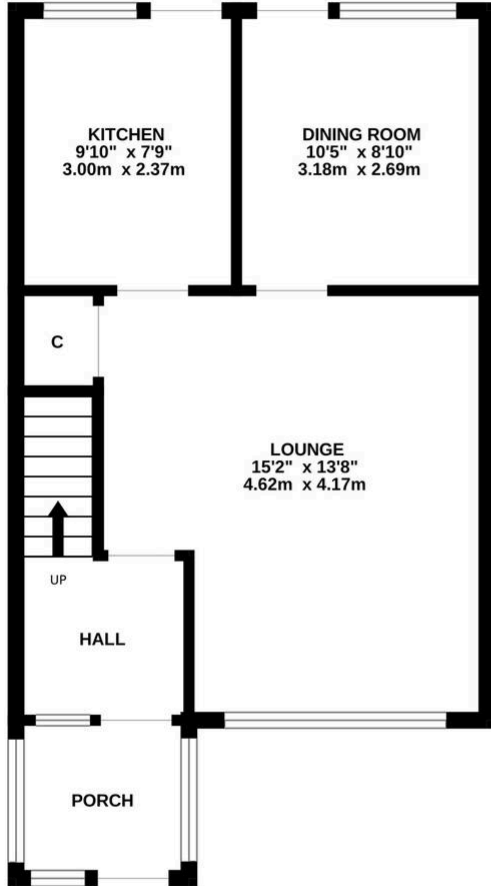


15 Greatwood Close, Hythe – SO45 3BU

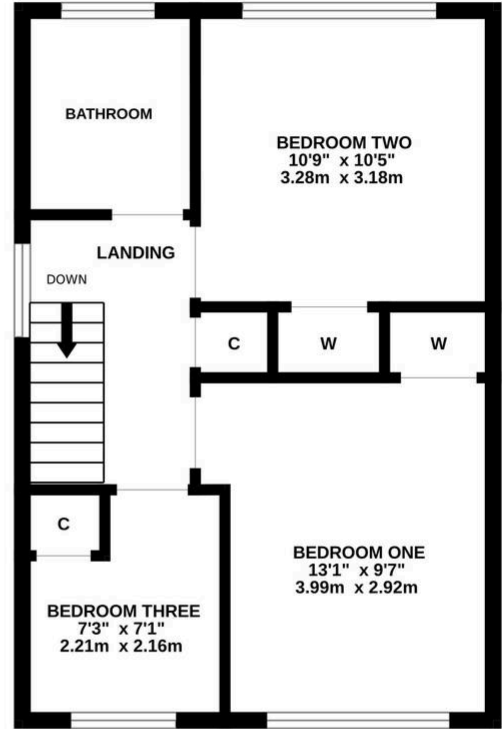
£319,950 Freehold

A semi detached family home which is located close by to the villages of Dibden Purlieu and Hythe. Internally there are three bedrooms, a lounge, a well appointed kitchen, a separate dining room and a shower room. Outside of the property you will find well maintained front and rear gardens, a driveway and a single garage. Further features include UPVC double glazing and gas central heating. An internal viewing is strongly recommended to fully appreciate the accommodation on offer.

GROUND FLOOR
448 sq.ft. (41.6 sq.m.) approx.



1ST FLOOR
414 sq.ft. (38.5 sq.m.) approx.



TOTAL FLOOR AREA : 862 sq.ft. (80.1 sq.m.) approx.

Whilst every attempt has been made to ensure the accuracy of the floorplan contained here, measurements of doors, windows, rooms and any other items are approximate and no responsibility is taken for any error, omission or mis-statement. This plan is for illustrative purposes only and should be used as such by any prospective purchaser. The services, systems and appliances shown have not been tested and no guarantee as to their operability or efficiency can be given.
Made with Metropix ©2024

You can include any text here. The text can be modified upon generating your brochure.



1 Southward House
Dibden Purlieu SO45 4PT



T: 02380 844405
info@anthonyjamesproperties.co.uk