



Wrenley, West Common, Langley
£595,000



ANTHONY JAMES
PROPERTIES



Wrenley, West Common

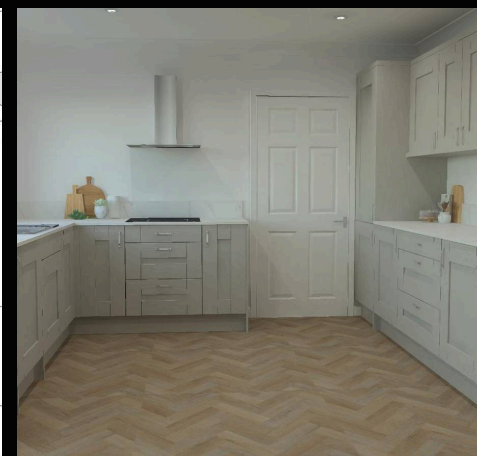
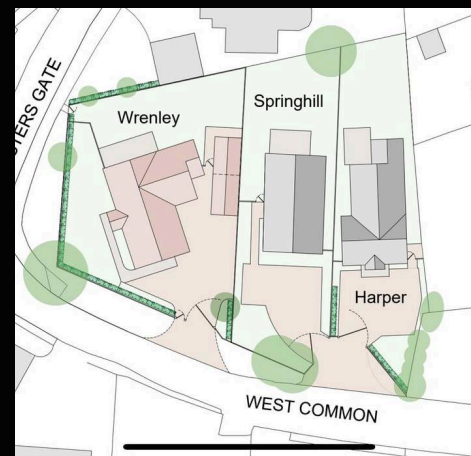
Langley, Southampton

Your choice of three beautifully designed bungalows (two new builds and one complete renovation), each featuring a high specification along with an excellent position on the very edge of The New Forest. The properties are all three bedroom bungalows, and each plot will measure between 0.1 acres and 0.14 acres. Pleasing features include oak framed porches, modern kitchen and bathroom fittings, oak internal doors, landscaped gardens and neutral decoration throughout. Register your interest now!

Wrenley is the left hand property of the three and offers the opportunity to purchase a brand new bungalow with an enviable corner position. The accommodation provides three bedrooms, a study/bedroom four, an ensuite to the master, a bathroom, a stylish kitchen/dining room, separate lounge and utility room. Outside, you will find driveway parking to the front, a garage, as well as landscaped gardens wrapping around the property to the front, side and rear. We strongly advise an internal viewing.

Council Tax band: TDB

Tenure: Freehold



1 Southward House
Dibden Purlieu SO45 4PT



T: 02380 844405

info@anthonyjamesproperties.co.uk

