



9 Solent Drive, Hythe  
£350,000



ANTHONY JAMES  
PROPERTIES





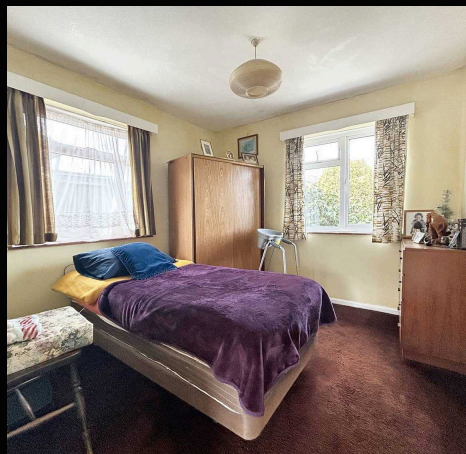
# 9 Solent Drive

Hythe, Southampton

Offered for sale with NO ONWARD CHAIN and situated within a sought after location. Internally there are three bedrooms, a lounge/dining room, a rear aspect kitchen and a shower room. Outside you will find a generous garden to the rear, ample driveway parking to the front and a detached single garage. Further features include UPVC double glazing and gas central heating. An internal viewing is strongly recommended to fully appreciate the potential on offer.

Council Tax band: D

Tenure: Freehold



Energy Efficiency Rating		Environmental Impact (CO <sub>2</sub> ) Rating	
Very energy efficient - lower running costs	Current	Very environmentally friendly - lower CO <sub>2</sub> emissions	Current
(92+) <b>A</b>		(91-93) <b>A</b>	
(81-91) <b>B</b>		(89-90) <b>B</b>	79
(65-80) <b>C</b>		(55-64) <b>D</b>	61
(55-64) <b>D</b>	61	(39-54) <b>E</b>	
(39-54) <b>E</b>		(21-38) <b>F</b>	
(21-38) <b>F</b>		(1-20) <b>G</b>	
(1-20) <b>G</b>			
Not energy efficient - higher running costs		Not environmentally friendly - higher CO <sub>2</sub> emissions	

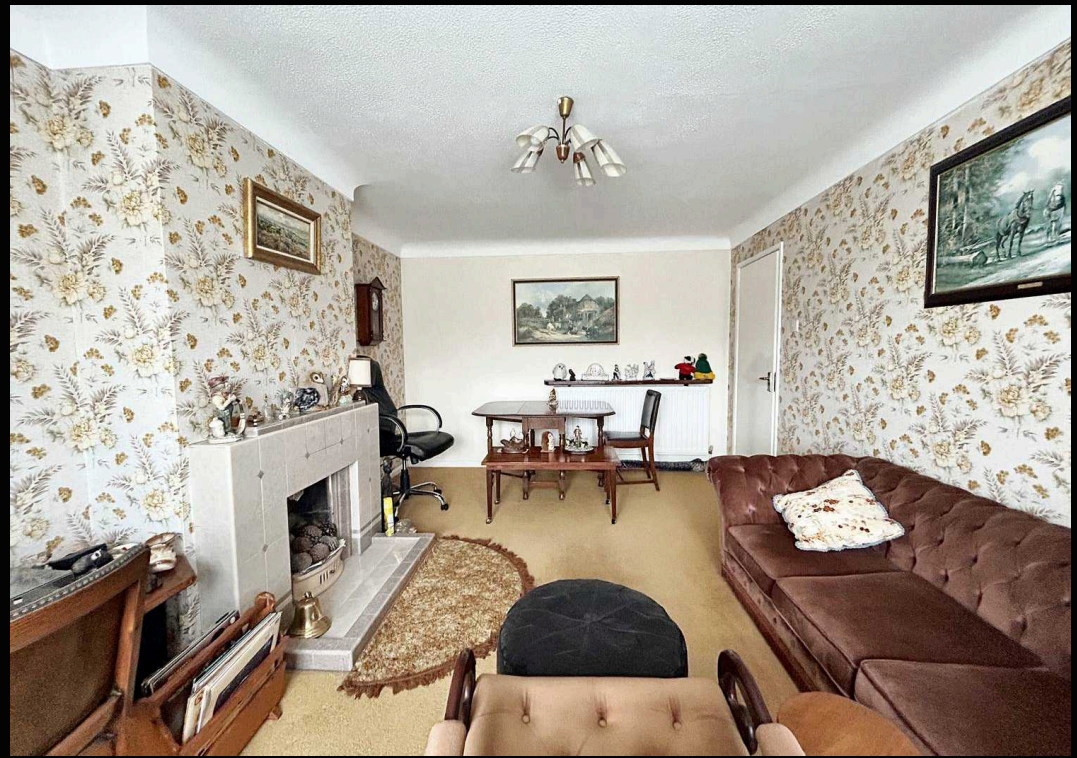


1 Southward House  
Dibden Purlieu SO45 4PT



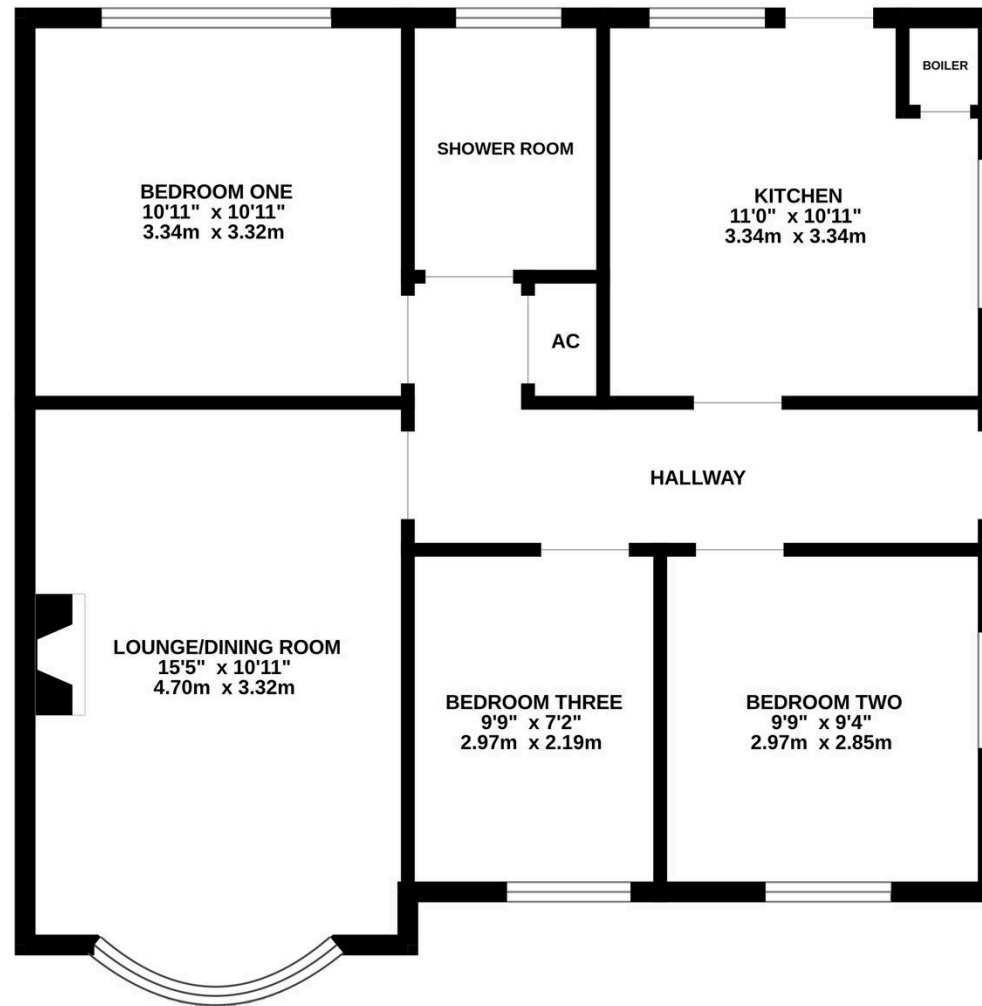
T: 02380 844405  
info@anthonyjamesproperties.co.uk







GROUND FLOOR  
700 sq.ft. (65.0 sq.m.) approx.



TOTAL FLOOR AREA : 700 sq.ft. (65.0 sq.m.) approx.

Whilst every attempt has been made to ensure the accuracy of the floorplan contained here, measurements of doors, windows, rooms and any other items are approximate and no responsibility is taken for any error, omission or mis-statement. This plan is for illustrative purposes only and should be used as such by any prospective purchaser. The services, systems and appliances shown have not been tested and no guarantee as to their operability or efficiency can be given.  
Made with Metropix ©2024