



Linden Lepe Road, Langley
£315,000



Linden Lepe Road

Langley, Southampton

An extended and recently refurbished 1920's mid terraced house, which is offered for sale with NO ONWARD CHAIN. Internally there are three bedrooms, a lounge, an open plan kitchen/dining room, a family room, a family bathroom and a ground floor cloakroom. Outside of the property you will find a large enclosed rear garden and driveway parking for 2 vehicles to the front. Further features include UPVC double glazing and gas central heating. An internal viewing is strongly recommended to fully appreciate the accommodation on offer.

Lepe Road is positioned close to the edge of The New Forest National Park and just a short drive from the local beaches at Lepe Country Park and Calshot. There are various amenities conveniently placed in Blackfield centre including schools, shops and a bus service to the surrounding areas including Hythe and Southampton. Many indoor and outdoor activities can be enjoyed at local sports centres and there is a golf course at neighbouring Dibden. Council Tax band: C

Tenure: Freehold



1 Southward House
Dibden Purlieu SO45 4PT

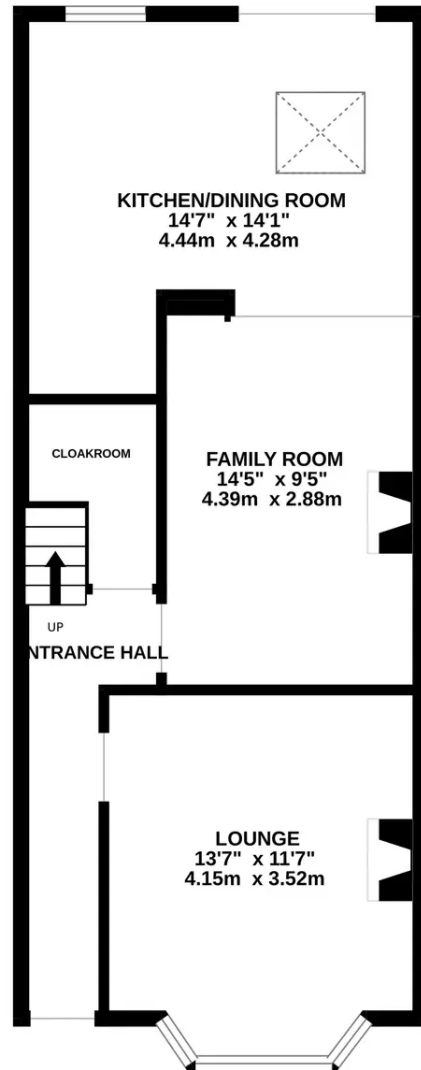


T: 02380 844405

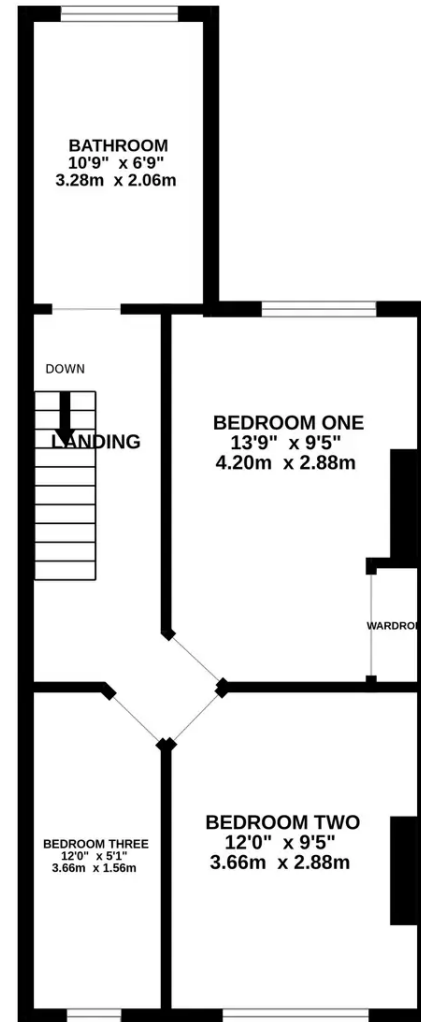
info@anthonyjamesproperties.co.uk



GROUND FLOOR
533 sq.ft. (49.5 sq.m.) approx.



1ST FLOOR
441 sq.ft. (40.9 sq.m.) approx.



TOTAL FLOOR AREA : 973 sq.ft. (90.4 sq.m.) approx.

Whilst every attempt has been made to ensure the accuracy of the floorplan contained here, measurements of doors, windows, rooms and any other items are approximate and no responsibility is taken for any error, omission or mis-statement. This plan is for illustrative purposes only and should be used as such by any prospective purchaser. The services, systems and appliances shown have not been tested and no guarantee as to their operability or efficiency can be given.

Made with Metropix ©2024