



6 Beechwood Way, Dibden Purlieu
£415,000


ANTHONY JAMES
PROPERTIES



6 Beechwood Way

Dibden Purlieu, Southampton

This modern and spacious four-bedroom detached home offers the perfect family accommodation. Offering downstairs WC, an open plan kitchen/diner, and a family-friendly layout, this property is ideal for those seeking a comfortable and convenient living space. Situated in close proximity to local schools, the home also benefits from gas fired central heating, double glazing, integral garage, and driveway parking, ensuring both practicality and ease of use.

Outside, the property features a low maintenance rear garden designed for relaxation and enjoyment. The garden is laid to patio paving and artificial lawn, with a raised sleeper border and timber fencing creating distinct sections. Accessible from either side of the home, the rear garden provides a peaceful retreat. Furthermore, the garage, with an electric roller door, offers additional storage space with power and lighting, while driveway parking for two cars completes this attractive outdoor space, making it perfect for both entertaining and day-to-day living.



Council Tax band: D

Tenure: Freehold



1 Southward House
Dibden Purlieu SO45 4PT

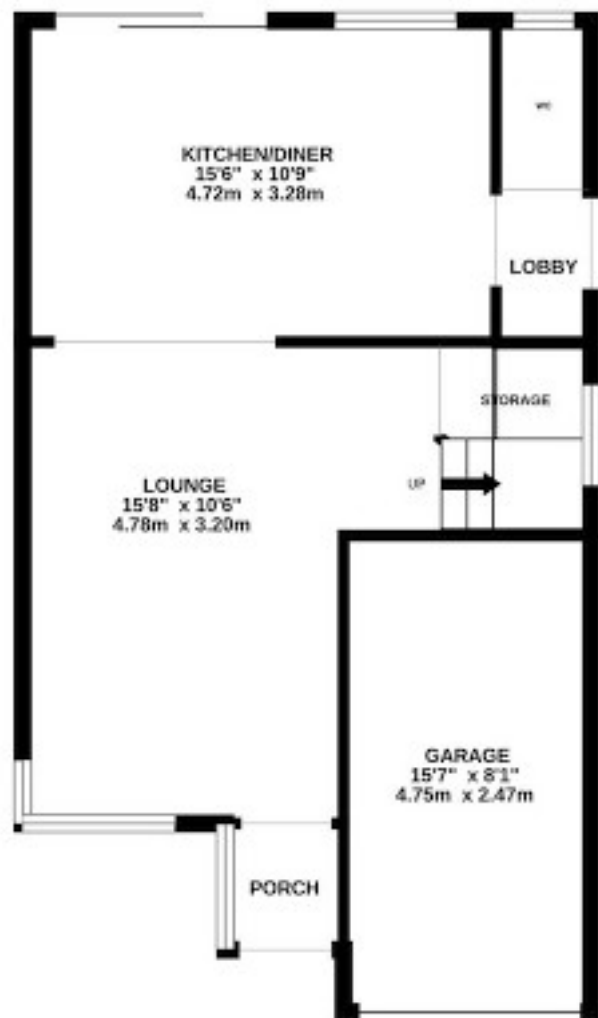


T: 02380 844405

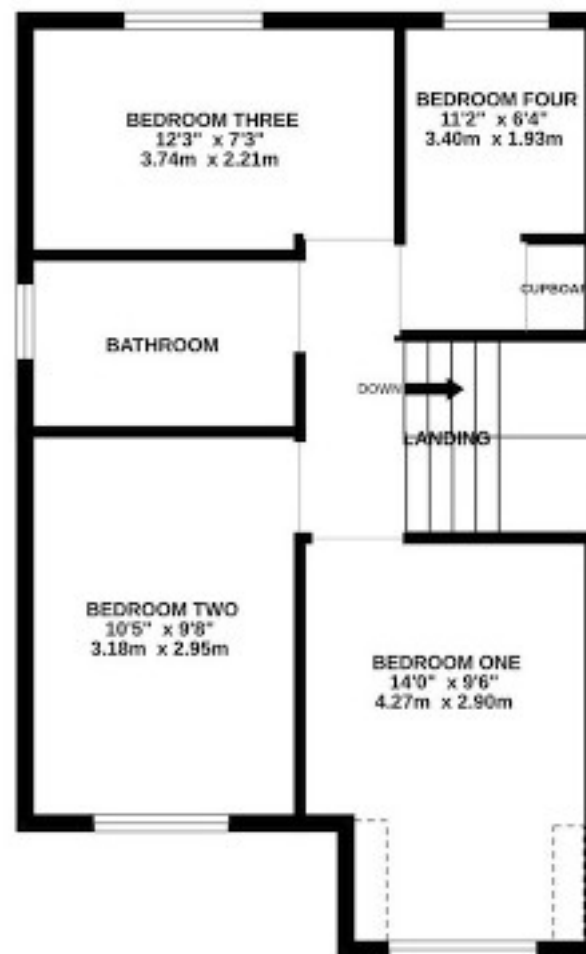
info@anthonyjamesproperties.co.uk



GROUND FLOOR



1ST FLOOR



Whilst every attempt has been made to ensure the accuracy of the floorplan contained here, measurements of doors, windows, rooms and any other items are approximate and no responsibility is taken for any error, omission or mis-statement. This plan is for illustrative purposes only and should be used as such by any prospective purchaser. The services, systems and appliances shown have not been tested and no guarantee as to their operability or efficiency can be given.

Made with Metropix 62024