



Meadow Lodge Forest Front, Hythe
£750,000



Meadow Lodge Forest Front

Hythe, Southampton

Nestled in the exclusivity of a serene woodland setting, this executive detached family home offers the epitome of comfortable and luxurious living. With a footprint that spans a generous 0.42-acre plot, this property boasts an impressive five bedrooms, three bathrooms, and a plethora of reception rooms that can easily accommodate various lifestyle needs. Surpassing the standard of modern living, the property has been thoughtfully designed to support disabled access and functionality, ensuring comfort and ease for all residents. Enhanced by the natural beauty of its surroundings, this residence is conveniently located opposite the picturesque Forest Front Nature Reserve, providing a tranquil backdrop for every-day living. The interior is further complemented by an open fire, gas-fired heating, double glazing throughout, and a first-floor balcony off the main bedroom, offering an ideal space for relaxation and reflection. With the potential for an annexe and an abundance of living space, this property truly exemplifies the essence of versatile and sophisticated family living and must be seen in person to be truly appreciated.

The allure of this exceptional property extends beyond its interior, with the promise of enchanting outdoor spaces to explore and enjoy. The vast 0.42-acre plot encompasses meticulously landscaped gardens that seamlessly blend into the natural woodland surroundings, culminating in a serene and private retreat. The rear garden, primarily laid to lawn, features an array of mature trees, plants, and



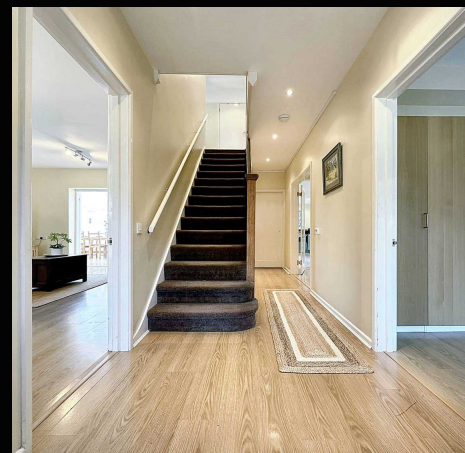
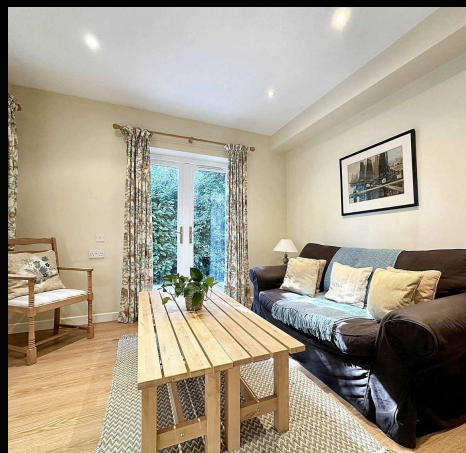
1 Southward House
Dibden Purlieu SO45 4PT

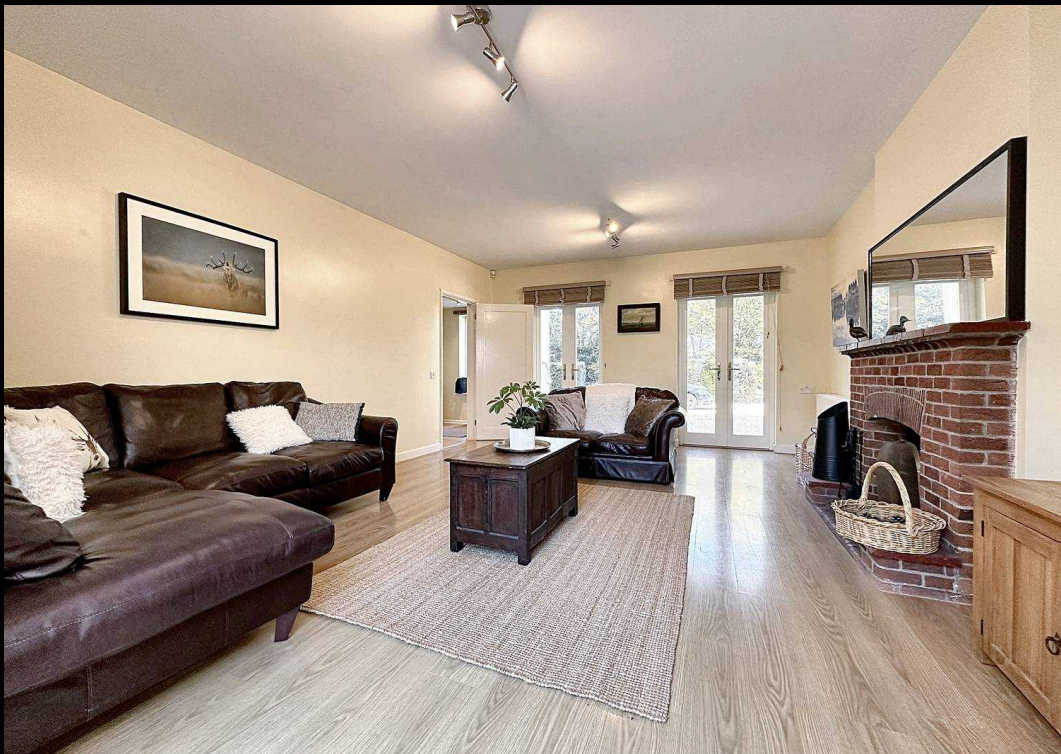


T: 02380 844405

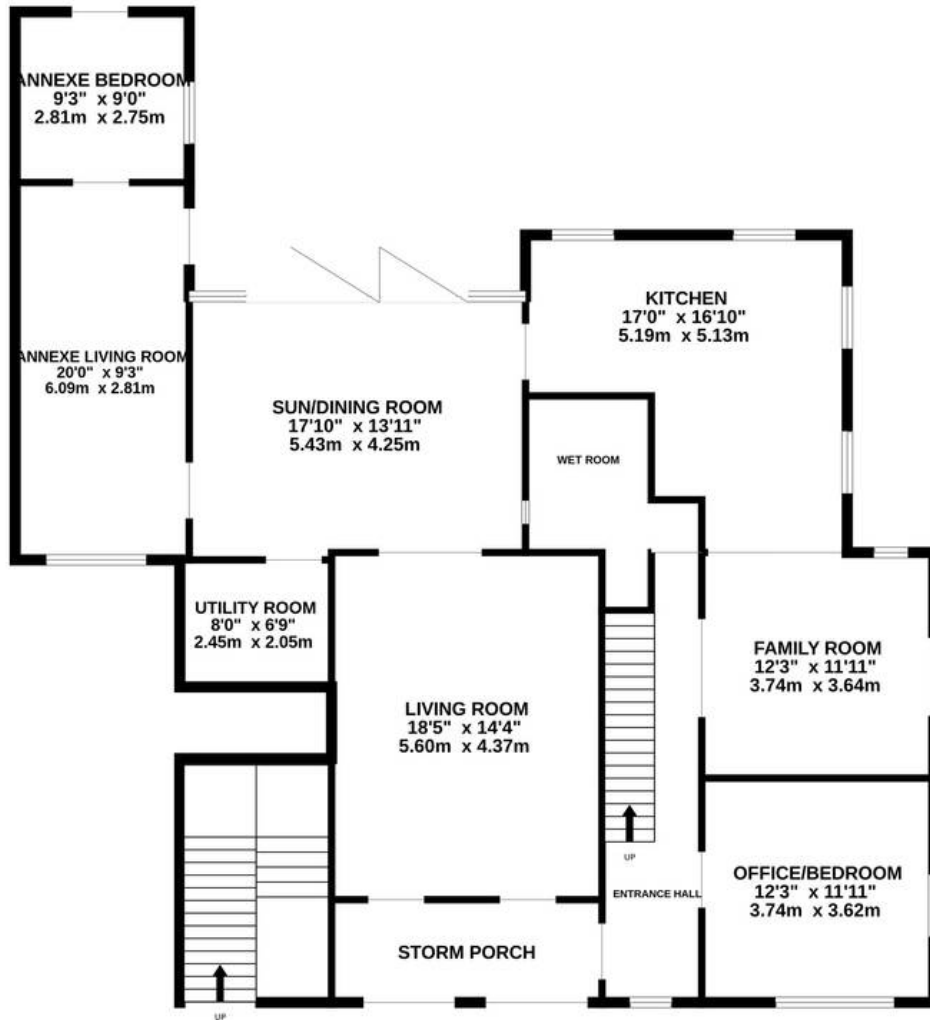
info@anthonyjamesproperties.co.uk

wraps around the property provides ample space

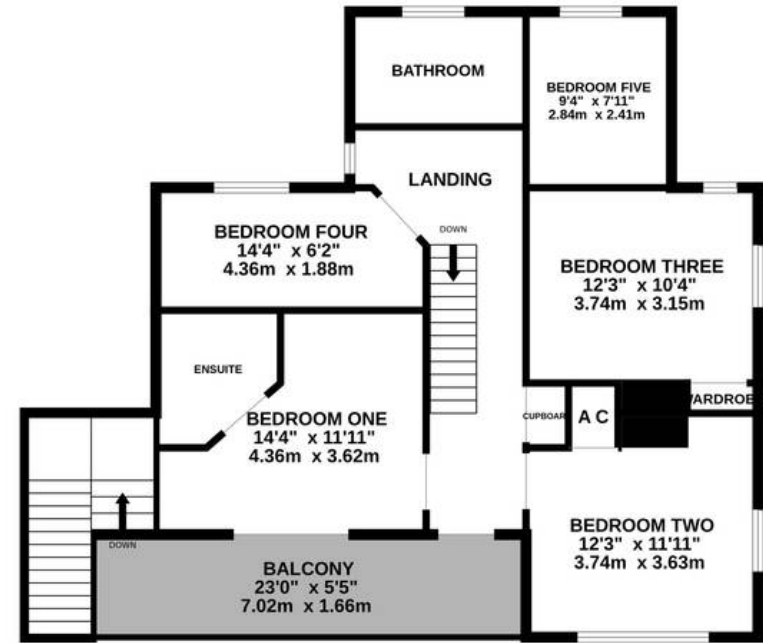




GROUND FLOOR
1716 sq.ft. (159.4 sq.m.) approx.



1ST FLOOR
864 sq.ft. (80.3 sq.m.) approx.



TOTAL FLOOR AREA : 2580 sq.ft. (239.7 sq.m.) approx.

Whilst every attempt has been made to ensure the accuracy of the floorplan contained here, measurements of doors, windows, rooms and any other items are approximate and no responsibility is taken for any error, omission or mis-statement. This plan is for illustrative purposes only and should be used as such by any prospective purchaser. The services, systems and appliances shown have not been tested and no guarantee as to their operability or efficiency can be given.