



30 Lunedale Road, Dibden Purlieu  
£499,950



ANTHONY JAMES  
PROPERTIES



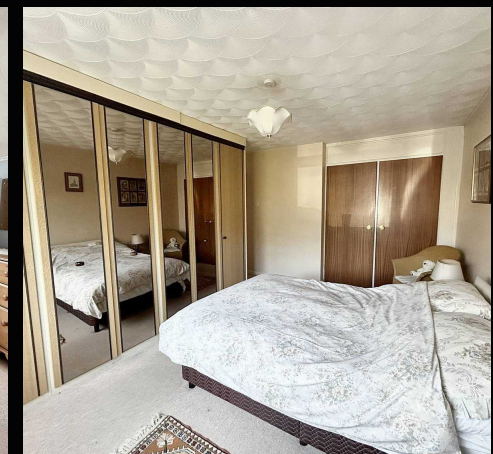
# 30 Lunedale Road

Dibden Purlieu, Southampton

Offered for sale with NO ONWARD CHAIN is this detached house offering great scope for improvement. Internally there are four double bedrooms, an open plan lounge/dining room, a well appointed kitchen, two shower rooms (both with WC's) and a separate WC. Outside of the property you will find a sunny rear garden and driveway parking to the front. Further features include UPVC double glazing and gas central heating. An internal viewing is strongly recommended to fully appreciate the accommodation on offer.

Council Tax band: D

Tenure: Freehold

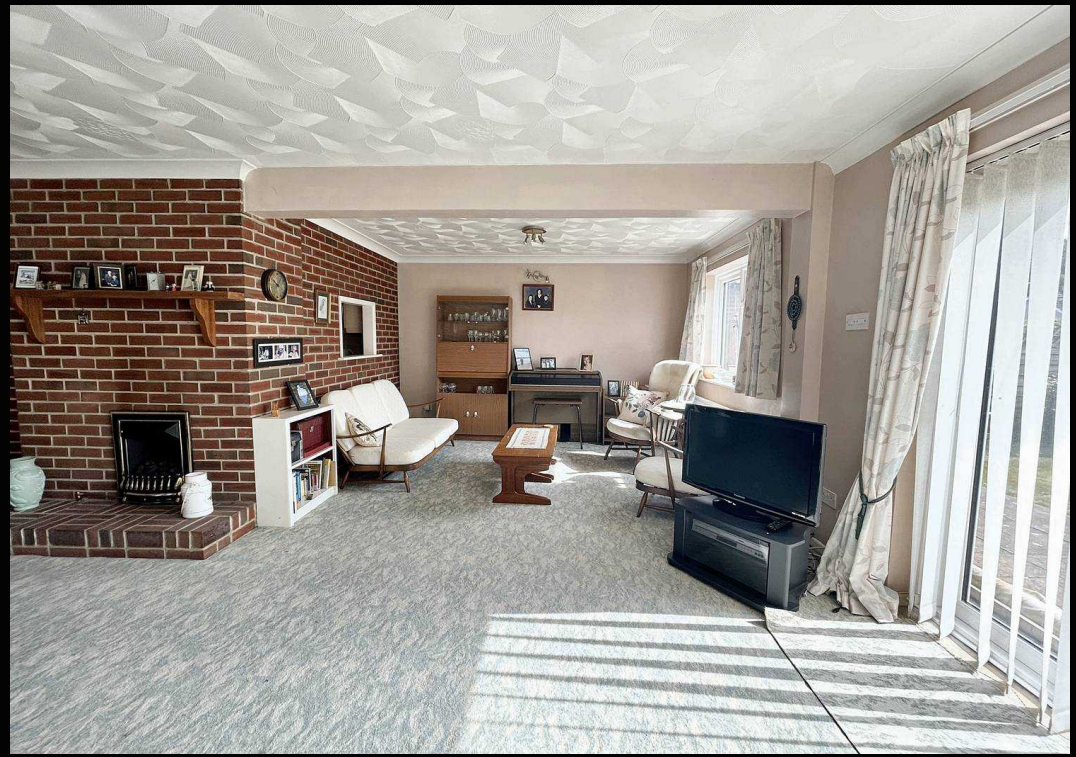


1 Southward House  
Dibden Purlieu SO45 4PT

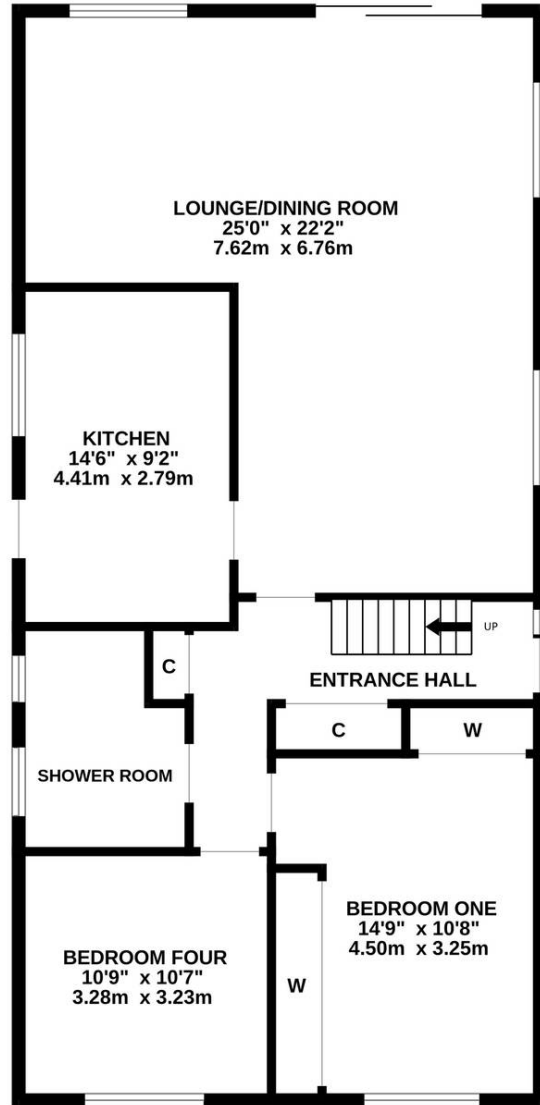


T: 02380 844405

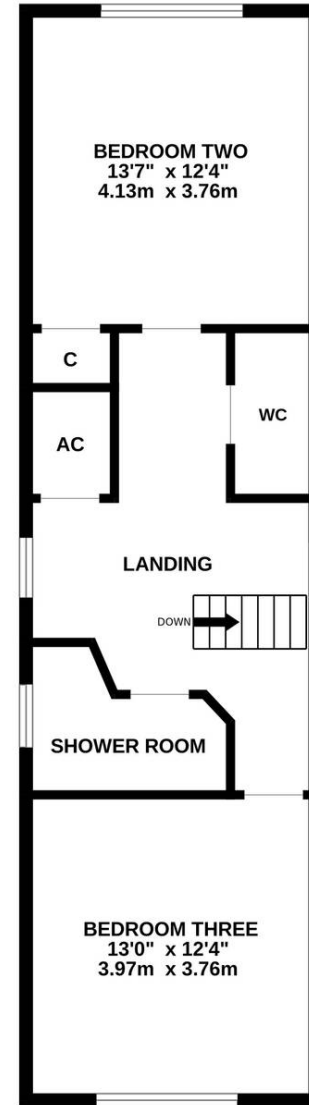
info@anthonyjamesproperties.co.uk



GROUND FLOOR  
1031 sq.ft. (95.8 sq.m.) approx.



1ST FLOOR  
573 sq.ft. (53.2 sq.m.) approx.



TOTAL FLOOR AREA : 1604 sq.ft. (149.0 sq.m.) approx.

Whilst every attempt has been made to ensure the accuracy of the floorplan contained here, measurements of doors, windows, rooms and any other items are approximate and no responsibility is taken for any error, omission or mis-statement. This plan is for illustrative purposes only and should be used as such by any prospective purchaser. The services, systems and appliances shown have not been tested and no guarantee as to their operability or efficiency can be given.  
Made with Metropix ©2024