



Cockleshells Lepe Road, Langley

Offers Over £450,000



ANTHONY JAMES
PROPERTIES



Cockleshells Lepe Road

Langley, Southampton

This charming four-bedroom detached house in Langley, Southampton, offers great potential for extension and modernisation. Situated in a non-estate location, this property boasts close proximity to the stunning beaches of Lepe Country Park and the idyllic New Forest National Park.

Featuring a spacious driveway accommodating three cars and a motorhome, this property is ideal for those seeking a tranquil retreat with convenient access to nature and outdoor activities. With three double bedrooms and one single bedroom, there is ample space for a growing family or those in need of a home office.

Located on Lepe Road, residents will benefit from easy access to local amenities in Blackfield centre, including schools, shops, and a bus service to nearby areas such as Hythe and Southampton. Additionally, recreational opportunities abound with nearby sports centres and a golf course in neighbouring Dibden.

This no chain sale presents a unique opportunity for buyers to create their dream home in a sought-after locale. Don't miss out on the chance to view this property and imagine the possibilities it holds.

Council Tax band: E

Tenure: Freehold



1 Southward House
Dibden Purlieu SO45 4PT

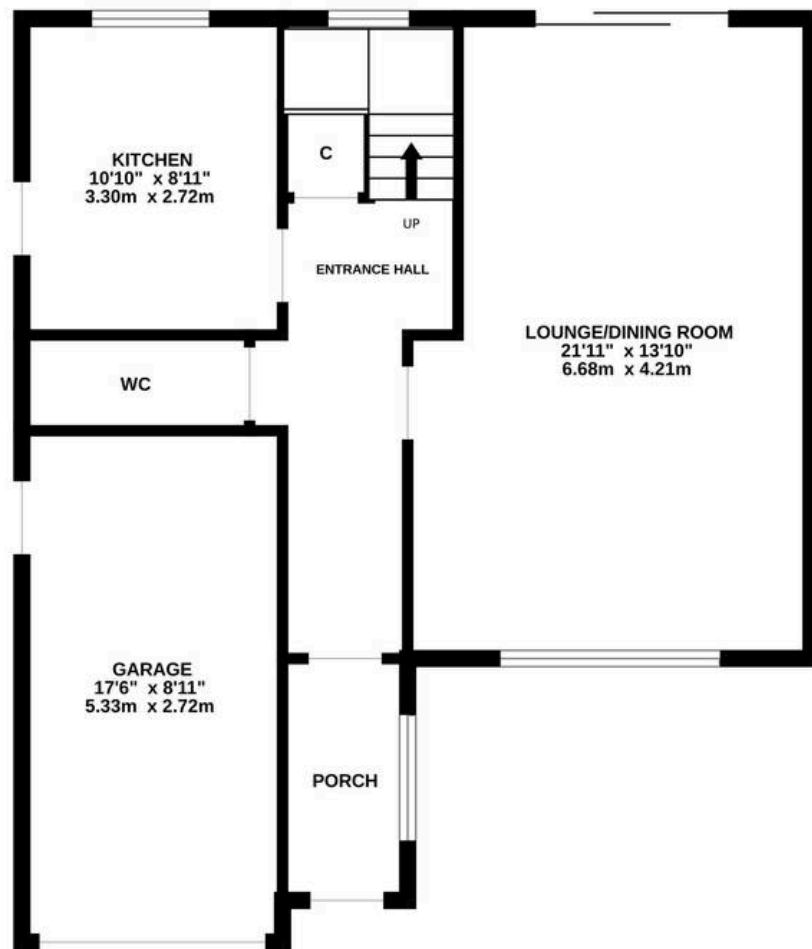


T: 02380 844405

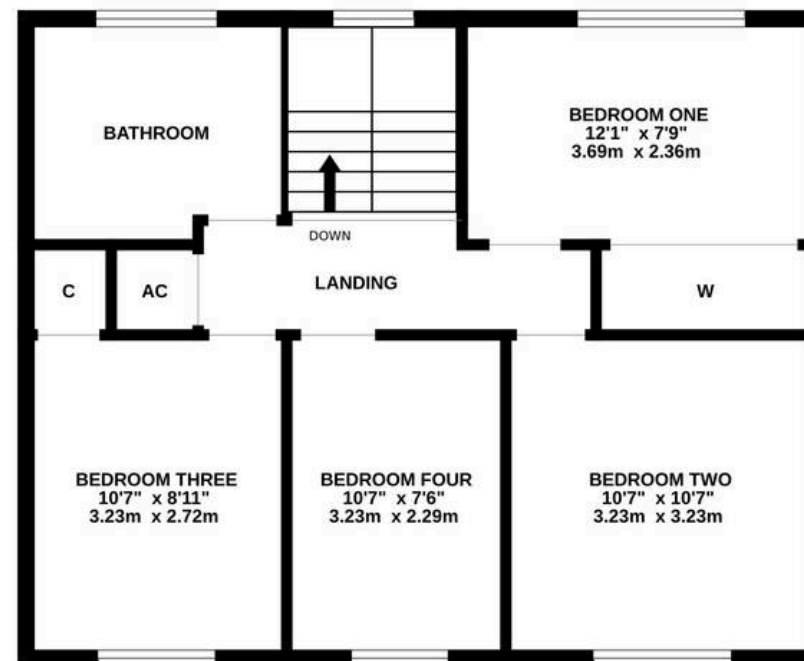
info@anthonyjamesproperties.co.uk



GROUND FLOOR
714 sq.ft. (66.3 sq.m.) approx.



1ST FLOOR
592 sq.ft. (55.0 sq.m.) approx.



TOTAL FLOOR AREA : 1306 sq.ft. (121.3 sq.m.) approx.

Whilst every attempt has been made to ensure the accuracy of the floorplan contained here, measurements of doors, windows, rooms and any other items are approximate and no responsibility is taken for any error, omission or mis-statement. This plan is for illustrative purposes only and should be used as such by any prospective purchaser. The services, systems and appliances shown have not been tested and no guarantee as to their operability or efficiency can be given.
Made with Metropix ©2024