

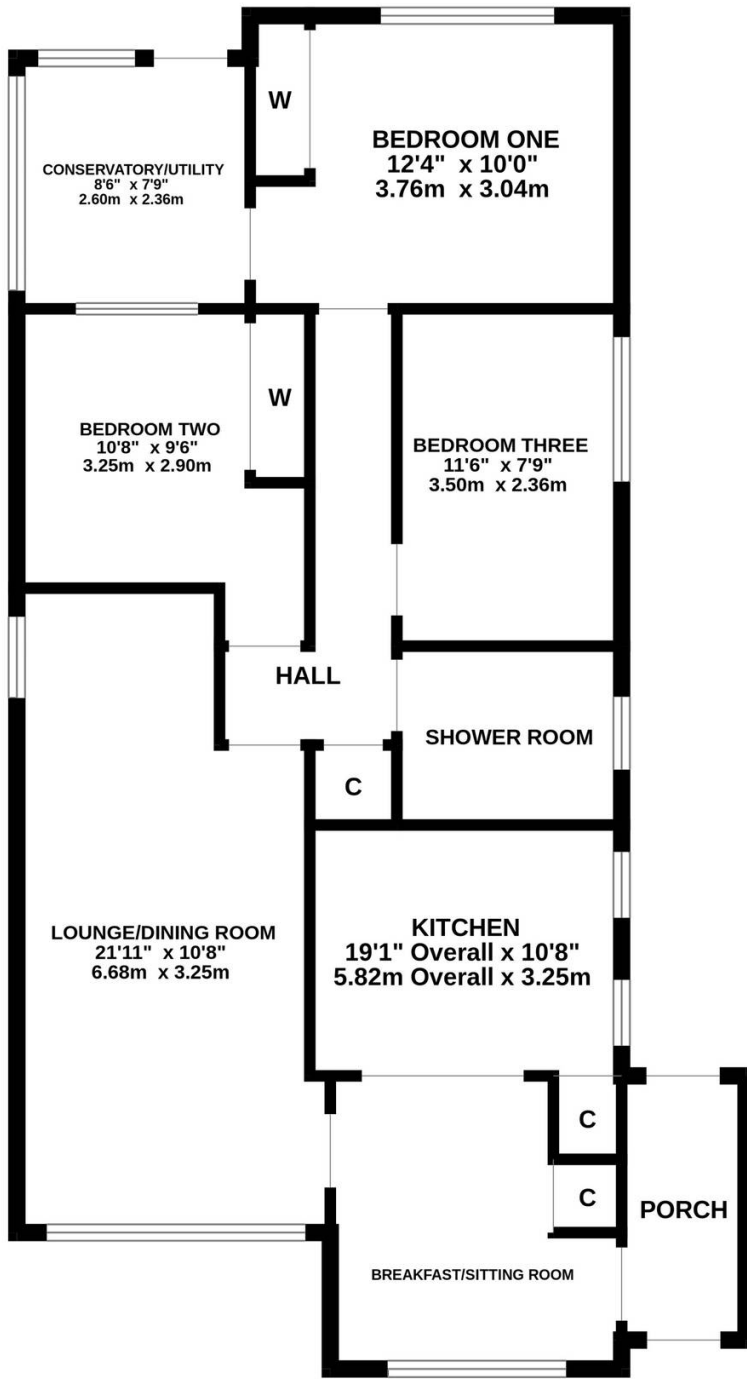


6 Curlew Drive, Hythe - SO45 3GA

£349,995 Freehold

Offered for sale with NO CHAIN, is this well maintained detached bungalow situated within a sought after and quiet location. Internally there are three generous bedrooms, a kitchen/breakfast room, an open plan lounge/dining room, a shower room and a conservatory/utility room. Outside of the property you will find well maintained front and rear gardens and a single garage. Further features include UPVC double glazing and gas central heating. An internal viewing is strongly recommended to fully appreciate the accommodation on offer.

GROUND FLOOR
924 sq.ft. (85.9 sq.m.) approx.



TOTAL FLOOR AREA : 924 sq.ft. (85.9 sq.m.) approx.

Whilst every attempt has been made to ensure the accuracy of the floorplan contained here, measurements of doors, windows, rooms and any other items are approximate and no responsibility is taken for any error, omission or mis-statement. This plan is for illustrative purposes only and should be used as such by any prospective purchaser. The services, systems and appliances shown have not been tested and no guarantee as to their operability or efficiency can be given.

Made with Metropix ©2024

You can include any text here. The text can be modified upon generating your brochure.



1 Southward House
Dibden Purlieu SO45 4PT



T: 02380 844405
info@anthonyjamesproperties.co.uk