



1 Butts Bridge Road, Hythe  
£345,000



# 1 Butts Bridge Road

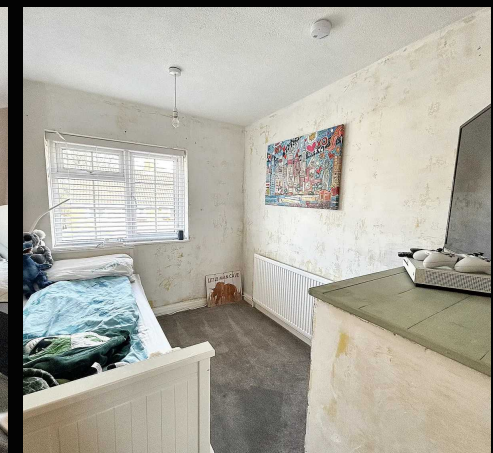
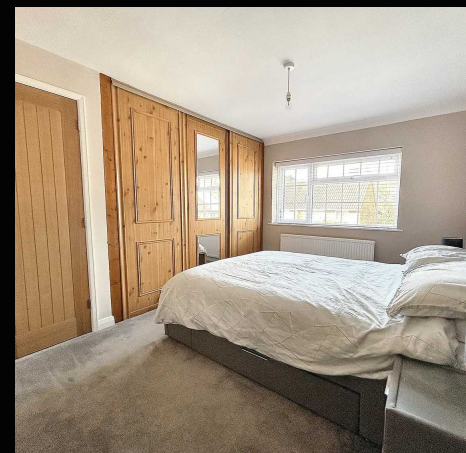
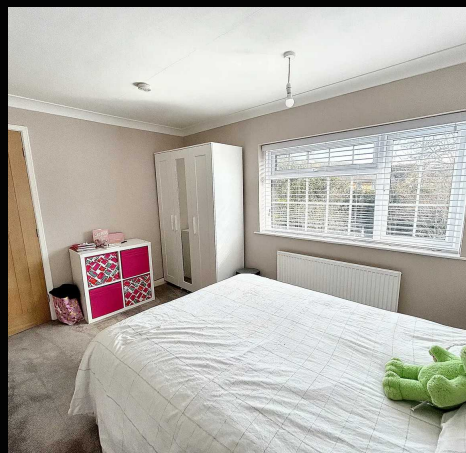
Hythe, Southampton

A beautifully presented semi detached house which has been thoughtfully refurbished over recent months. Internally there are three bedrooms, a lounge, an open plan kitchen/dining room, a conservatory, a utility room, a ground floor WC and a further family bathroom. Externally you will find driveway parking and an enclosed garden to the rear. Recent changes include oak doors throughout, new flooring and a Hive heating system. An internal viewing is strongly recommended to fully appreciate the accommodation on offer.

The property is positioned among an established residential area on the outskirts of both Hythe and Dibden Purlieu, meaning all of the amenities within the villages are in easy reach. This includes a variety shops, restaurants and pubs as well as travel links to surrounding areas, including a passenger ferry service from Hythe Pier to Southampton. In neighbouring Dibden you can find a supermarket, leisure centre and a golf course. The New Forest National Park, as well as the coastline, are both just a short drive away meaning many outside interests can be pursued.

Council Tax band: C

Tenure: Freehold



1 Southward House  
Dibden Purlieu SO45 4PT

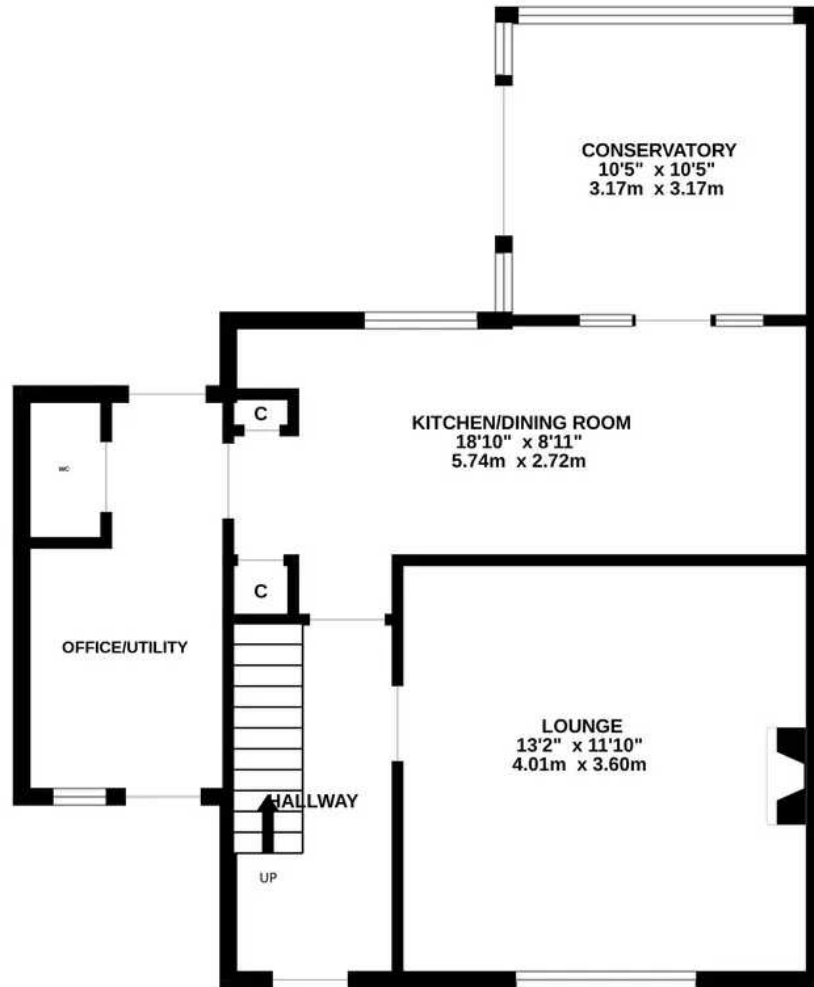


T: 02380 844405

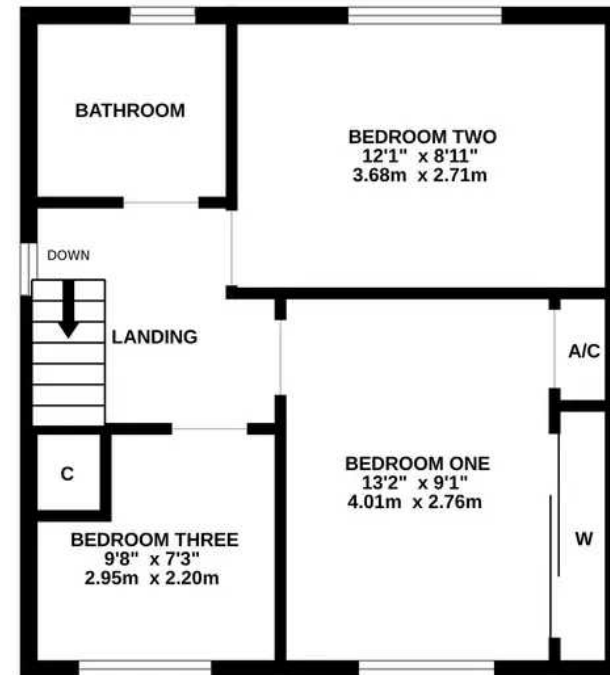
info@anthonyjamesproperties.co.uk



GROUND FLOOR



1ST FLOOR



Whilst every attempt has been made to ensure the accuracy of the floorplan contained here, measurements of doors, windows, rooms and any other items are approximate and no responsibility is taken for any error, omission or mis-statement. This plan is for illustrative purposes only and should be used as such by any prospective purchaser. The services, systems and appliances shown have not been tested and no guarantee as to their operability or efficiency can be given.  
Made with Metropix ©2023