



Kraysden Lea Road, Langley
£439,950



ANTHONY JAMES
PROPERTIES



Kraysden Lea Road

Langley, Southampton

This deceptively spacious detached house presents an ideal family home, set within an excellent location and is just a short walk from The New Forest National Park. The extended accommodation offers four bedrooms, a first-floor bathroom, and a ground-floor shower room. Further to this, the property boasts a kitchen/breakfast room, a lounge, and a dining room, complemented by gas central heating and double glazing. Outside you will find driveway parking, a single garage, and an enclosed rear garden. With its desirable features and prime setting an internal viewing of this charming home is strongly advised.

Council Tax band: TDB

Tenure: Freehold



1 Southward House
Dibden Purlieu SO45 4PT

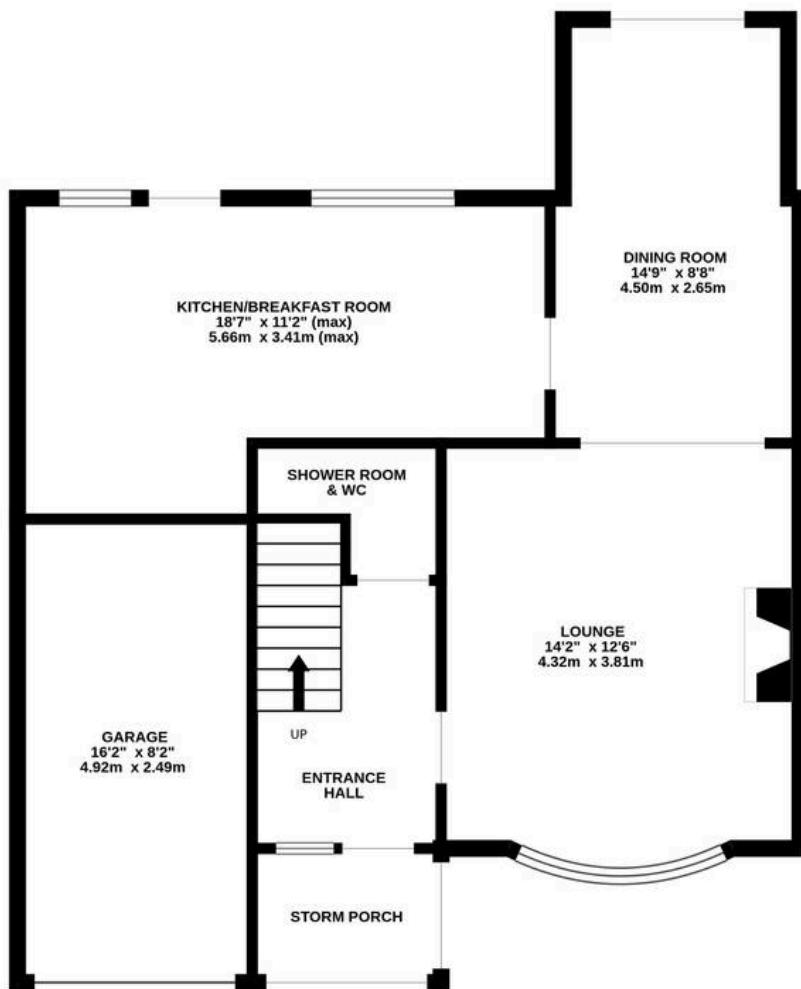


T: 02380 844405

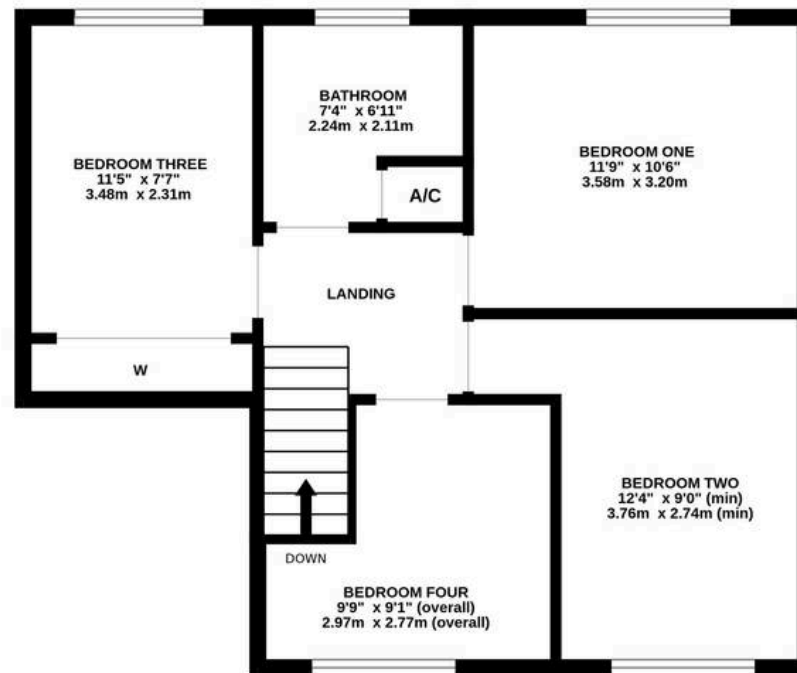
info@anthonyjamesproperties.co.uk



GROUND FLOOR



1ST FLOOR



Whilst every attempt has been made to ensure the accuracy of the floorplan contained here, measurements of doors, windows, rooms and any other items are approximate and no responsibility is taken for any error, omission or mis-statement. This plan is for illustrative purposes only and should be used as such by any prospective purchaser. The services, systems and appliances shown have not been tested and no guarantee as to their operability or efficiency can be given.
 Made with Metropix ©2024