



15 Lunedale Road, Dibden Purlieu  
£549,950



ANTHONY JAMES  
PROPERTIES



# 15 Lunedale Road

Dibden Purlieu, Southampton

Now available with NO ONWARD CHAIN!. Nestled within the desirable Dibden Purlieu Village, boasting a prime location on a highly requested road, sits this charming three bedroom bungalow on a generous 0.21-acre plot. A property that exudes potential, this well-presented home offers the perfect canvas for those seeking to create their dream residence with ample opportunity to extend substantially, subject to obtaining necessary planning permissions.

Upon arrival, you are greeted by a large frontage featuring a block-paved driveway providing parking space for multiple vehicles, a convenient feature for bustling households. As you step inside, the property unfolds to reveal a light and welcoming interior.

The accommodation comprises three bedrooms, each providing a peaceful retreat for rest and relaxation. The property benefits from a sunny aspect rear garden, perfect for soaking up the sun during the warmer months or enjoying al fresco dining and entertaining guests in a private and enclosed setting. The potential to extend up and out ensures that this property can adapt to suit the evolving needs of its inhabitants, providing a versatile living space that can be tailored to individual requirements.

Families will be delighted to discover that this property falls within the school catchment for Wildground Infants/Juniors and Applemore College, adding an additional layer of appeal for those with young children or those looking to establish roots

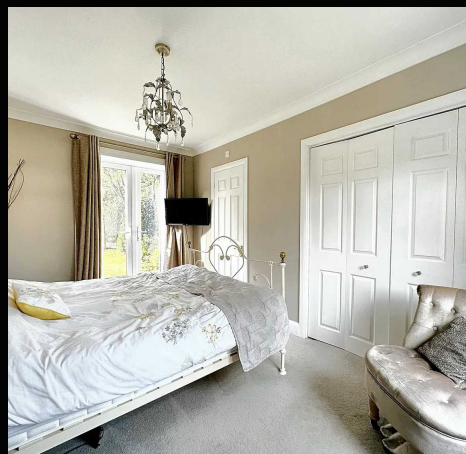


**1 Southward House**  
Dibden Purlieu SO45 4PT



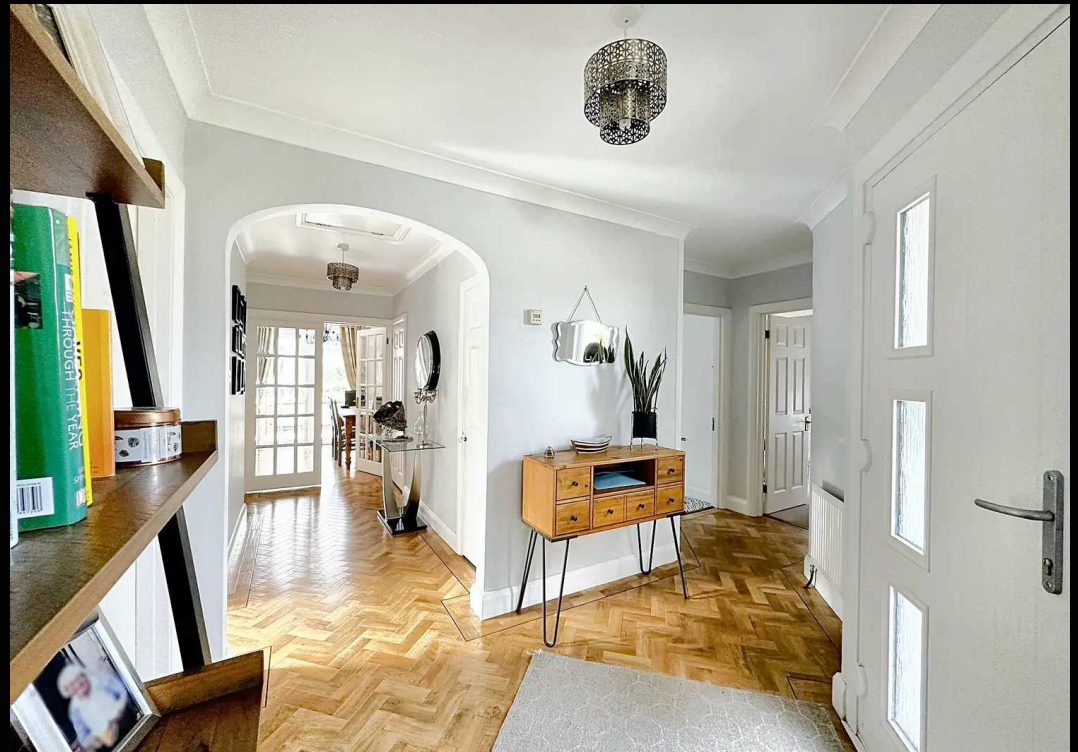
**T: 02380 844405**

info@anthonyjamesproperties.co.uk

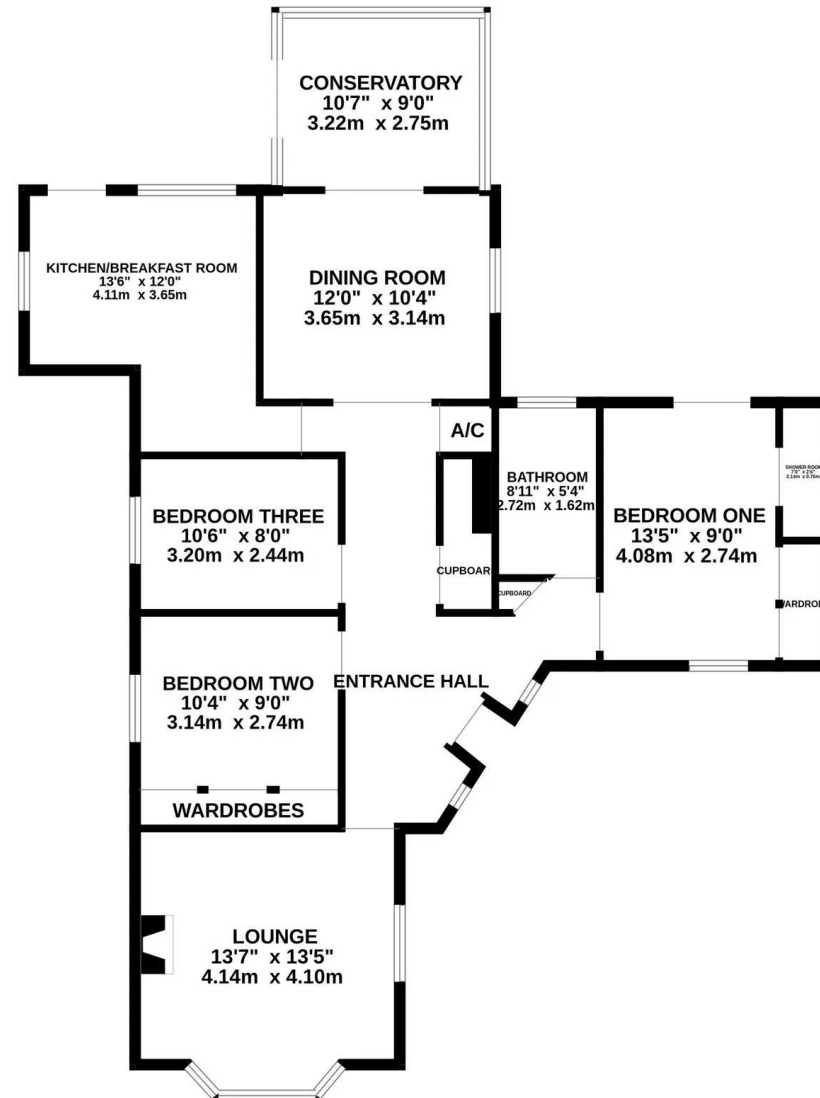


Score	Energy rating	Current	Potential
92+	A		
81-91	B		
69-80	C		76 C
55-68	D	61 D	
39-54	E		
21-38	F		
1-20	G		

In conclusion, this three bedroom bungalow



GROUND FLOOR  
1124 sq.ft. (104.5 sq.m.) approx.



TOTAL FLOOR AREA : 1124 sq.ft. (104.5 sq.m.) approx.

Whilst every attempt has been made to ensure the accuracy of the floorplan contained here, measurements of doors, windows, rooms and any other items are approximate and no responsibility is taken for any error, omission or mis-statement. This plan is for illustrative purposes only and should be used as such by any prospective purchaser. The services, systems and appliances shown have not been tested and no guarantee as to their operability or efficiency can be given.

Made with Metropix ©2023