

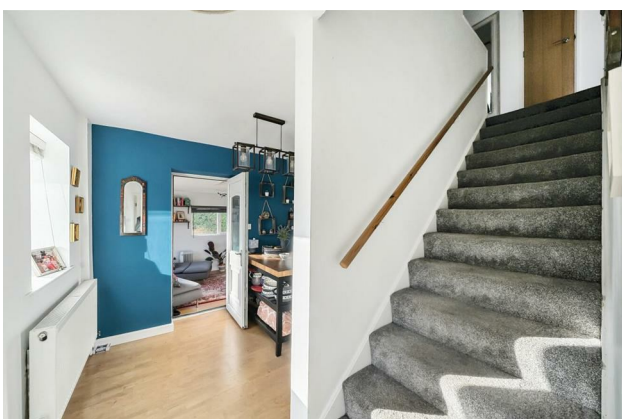
HUNTERS®

HERE TO GET *you* THERE

Bedford Grove, Cookridge, LS16

Guide Price £260,000

Property Images



HUNTERS[®]

HERE TO GET *you* THERE

Property Images



HUNTERS[®]

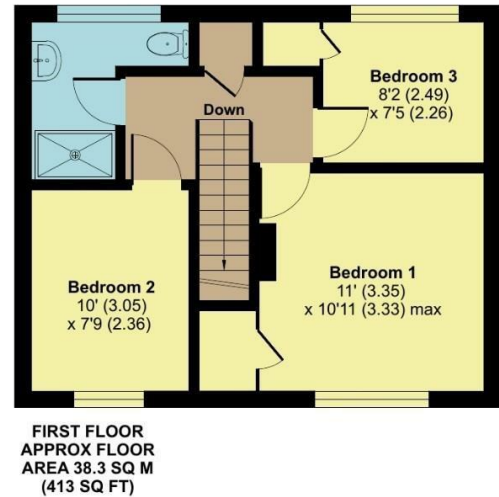
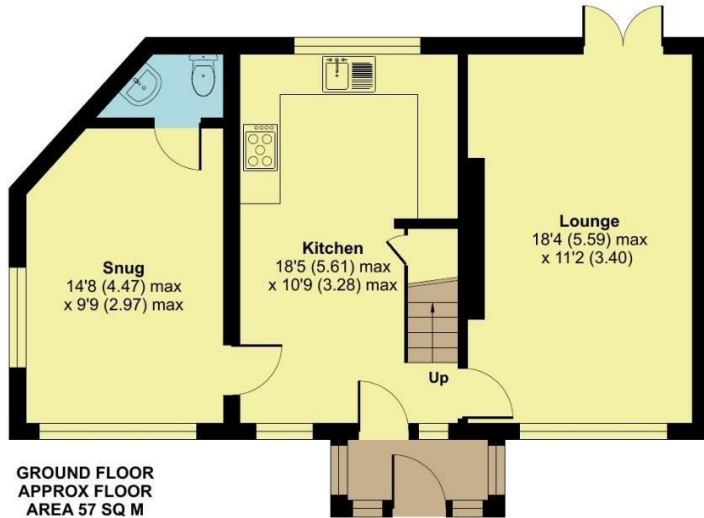
HERE TO GET *you* THERE

Property Images

Bedford Grove, Leeds, LS16

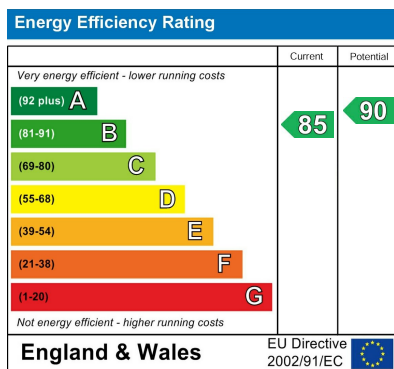
Approximate Area = 1026 sq ft / 95.3 sq m

For identification only - Not to scale

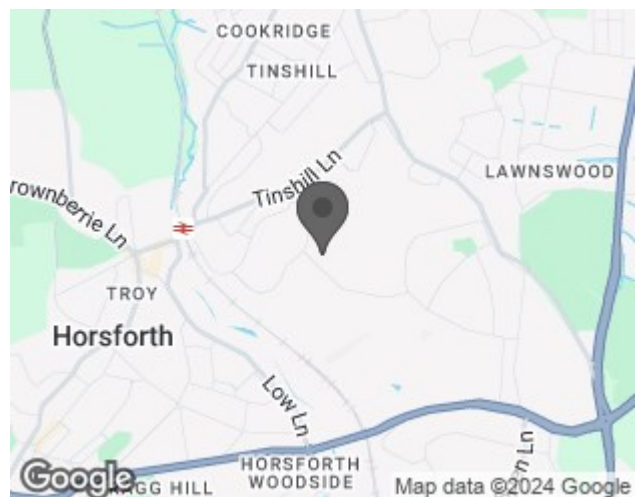


Floor plan produced in accordance with RICS Property Measurement Standards incorporating International Property Measurement Standards (IPMS2 Residential). © rnhcom 2024. Produced for Hunters Property Group. REF: 1191647

EPC



Map



Details

Type: House - Semi-Detached Beds: 3 Bathrooms: 1 Receptions: 2 Tenure: Freehold

Summary

Discover Bedford Grove, a beautifully presented, move-in-ready extended semi-detached home that offers three bedrooms in the highly sought-after location of Cookridge. Perfectly positioned close to local bus and train links, excellent schools, and a range of amenities, this property is ideal for those seeking both convenience and comfort.

Key Features:

- Fully modernised by the current vendor, ensuring a contemporary and stylish living space located on good size corner plot.
- Front Porch offering great space for cloakroom storage.
- Spacious lounge / diner with dual aspect window and double doors to the rear giving access to the rear patio and garden, allowing plenty of natural light in.
- Open-plan kitchen/breakfast room in a neutral Shaker style with ample base and eye-level units and generous work surfaces, offering a great space for entertaining.
- Extended second reception room offering versatility to suit your needs and benefitting from having a downstairs W.C.
- Three well-proportioned bedrooms provide comfortable living spaces for the family.
- Modern sleek house shower room with walk in shower double shower, sink with vanity unit and W.C
- Driveway and good size front lawn garden with hedge boundary. Garden to the rear is fully enclosed with side gate and hedge boundaries with under shelter patio and lawn area.
- Leased solar panels for energy efficiency

This home is an excellent choice for first-time buyers, offering a modern, move-in-ready space on a large corner plot.

Call our friendly team today to arrange your viewing!

Features

- CHAIN FREE • EXTENDED THREE BEDROOM SEMI-DETACHED • SPACIOUS LOUNGE • DOWNSTAIRS WC • SNUG ROOM • DRIVEWAY • COUNCIL TAX BAND:- A • EPC RATING:- B