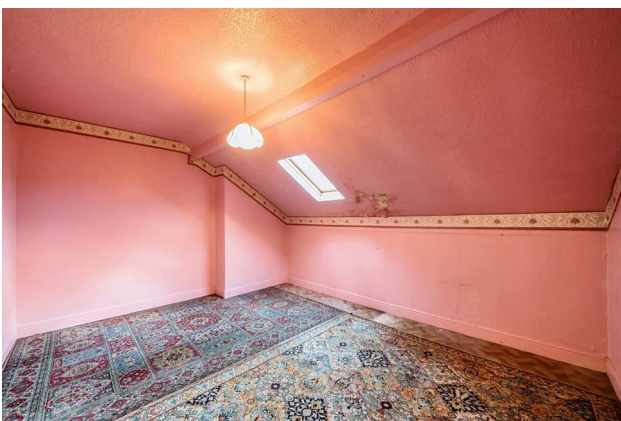


HUNTERS®

HERE TO GET *you* THERE

Heathfield Terrace, LS6

£350,000



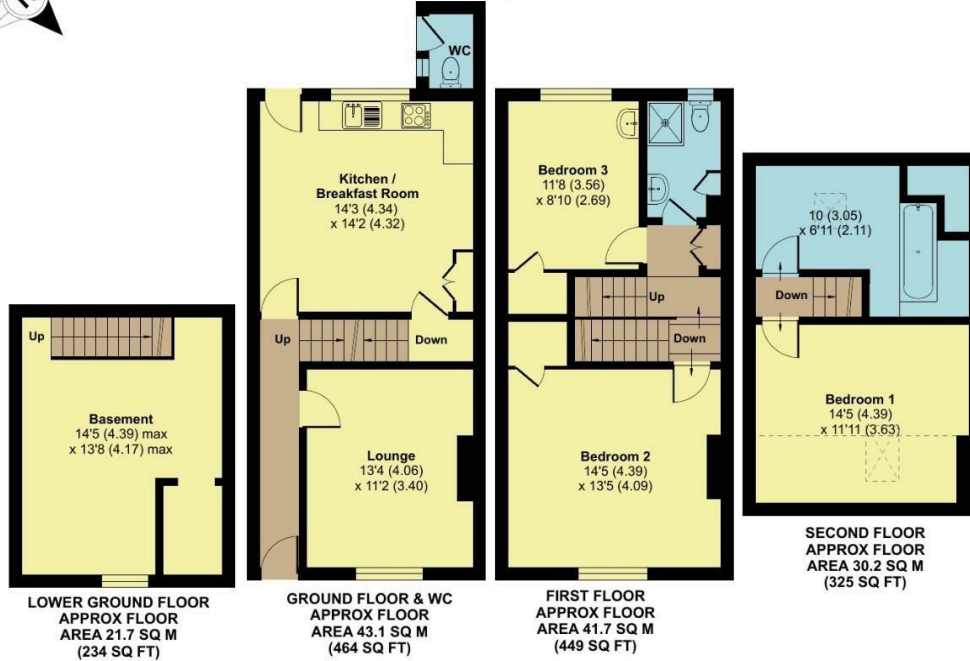
HUNTERS[®]

HERE TO GET *you* THERE



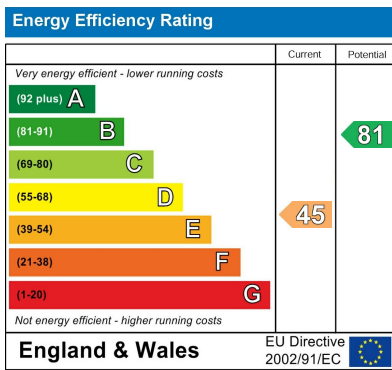
Heathfield Terrace, Leeds, LS6

Approximate Area = 1392 sq ft / 129.3 sq m
 Limited Use Area(s) = 65 sq ft / 6 sq m
 WC = 15 sq ft / 1.4 sq m
 Total = 1472 sq ft / 136.7 sq m
 For identification only - Not to scale*



Floor plan produced in accordance with RICS Property Measurement Standards incorporating International Property Measurement Standards (IPMS2 Residential). © nichcom 2024. Produced for Hunters Property Group. REF: 1176533

EPC



Map



This rare-to-market gem is a four-bedroom, mid-stone terrace property nestled in a secluded Headingley location. Brimming with period charm, this beautiful home offers a unique opportunity to modernise and personalise, enhancing its value while preserving its historic character. Spanning four levels, the property features a spacious kitchen-diner with direct access to a rear yard (and outside W.C.), a generously sized living room showcasing period features, and a versatile basement with ample storage and potential for conversion. The upper floors house four generous bedrooms, along with a shower room.

Located just 0.3 miles from central Headingley—a short 7-minute walk for most people—this home offers easy access to an array of shops, bars, and cafes, providing a vibrant, sociable lifestyle. Commuting to Leeds city centre is convenient via Otley Road and public transport, making this a highly desirable property in a prime location. If you like your Cricket and Rugby, the famous Headingley stadiums are only a walk away! If you're feeling active, the Village Gym is nearby as well as Beckett Park and Meanwood Park, for those relaxing afternoons spent outdoors.

This delightful property, cherished by its owner for many years, now presents a superb opportunity to craft a truly special home, blending modern touches with timeless period charm. Situated on a quieter, residential street in a more peaceful part of Headingley, this home offers the perfect balance of tranquility and convenience. With everything that Headingley has to offer just around the corner, you'll enjoy easy access to urban lifestyle on offer, while still enjoying a serene, tucked-away location.

This unique property offers an exceptional chance to create a dream home in a highly sought-after area. Don't miss out—contact us today to arrange a viewing!