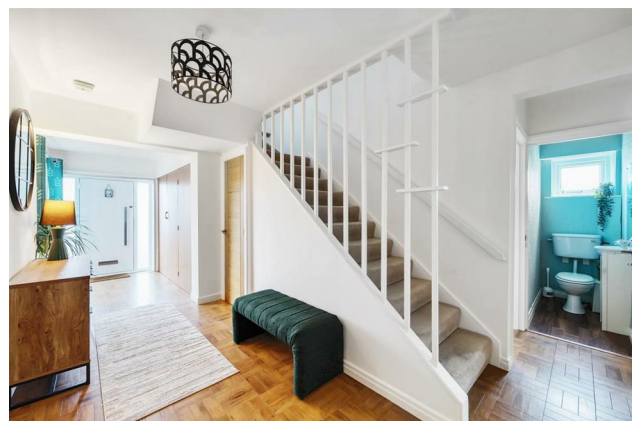


HUNTERS®

HERE TO GET *you* THERE

Scotland Way, Horsforth, Leeds, LS18

Guide Price £600,000



HUNTERS®

HERE TO GET *you* THERE



Floorplan

Scotland Way, Horsforth, Leeds, LS18

Approximate Area = 1666 sq ft / 154.7 sq m

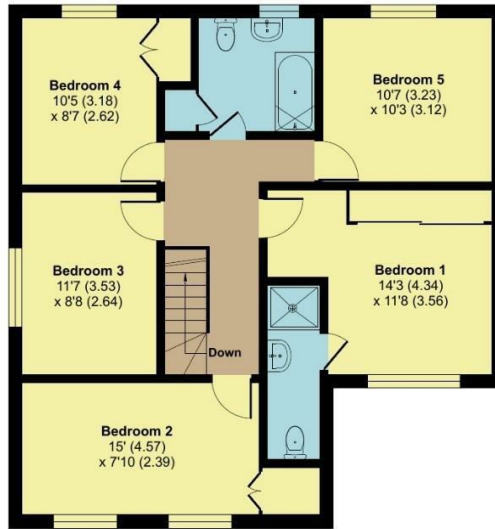
Garage = 270 sq ft / 25 sq m

Total = 1936 sq ft / 179.7 sq m

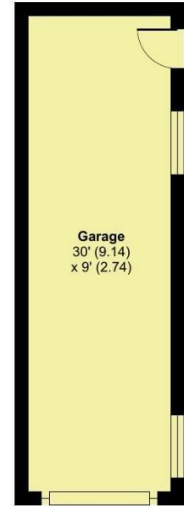
For identification only - Not to scale



GROUND FLOOR
APPROX FLOOR
AREA 77.2 SQ M
(832 SQ FT)



FIRST FLOOR
APPROX FLOOR
AREA 77.4 SQ M
(834 SQ FT)



GARAGE
APPROX FLOOR
AREA 25 SQ M
(270 SQ FT)

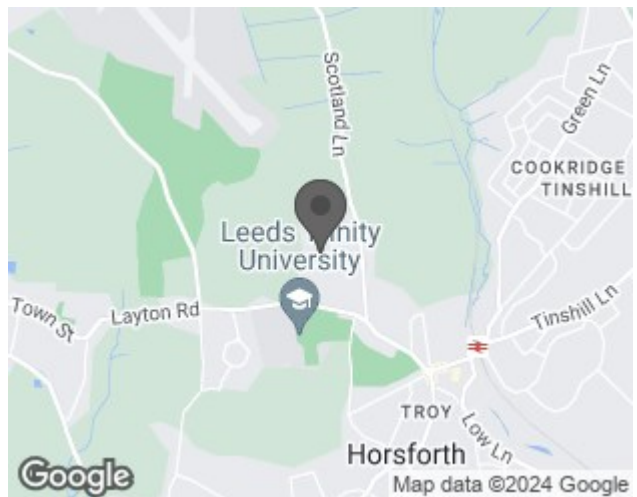


Floor plan produced in accordance with RICS Property Measurement Standards incorporating International Property Measurement Standards (IPMS2 Residential). © nichecom 2024. Produced for Hunters Property Group. REF: 1089398

EPC

| Energy Efficiency Rating | | Current | Potential |
|---|-------------------------|---------|-----------|
| Very energy efficient - lower running costs | | | |
| (92 plus) A | | | |
| (81-91) B | | | |
| (69-80) C | | 69 | 79 |
| (55-68) D | | | |
| (39-54) E | | | |
| (21-38) F | | | |
| (1-20) G | | | |
| Not energy efficient - higher running costs | | | |
| England & Wales | EU Directive 2002/91/EC | | |

Map



Welcome to your woodland oasis! This captivating property boasts 5 double bedrooms, including a master bedroom with an en-suite. There's a 30-foot detached garage, ample driveway space, and beautiful views... Don't miss out on this opportunity to own your dream retreat!