



Marshall Street, Carnaby, W1F  
*£950 pw*

› 3 Bedrooms › 2 Bathroom › Unfurnished

**TAVISTOCKBOW**  
RESIDENTIAL



- › Three bedrooms
- › Two bathrooms (one en-suite)
- › Fourth Floor (with direct lift access)
- › Wooden floors throughout
- › Open plan
- › Unfurnished
- › Large roof terrace
- › Moments from Kingly Court
- › Short walk to Piccadilly Circus and Oxford Circus
- › Available immediately

Situated on the 4th (top) floor of a modern residential building moments from Carnaby Street, this contemporary three bedroom apartment features an open plan reception room with views to Marshall Street, three quiet double bedrooms and one large bathroom and one en-suite shower room. Available immediately on an unfurnished basis.





### WHAT WE LOVE

Kingly Court and all its fantastic restaurants is moments away  
Tranquil Golden Square is a couple of minutes walk away  
Inko Nito is seconds from the apartment - amazing Japanese food  
Beautifully bright and spacious apartment  
Berwick Street food market is moments away.

### WHAT YOU NEED TO KNOW

Direct lift access  
Double glazed windows  
One bathroom and one shower room  
Built in storage in all three bedrooms  
24 hour security close by.



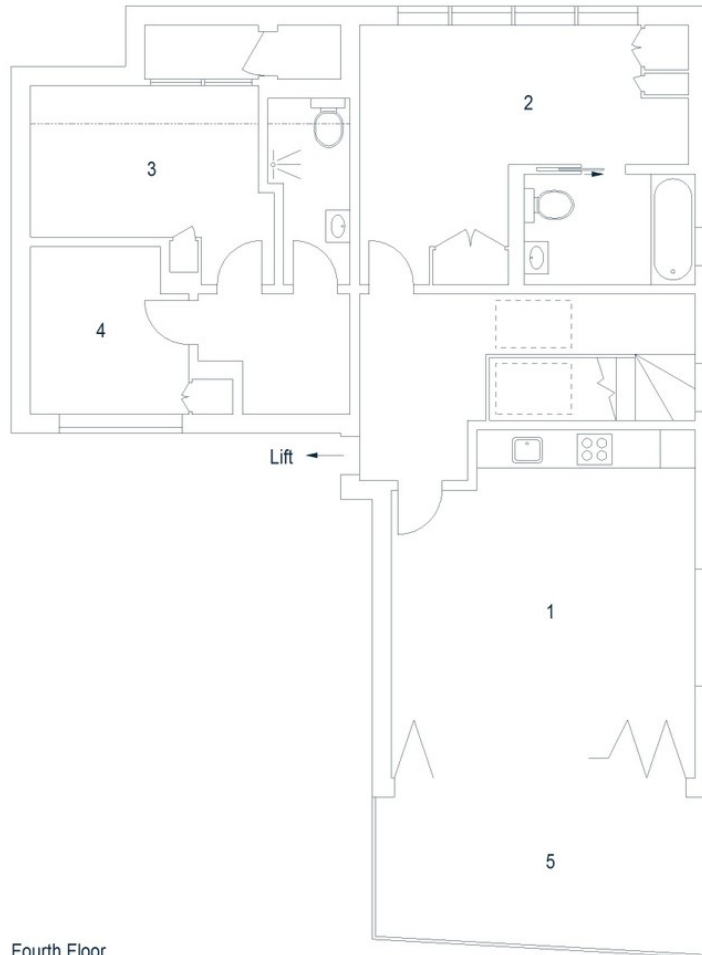
# Floorplan

Marshall Street, W1

Approximate Gross Internal Area 95 sq m / 1023 sq ft

 Under 1.5m head height

- 1 Kitchen / Reception Room  
5.49 x 4.82M  
18' x 15'10"
- 2 Bedroom  
5.21 x 4.11M  
17'1" x 13'6"
- 3 Bedroom  
4.06 x 3.56M  
13'4" x 11'8"
- 4 Bedroom  
3.27 x 2.67M  
10'9" x 8'9"
- 5 Roof Terrace  
5.30 x 2.50M  
17'4" x 8'2"

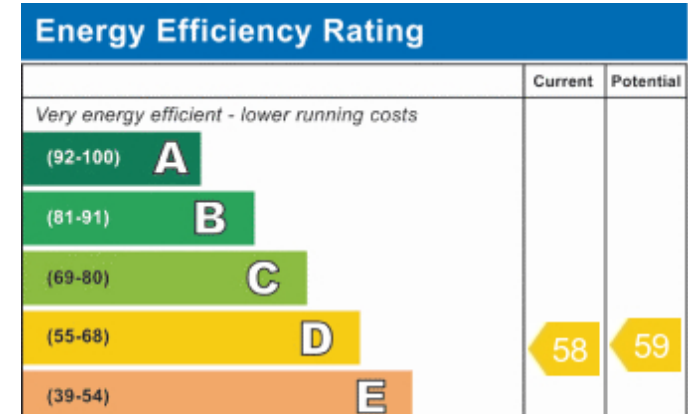


Third Floor

Fourth Floor

Floor Plan produced for Tavistock Bow by Mays Floorplans ©. Tel 020 3397 4594  
Illustration for identification purposes only, not to scale.

# EPC






## About Us

Tavistock Bow is an independent residential agency based in Covent Garden. We are niche, boutique, creative, knowledgeable, professional and approachable. We love what we do and that's why we do it.

## Contact Us

- a.** 31 Long Acre, London, WC2E 9LA
- t.** 020 7477 2177
- e.** hello@tavistockbow.com
- w.** tavistockbow.com

-  /tavistockbow
-  /tavistockbow
-  @tavistockbow



**TAVISTOCKBOW**  
RESIDENTIAL