

**For Rent**



## People Make Places



**Russell Street, Covent Garden WC2**

1 bedroom | 495 sq ft

£800 pw





A stunning interior designed, one bedroom apartment moments from Covent Garden Piazza. Finished with modern fittings mixed with period features, there is an L-shaped kitchen/reception room, a double bedroom with plentiful storage and a modern shower room. Available mid January, furnished.

#### What you need to know

- One double bedroom
- One shower room
- Second floor, walk-up
- Open plan kitchen/reception room
- Original wood panelling
- Interior designed furniture
- Concierge services included
- Feature fireplace
- Available mid January
- Close to both Covent Garden & Holborn stations



**Russell Street, Covent Garden WC2**





### Overview

A thoughtfully designed one bedroom apartment situated moments from Covent Garden Piazza forming part of the Covent Garden Estate, which is managed to the highest standard. On the second floor, walk-up, of a period building, this stunning apartment mixes heritage features like wood panelling and striking fireplaces with a contemporary interior. A dining area creates a natural divide between the open plan kitchen and living area, while the bedroom features fitted wardrobes and includes a desk. The shower room is modern in style while the furniture has been carefully curated to create an overall luxurious look.



Russell Street leads to the Piazza and historic Market Building, playing host to a variety of luxury retail brands including Ralph Lauren, Sandro and Hackett, with others such as Apple, Glossier, Chanel and Dior in the immediate vicinity. Tenants on the Covent Garden Estate benefit from complimentary membership of the Covent Garden Lifestyle Concierge service, helping take the stress out of everyday life. Covent Garden (Piccadilly Line) is the closest tube station, while Holborn (Central and Piccadilly Lines) and Charing Cross (Bakerloo and Northern Lines) are also within walking distance.

The apartment is available in January on a furnished basis. Subject to contract and satisfactory references, the landlord offers a one to three-year lease with a mutual rolling six-month break clause. Westminster Council tax band: F.

**Russell Street, Covent Garden WC2**



# People Make Places

London is a collection of inspiring urban villages and one of the most exciting places in the world to live, work & play.

We work with both property owners and their occupiers, sharing the story of these vibrant neighbourhoods, conveying the unique soul & energy to future custodians, the people who'll keep them buzzing.

And unlike many real estate businesses we're not just about buildings, because streets & buildings don't make a neighbourhood.

We're about building relationships, because **people make places**.

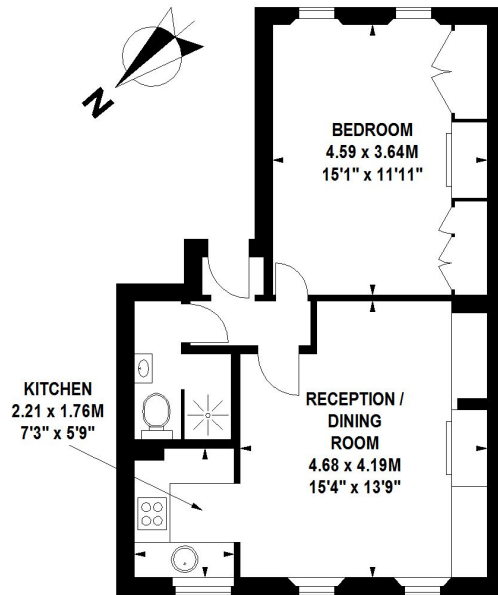
MISINTERPRETATION ACT (COPYRIGHT) DISCLAIMER: Tavistock Bow Ltd for themselves and for the vendor(s) of this property whose agents they are, given notice that: 1. These particulars do not constitute, not constitute any part of, an offer or contract. 2. None of the statements contained in these particulars as to the property are to be relied on as statements or representations of fact. 3. Any intending purchaser or lessee must satisfy themselves by inspection or otherwise as to the correctness of each of the statements contained in these particulars. 4. The vendor(s) or lessor(s) do not make or give and neither Tavistock Bow Ltd nor any person in their employment has any authority to make or give any representation or warranty whatever in relation to this property. Finance Act 1989, Unless otherwise stated all prices and rents are quote exclusive of VAT. Property Misrepresentation Act 1991; These details are believed to be correct at the time of compilation but may be subject to subsequent amendment.

Follow us:     @tavistockbow

Score	Energy rating	Current	Potential
92+	A		
81-91	B		88 B
69-80	C		
55-68	D	61 D	
39-54	E		
21-38	F		
1-20	G		

## Russell Street, WC2

Approximate Gross Internal Area 46 sq m / 495 sq ft



### Second Floor

Floor Plan produced for Tavistock Bow by Mays Floorplans © . Tel 020 3397 4594  
Illustration for identification purposes only, not to scale  
All measurements are maximum, and include wardrobes and window bays where applicable

**tavistockbow**

21 New Row, Covent Garden,  
London, WC2N 4LE

t: 020 7477 2177  
e: [hello@tavistockbow.com](mailto:hello@tavistockbow.com)  
w: [tavistockbow.com](http://tavistockbow.com)



**Russell Street, Covent Garden WC2**