

tavistockbow

For Rent



People Make Places



Rupert Street, Chinatown W1

2 bedrooms | 1,249 sq ft

£1,100 pw





A rarely available two bedroom maisonette set over three floors in the heart of Chinatown that has a feel of a house spanning over 1,200 sq ft and finished to an exceptional specification. Brimming with character and with a modern finish throughout. Available immediately unfurnished.

What you need to know

- Two bedrooms
- Two bathrooms
- Two reception rooms
- Set over three floors
- Stunning bathrooms
- Unfurnished
- Oak wood floors
- Secondary glazed
- Available immediately
- Close to Piccadilly Circus tube station



Rupert Street, Chinatown W1



Overview

Spread over three floors and with ample living space, this two bedroom maisonette in the heart of Chinatown offers flexible accommodation. A large modern kitchen is on the first floor leading onto a spacious dining area complete with high ceilings, feature fireplace and sash windows. The second floor houses a luxurious bathroom with freestanding roll top bath and separate shower, while a reception room shares the same floor that could also be utilised as a home office. Two double bedrooms with fitted storage and a shower room are on the third floor, all finished in a contemporary style. Secondary glazing is fitted for tenant comfort.



Rupert Street is ideally located close to Piccadilly Circus (Piccadilly and Bakerloo Lines) and a short walk away from both Oxford Circus (Central, Bakerloo and Victoria Lines) and Leicester Square (Northern and Piccadilly Lines) Underground Stations. Several Central London neighbourhoods like Soho, Covent Garden, Mayfair, St James's, Fitzrovia and Bloomsbury are all within walking distance and numerous bus routes run along nearby Shaftesbury Avenue.

The apartment is available immediately on an unfurnished basis. Subject to contract and satisfactory references, the landlord offers a three-year lease with a mutual rolling six-month break clause. Westminster Council tax band: G.



Rupert Street, Chinatown W1

People Make Places

London is a collection of inspiring urban villages and one of the most exciting places in the world to live, work & play.

We work with both property owners and their occupiers, sharing the story of these vibrant neighbourhoods, conveying the unique soul & energy to future custodians, the people who'll keep them buzzing.

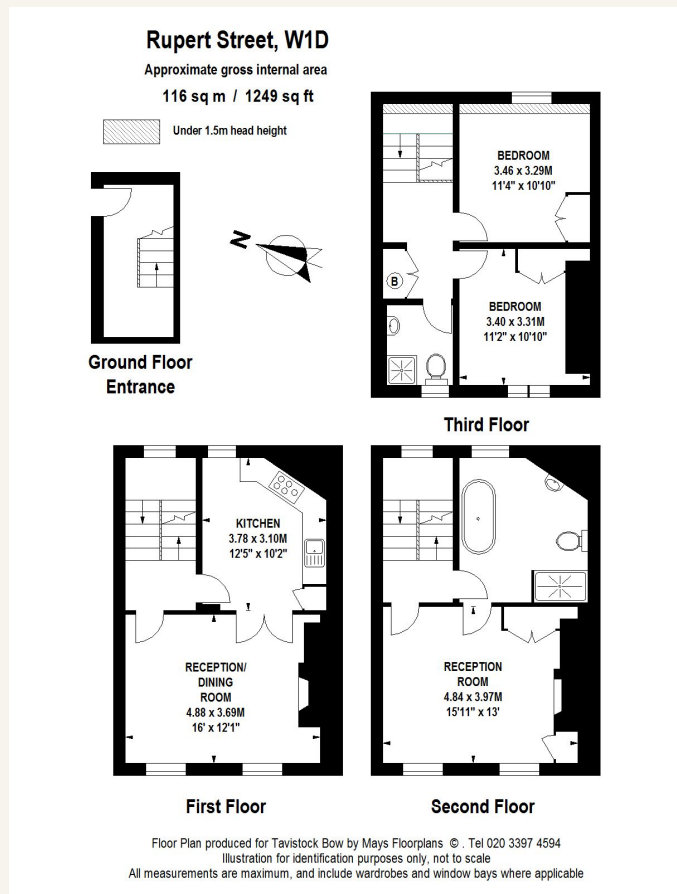
And unlike many real estate businesses we're not just about buildings, because streets & buildings don't make a neighbourhood.

We're about building relationships, because **people make places**.

MISINTERPRETATION ACT (COPYRIGHT) DISCLAIMER: Tavistock Bow Ltd for themselves and for the vendor(s) of this property whose agents they are, given notice that: 1. These particulars do not constitute, not constitute any part of, an offer or contract. 2. None of the statements contained in these particulars as to the property are to be relied on as statements or representations of fact. 3. Any intending purchaser or lessee must satisfy themselves by inspection or otherwise as to the correctness of each of the statements contained in these particulars. 4. The vendor(s) or lessor(s) do not make or give and neither Tavistock Bow Ltd nor any person in their employment has any authority to make or give any representation or warranty whatever in relation to this property. Finance Act 1989, Unless otherwise stated all prices and rents are quote exclusive of VAT. Property Misrepresentation Act 1991; These details are believed to be correct at the time of compilation but may be subject to subsequent amendment.

Follow us:     @tavistockbow

Score	Energy rating	Current	Potential
92+	A		
81-91	B		
69-80	C	73 C	80 C
55-68	D		
39-54	E		
21-38	F		
1-20	G		



tavistockbow

21 New Row, Covent Garden,
London, WC2N 4LE

t: 020 7477 2177
e: hello@tavistockbow.com
w: tavistockbow.com



Rupert Street, Chinatown W1