

*tavistockbow*

**For Rent**



## People Make Places



**Montague Street, Bloomsbury WC1**

0 bedrooms | 484 sq ft

£450 pw





A well-proportioned studio apartment moments from the British Museum in Bloomsbury. Positioned on the lower ground floor of a charming Georgian townhouse, the studio has a separate galley kitchen, white suite bathroom and useful storage in the hallway. Available from mid June unfurnished.

#### What you need to know

- Studio apartment
- Lower ground floor
- Separate kitchen
- Bathroom
- Recently refurbished
- Unfurnished
- Great size studio room
- Moments from Russell Square
- Available mid June
- Close to Holborn and Russell Square tube stations



**Montague Street, Bloomsbury WC1**



### Overview

Centrally located in Bloomsbury and a short walk from the Russell Square and the Brunswick Centre, this studio apartment would make for a great pied-à-terre or someone wanting a Central London home. Forming part of a grand Georgian building that the area is famed for, the studio apartment is on the lower ground floor and is neutrally decorated with wooden floors and white walls. White units feature in the galley kitchen, which is separate from the studio space, while square white tiles with grey grouting in the bathroom create a modern look.



Montague Street is a residential street moments from the British Museum. While much of Central London is easily accessible on foot including Covent Garden, Fitzrovia, Holborn and Soho, underground services can be reached by Russell Square (Piccadilly Line) and Holborn (Piccadilly and Central Lines) for travel within London including They City. Buses can be reached via New Oxford Street, while King's Cross is approximately a 15-minute walk.

The apartment is available in June on an unfurnished basis. Subject to contract and satisfactory references, the landlord offers a one lease with a mutual rolling six-month break clause. Camden Council tax band: C.



**Montague Street, Bloomsbury WC1**



# People Make Places

London is a collection of inspiring urban villages and one of the most exciting places in the world to live, work & play.

We work with both property owners and their occupiers, sharing the story of these vibrant neighbourhoods, conveying the unique soul & energy to future custodians, the people who'll keep them buzzing.

And unlike many real estate businesses we're not just about buildings, because streets & buildings don't make a neighbourhood.

We're about building relationships, because **people make places**.

MISINTERPRETATION ACT (COPYRIGHT) DISCLAIMER: Tavistock Bow Ltd for themselves and for the vendor(s) of this property whose agents they are, given notice that: 1. These particulars do not constitute, not constitute any part of, an offer or contract. 2. None of the statements contained in these particulars as to the property are to be relied on as statements or representations of fact. 3. Any intending purchaser or lessee must satisfy themselves by inspection or otherwise as to the correctness of each of the statements contained in these particulars. 4. The vendor(s) or lessor(s) do not make or give and neither Tavistock Bow Ltd nor any person in their employment has any authority to make or give any representation or warranty whatever in relation to this property. Finance Act 1989, Unless otherwise stated all prices and rents are quote exclusive of VAT. Property Misrepresentation Act 1991; These details are believed to be correct at the time of compilation but may be subject to subsequent amendment.

Follow us:     @tavistockbow

Score	Energy rating	Current	Potential
92+	A		
81-91	B		
69-80	C		77 C
55-68	D	58 D	
39-54	E		
21-38	F		
1-20	G		

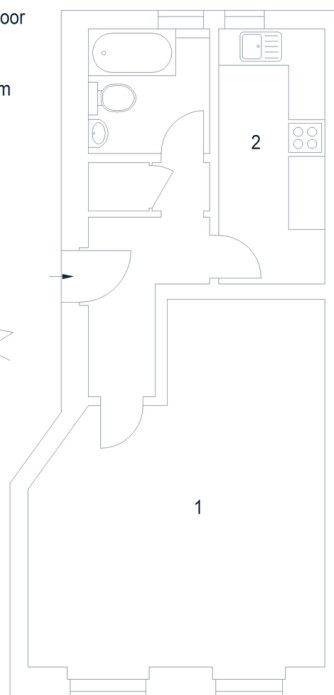
## Montague Street, WC1B

Approximate Gross Internal Area 45 sq m / 484 sq ft

### Lower Ground Floor

1 Reception Room  
6.24 x 4.89M  
20'6" x 16'1"

2 Kitchen  
4.19 x 1.75M  
13'9" x 5'9"



Floor Plan produced for Tavistock Bow by Mays Floorplans © . Tel 020 3397 4594  
Illustration for identification purposes only, not to scale.

## tavistockbow

21 New Row, Covent Garden,  
London, WC2N 4LE

t: 020 7477 2177  
e: [hello@tavistockbow.com](mailto:hello@tavistockbow.com)  
w: [tavistockbow.com](http://tavistockbow.com)



## Montague Street, Bloomsbury WC1