

tavistockbow

For Rent



People Make Places



Shaftesbury Avenue, Chinatown W1

2 bedrooms | 807 sq ft

£825 pw





Ideal for two sharers, this two double bedroom apartment is positioned on the second floor, walk-up, of a grand period mansion block on Shaftesbury Avenue. Contemporary throughout, there are wooden floors, plentiful storage & a bright open plan kitchen/reception room. Available June unfurnished.

What you need to know

- Two bedrooms
- One bathroom
- Second floor (walk up)
- Wooden floors throughout
- Open plan plan kitchen kitchen/reception room
- Unfurnished
- Central West End location
- Recently redecorated
- Short walk to Leicester Square station
- Available October



Shaftesbury Avenue, Chinatown W1



Overview

Flooded with natural light and generously proportioned, this two-bedroom apartment is positioned on Shaftesbury Avenue in Chinatown and just across from the vibrancy of Soho. Both bedrooms are fitted with useful storage while an arch in the large reception room creates a natural divide between the living area and the modern open-plan kitchen, which has plenty of space for dining. Original feature fireplaces give the apartment character, while the oak wooden floors and stylish bathroom create a contemporary feel. Secondary glazing is fitted throughout for tenant comfort.



Several Central London neighbourhoods like Soho, Covent Garden, Mayfair, St James's, Fitzrovia and Bloomsbury are all within walking distance of Shaftesbury Avenue. Numerous bus routes run along Shaftesbury Avenue itself, while Tottenham Court Road (Central, Northern and Queen Elizabeth lines) and Piccadilly (Piccadilly and Bakerloo lines) Underground Stations are also a short walk away.

The apartment is available in June on an unfurnished basis. Subject to contract and satisfactory references, the landlord offers a three-year lease with a mutual rolling six-month break clause. Westminster Council tax band: G.



Shaftesbury Avenue, Chinatown W1

People Make Places


London is a collection of inspiring urban villages and one of the most exciting places in the world to live, work & play.

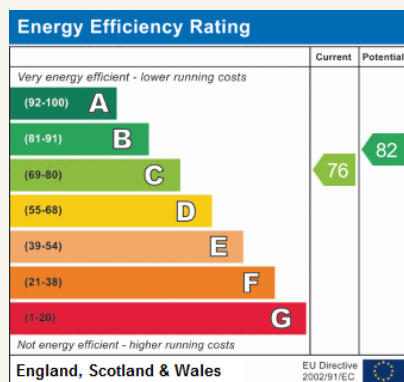
We work with both property owners and their occupiers, sharing the story of these vibrant neighbourhoods, conveying the unique soul & energy to future custodians, the people who'll keep them buzzing.

And unlike many real estate businesses we're not just about buildings, because streets & buildings don't make a neighbourhood.

We're about building relationships, because **people make places**.

MISINTERPRETATION ACT (COPYRIGHT) DISCLAIMER: Tavistock Bow Ltd for themselves and for the vendor(s) of this property whose agents they are, given notice that: 1. These particulars do not constitute, not constitute any part of, an offer or contract. 2. None of the statements contained in these particulars as to the property are to be relied on as statements or representations of fact. 3. Any intending purchaser or lessee must satisfy themselves by inspection or otherwise as to the correctness of each of the statements contained in these particulars. 4. The vendor(s) or lessor(s) do not make or give and neither Tavistock Bow Ltd nor any person in their employment has any authority to make or give any representation or warranty whatever in relation to this property. Finance Act 1989, Unless otherwise stated all prices and rents are quote exclusive of VAT. Property Misrepresentation Act 1991; These details are believed to be correct at the time of compilation but may be subject to subsequent amendment.

Follow us:     @tavistockbow



Cooper House, W1

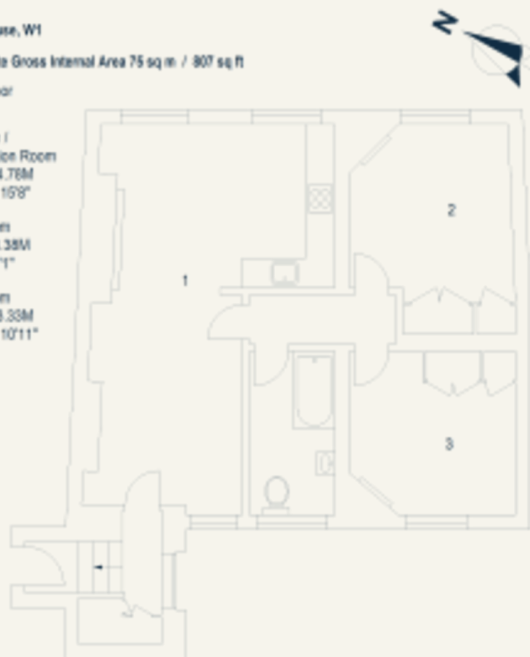
Approximate Gross Internal Area 75 sq m / 807 sq ft

Second Floor

1 Kitchen /
Reception Room
7.82 x 4.78M
25'8" x 15'8"

2 Bedroom
3.67 x 3.38M
12' x 11'1"

3 Bedroom
3.38 x 3.38M
11'1" x 10'11"



Floor Plan produced for Tavistock Bow by Mean Properties ©. Tel 020-6967 4704
Illustration for identification purposes only, not to scale.

tavistockbow

21 New Row, Covent Garden,
London, WC2N 4LE

t: 020 7477 2177
e: hello@tavistockbow.com
w: tavistockbow.com



Shaftesbury Avenue, Chinatown W1