

tavistockbow

For Rent



People Make Places



The Little Adelphi, Strand WC2

2 bedrooms | 1,098 sq ft

£850 pw





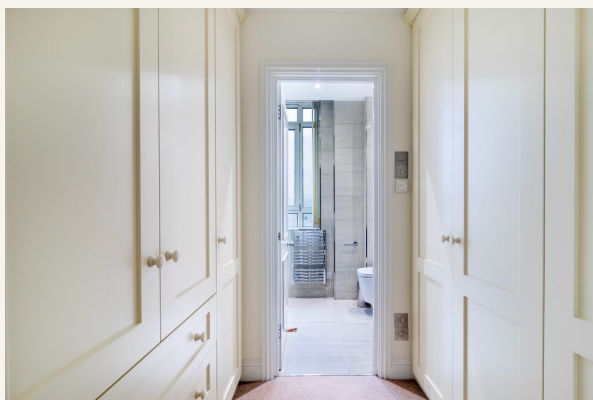
A bright and well proportioned two bedroom lateral apartment with a study overlooking the well-tended courtyard garden of The Little Adelphi, this ever-popular and sought after portered block. NB There is no HMO licence so 2 sharers maximum allowed. Available immediately.

What you need to know

- Lateral apartment
- Two bedrooms
- Study
- Modern block
- 24-hour concierge
- Well-proportioned accommodation
- Sought-after building
- Quiet yet central location
- Available immediately
- Close to Charing Cross & Embankment stations



The Little Adelphi, Strand WC2



Overview

Featuring two bedrooms, two bathrooms and a study, this apartment is in a highly prized building with 24 hour porter positioned in a quiet, secluded location nestled between the Strand and the River Thames. The apartment is immaculately presented, and its spacious reception room's corner position offers courtyard garden views from the spacious reception room. A separate kitchen lies off the hallway while there are several storage options found throughout. Due to HMO licensing laws, this apartment is suited to two sharers only.



Located between the Strand and Embankment Gardens within easy reach of both Covent Garden and the River Thames. Nearby Charing Cross (Bakerloo and Northern Lines) offers underground services and overground services to London Bridge and beyond. The beautiful and serene Embankment Gardens are literally moments away, along with Embankment Station (Bakerloo, Circle, District and Northern Lines). Several bus routes operate on the Strand and riverboat services to the City and Canary Wharf can be joined from nearby Embankment Pier.

The apartment is available immediately on a furnished basis. Subject to contract and satisfactory references, the landlord offers a 12 month lease with a mutual rolling six-month break clause. Westminster Council tax band: G.



The Little Adelphi, Strand WC2

People Make Places

London is a collection of inspiring urban villages and one of the most exciting places in the world to live, work & play.

We work with both property owners and their occupiers, sharing the story of these vibrant neighbourhoods, conveying the unique soul & energy to future custodians, the people who'll keep them buzzing.

And unlike many real estate businesses we're not just about buildings, because streets & buildings don't make a neighbourhood.

We're about building relationships, because **people make places**.

MISINTERPRETATION ACT (COPYRIGHT) DISCLAIMER: Tavistock Bow Ltd for themselves and for the vendor(s) of this property whose agents they are, given notice that: 1. These particulars do not constitute, nor constitute any part of, an offer or contract. 2. None of the statements contained in these particulars as to the property are to be relied on as statements or representations of fact. 3. Any intending purchaser or lessee must satisfy themselves by inspection or otherwise as to the correctness of each of the statements contained in these particulars. 4. The vendor(s) or lessor(s) do not make or give and neither Tavistock Bow Ltd nor any person in their employment has any authority to make or give any representation or warranty whatever in relation to this property. Finance Act 1989, Unless otherwise stated all prices and rents are quote exclusive of VAT. Property Misrepresentation Act 1991; These details are believed to be correct at the time of compilation but may be subject to subsequent amendment.

Follow us: [x](#) [f](#) [@](#) [in](#) @tavistockbow

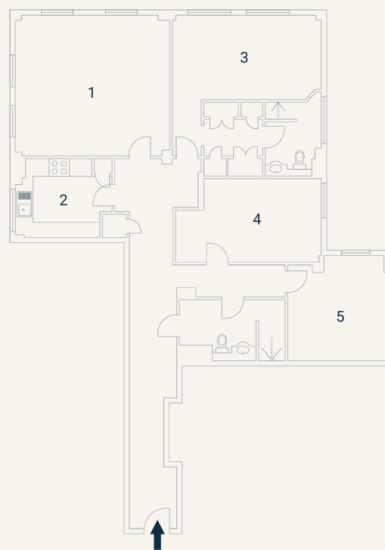
Score	Energy rating	Current	Potential
92+	A		
81-91	B		
69-80	C	69 C	76 C
55-68	D		
39-54	E		
21-38	F		
1-20	G		

Little Adelphi, WC2

Approximate Gross Internal Area 96 sq m / 1033 sq ft

Lower Ground Floor

1 Living / Dining 4.80 x 4.38M 15'7" x 14'3"	2 Kitchen 3.05 x 2.48M 10'0" x 8'1"	3 Bedroom 4.46 x 4.40M 14'6" x 14'4"	4 Bedroom 4.21 x 2.74M 13'8" x 8'9"	5 Bedroom 3.14 x 3.13M 10'3" x 10'2"
--	---	--	---	--



Floorplan produced for Tavistock Bow. Illustration for identification purposes only and not to scale. All measurements are approximate and not to be relied upon.

tavistockbow

21 New Row, Covent Garden,
London, WC2N 4LE

t: 020 7477 2177
e: hello@tavistockbow.com
w: tavistockbow.com



The Little Adelphi, Strand WC2